

H2TCM2-43X+



10-4000 MHz

50Ω 1:2 Transmission Line Transformer

Features

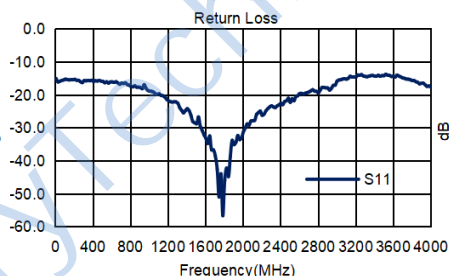
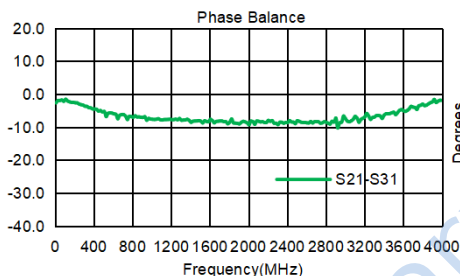
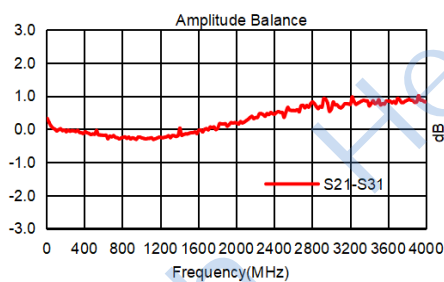
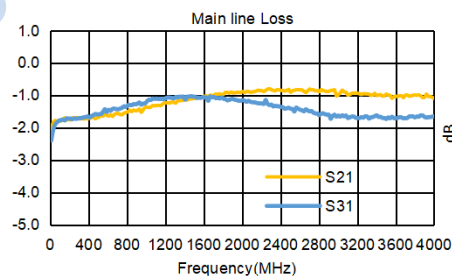
- RF Power, 0.4W
- DC Current, 30mA
- Operating temperature range: -40°C to +85°C
- Storage temperature range: -55°C to +100°C
- 260°C Reflow Compatible
- RoHS compliant and lead free

Applications

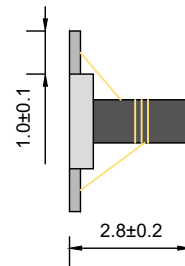
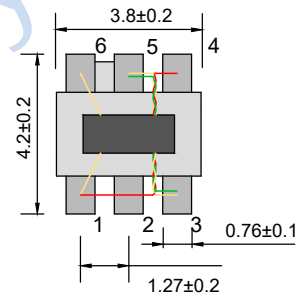
- Impedance matching
- Balanced amplifier
- Balun
- Cellular and VHF

Electrical Specifications: TA=25°C, 0dBm, Z0=50Ω

Parameter	Test Conditions	Units	Min	Typ	Max
Main line Loss (Pin4-3)	10-4000MHz	dB	—	1.2	2.5
Main line Loss (Pin4-1)	10-4000MHz	dB	—	1.5	2.5
Amplitude Balance	10-4000MHz	dB	0.0	1.0	2.0
Phase Balance	10-4000MHz	°	0.0	8.0	15.0
Input Return Loss(Pin4)	10-4000MHz	dB	12.0	16.0	—

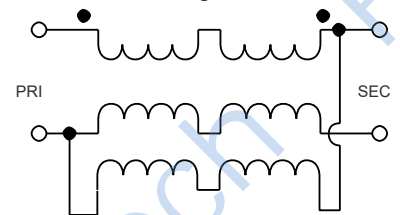


Outline Drawing(mm)

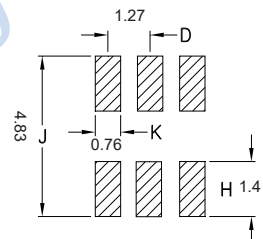


Electrical structure

Fig G



Recommended layout(mm)



Pin Connections

Input	4
Output 1	3
Output 2	1
Ground	5,6
Not Used	2