

## BAT42W-BAT43W

www.china-base.com.hk

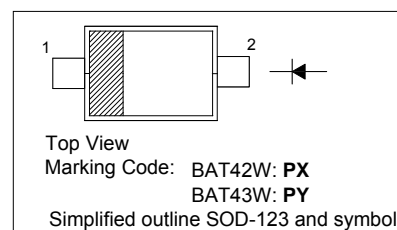
### SURFACE MOUNT SCHOTTKY BARRIER DIODE

#### Features

- Low Forward Voltage Drop
- Fast Switching

#### PINNING

PIN	DESCRIPTION
1	Cathode
2	Anode

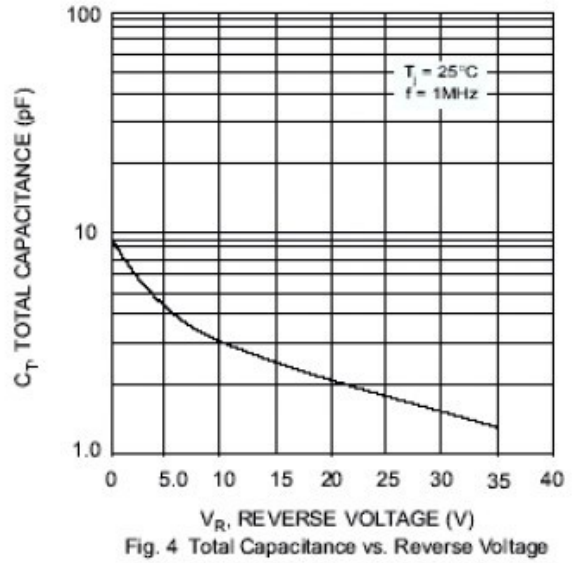
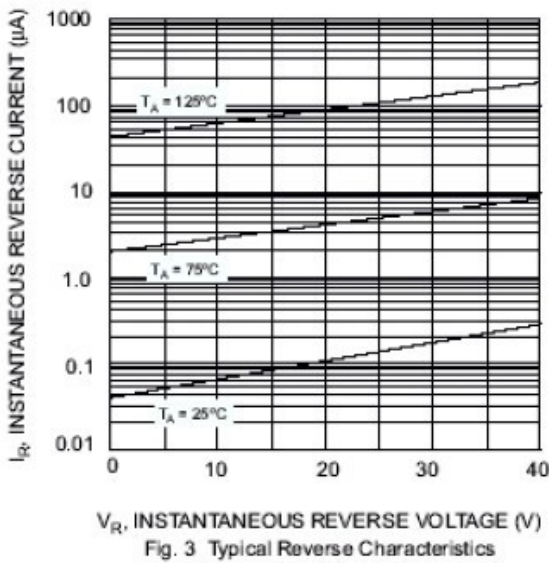
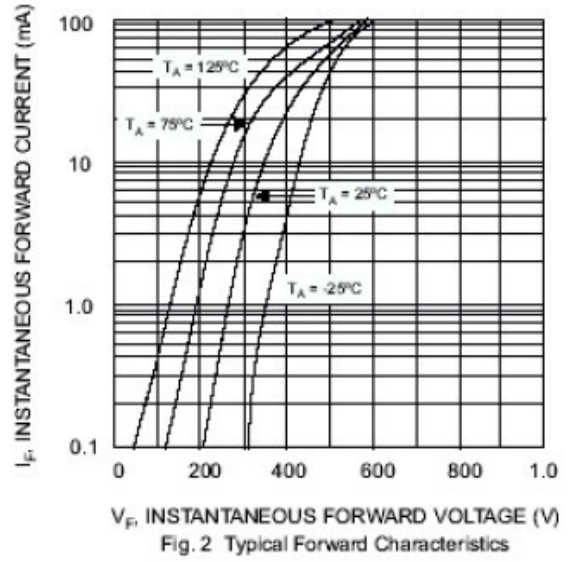
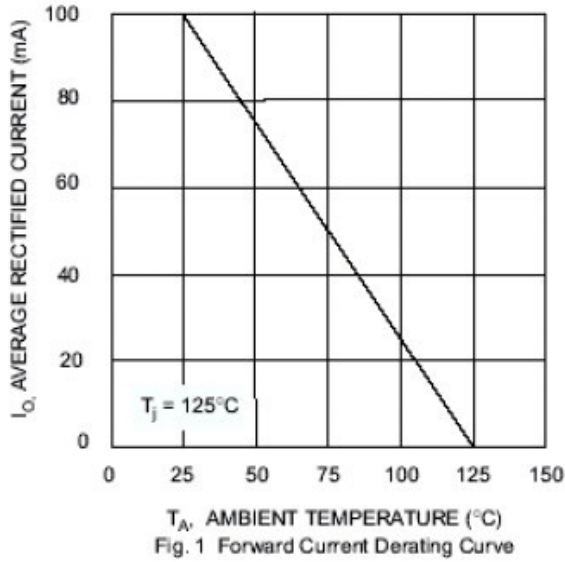


#### Absolute Maximum Ratings ( $T_a = 25\text{ }^\circ\text{C}$ )

Parameter	Symbol	Value	Unit
Repetitive Peak Reverse Voltage	$V_{RRM}$	30	V
Reverse Voltage	$V_R$	30	V
Forward Continuous Current	$I_{FM}$	200	mA
Repetitive Peak Forward Current at $t < 1\text{ s}$	$I_{FRM}$	500	mA
Non-repetitive Peak Forward Surge Current at $t < 10\text{ ms}$	$I_{FSM}$	2	A
Power Dissipation	$P_{tot}$	200	mW
Thermal Resistance Junction to Ambient	$R_{\theta JA}$	500	$^\circ\text{C/W}$
Operating and Storage Temperature Range	$T_J, T_{Stg}$	- 55 to + 125	$^\circ\text{C}$

#### Characteristics at $T_a = 25\text{ }^\circ\text{C}$

Parameter	Symbol	Min.	Max.	Unit
Reverse Breakdown Voltage at $I_R = 100\text{ }\mu\text{A}$	$V_{(BR)R}$	30	-	V
Reverse Current at $V_R = 25\text{ V}$	$I_R$	-	500	nA
Forward Voltage at $I_F = 200\text{ mA}$	$V_F$	-	1	V
at $I_F = 10\text{ mA}$		-	0.4	V
at $I_F = 50\text{ mA}$		-	0.65	V
at $I_F = 2\text{ mA}$		0.26	0.33	V
at $I_F = 15\text{ mA}$		-	0.45	V
Total Capacitance at $V_R = 1\text{ V}, f = 1\text{ MHz}$	$C_T$	-	10	pF
Reverse Recovery Time at $I_F = I_R = 10\text{ mA}, I_{rr} = 0.1 \times I_R, R_L = 100\text{ }\Omega$	$t_{rr}$	-	5	ns

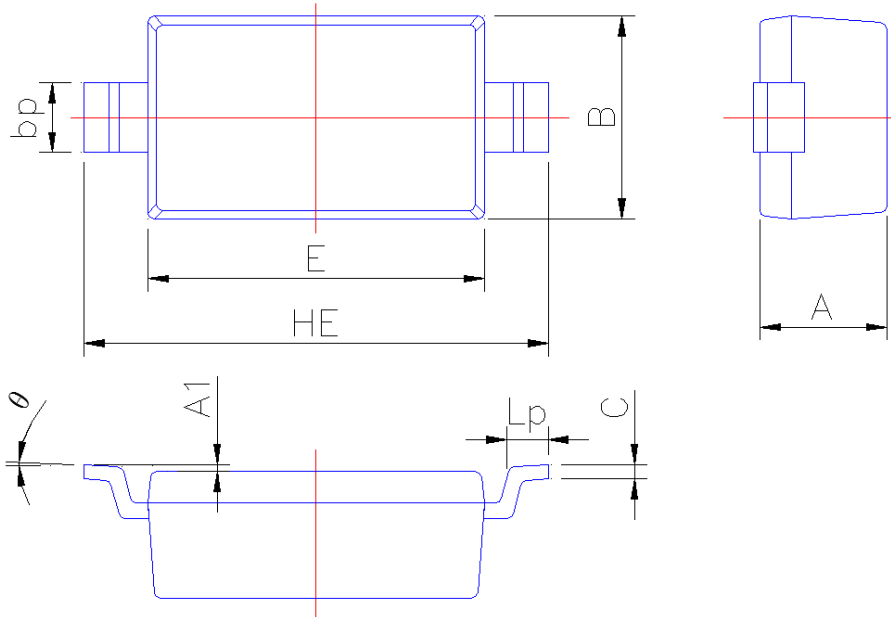




## PACKAGE OUTLINE

Plastic surface mounted package; 2 leads

SOD-123



Symbol	Dimension in Millimeters	
	Min	Max
A	0.95	1.15
A1	0.01	0.100
B	1.55	1.65
bp	0.50	0.70
C	0.09	0.150
E	2.60	2.70
HE	3.45	3.85
Lp	0.20	0.45
θ	0°	5°