

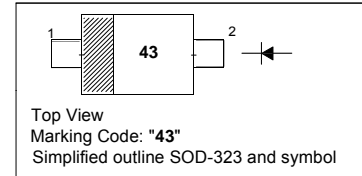
SURFACE MOUNT SCHOTTKY BARRIER DIODE

Features

- Low forward voltage
- Fast switching

PINNING

PIN	DESCRIPTION
1	Cathode
2	Anode



Absolute Maximum Ratings ($T_a = 25\text{ }^\circ\text{C}$)

Parameter	Symbol	Value	Unit
Repetitive Peak Reverse Voltage	V_{RRM}	40	V
DC Blocking Voltage	V_R	40	V
Forward Continuous Current	I_F	200	mA
Peak Forward Surge Current (at $t_p = 8.3\text{ ms}$)	I_{FSM}	600	mA
Junction Temperature	T_J	150	$^\circ\text{C}$
Storage Temperature Range	T_{Stg}	- 55 to + 150	$^\circ\text{C}$

Characteristics at $T_a = 25\text{ }^\circ\text{C}$

Parameter	Symbol	Min.	Max.	Unit
Forward Voltage at $I_F = 1\text{ mA}$ at $I_F = 40\text{ mA}$	V_F V_F	- -	0.38 1	V V
Reverse Current at $V_R = 30\text{ V}$	I_R	-	200	nA
Reverse Breakdown Voltage at $I_R = 10\text{ }\mu\text{A}$	$V_{(BR)R}$	40	-	V
Reverse Recovery Time at $I_F = I_R = 10\text{ mA}$ to $I_R = 1\text{ mA}$, $R_L = 100\text{ }\Omega$	t_{rr}	-	5	ns
Capacitance at $V_R = 0\text{ V}$, $f = 1\text{ MHz}$	C_j	-	5	pF

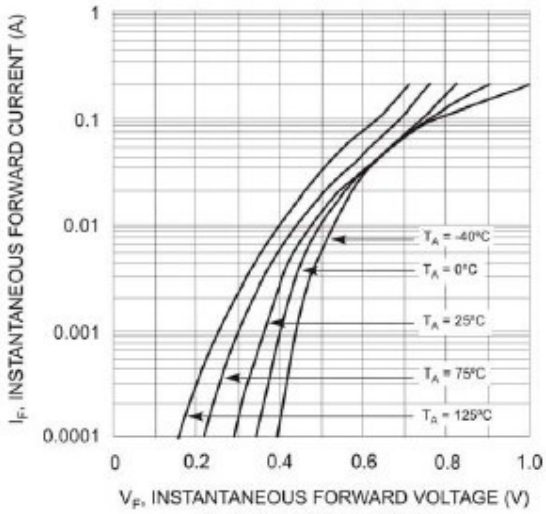


Fig. 1 Typical Forward Voltage

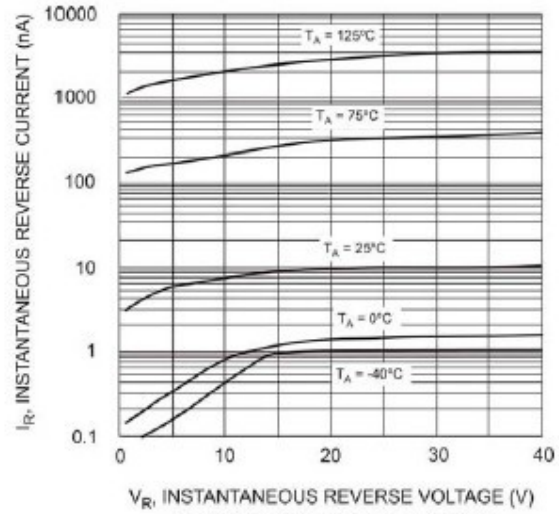


Fig. 2 Typical Reverse Characteristics

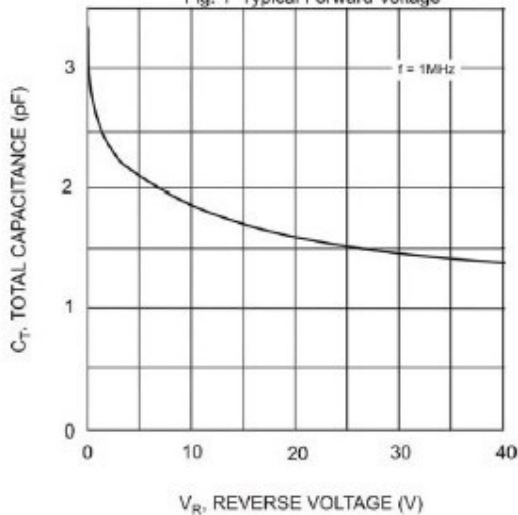


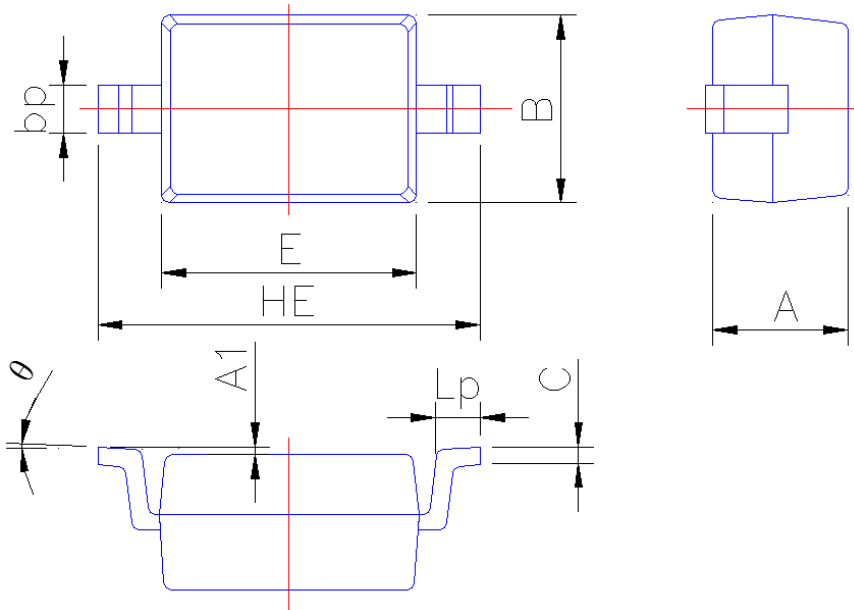
Fig. 3 Typical Capacitance



PACKAGE OUTLINE

Plastic surface mounted package; 2 leads

SOD-323



Symbol	Dimension in Millimeters	
	Min	Max
A	0.95	1.15
A1	0.010	0.100
B	1.20	1.40
bp	0.25	0.40
C	0.09	0.150
E	1.60	1.80
HE	2.30	2.70
Lp	0.20	0.40
θ	0°	5°