

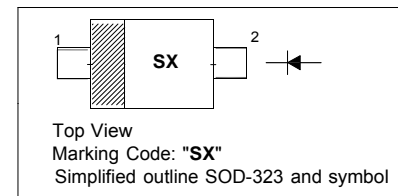
SMALL SIGNAL SCHOTTKY DIODE

Features

- Low forward voltage drop

PINNING

| PIN | DESCRIPTION |
|-----|-------------|
| 1 | Cathode |
| 2 | Anode |



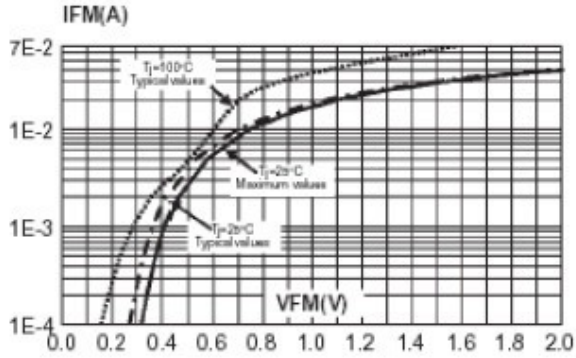
Absolute Maximum Ratings ($T_a = 25\text{ }^\circ\text{C}$)

| Parameter | Symbol | Value | Unit |
|---|------------|---------------|--------------------|
| Repetitive Peak Reverse Voltage | V_{RRM} | 70 | V |
| Continuous Forward Current | I_F | 70 | mA |
| Surge Non-Repetitive Forward Current ($t_p = 10\text{ ms}$) | I_{FSM} | 1 | A |
| Total Power Dissipation | P_{tot} | 230 | mW |
| Thermal Resistance Junction to Ambient ¹⁾ | R_{thJA} | 550 | $^\circ\text{C/W}$ |
| Junction Temperature | T_J | 150 | $^\circ\text{C}$ |
| Storage Temperature Range | T_{stg} | - 65 to + 150 | $^\circ\text{C}$ |

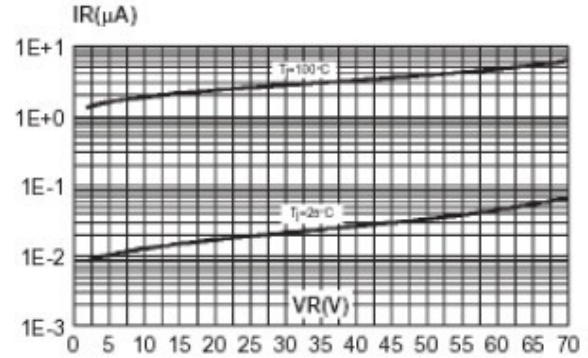
¹⁾ Mounted on epoxy board, with recommended pad layout.

Characteristics at $T_a = 25\text{ }^\circ\text{C}$

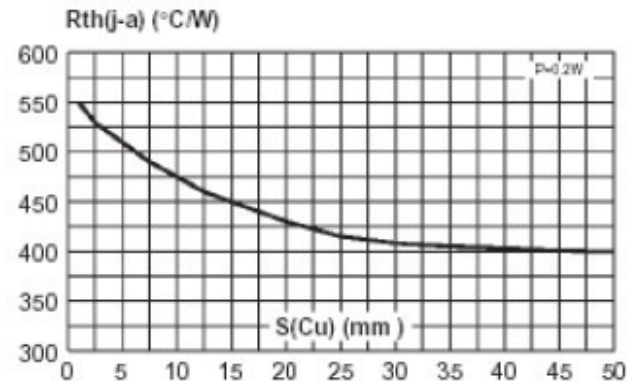
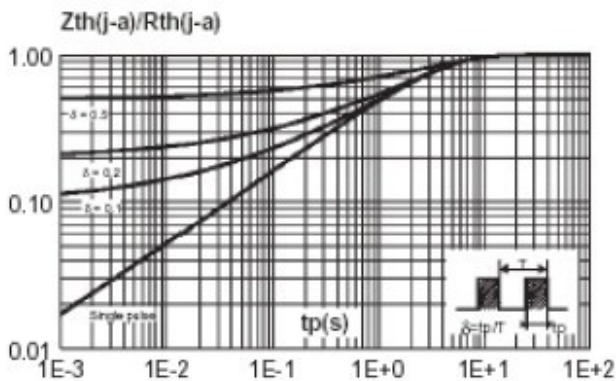
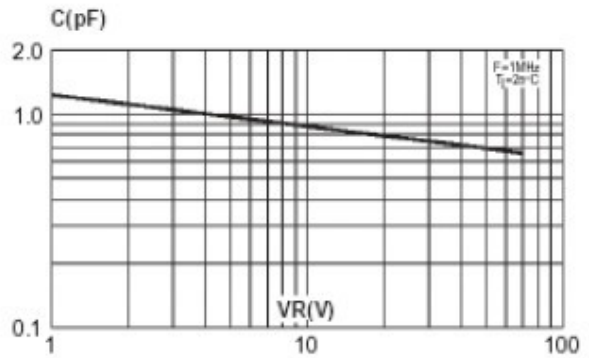
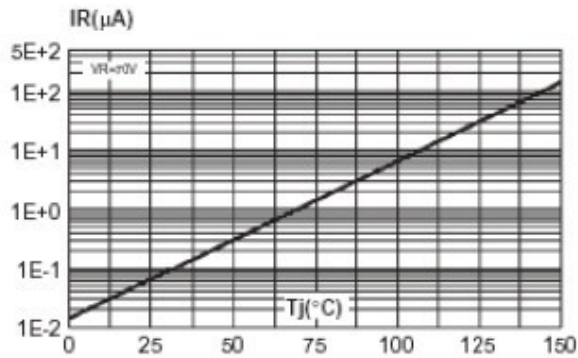
| Parameter | Symbol | Min. | Max. | Unit |
|---|-----------|------|------|------|
| Reverse Breakdown Voltage at $I_R = 10\text{ }\mu\text{A}$ | V_{BR} | 70 | - | V |
| Forward Voltage at $I_F = 1\text{ mA}$ | V_F | - | 410 | mV |
| Reverse Current at $V_R = 50\text{ V}$ | I_R | - | 100 | nA |
| Diode Capacitance at $V_R = 0\text{ V}$, $f = 1\text{ MHz}$ | C_{tot} | - | 2 | pF |



Reverse leakage current versus junction temperature (typical values).



Junction capacitance versus reverse voltage applied (typical values).

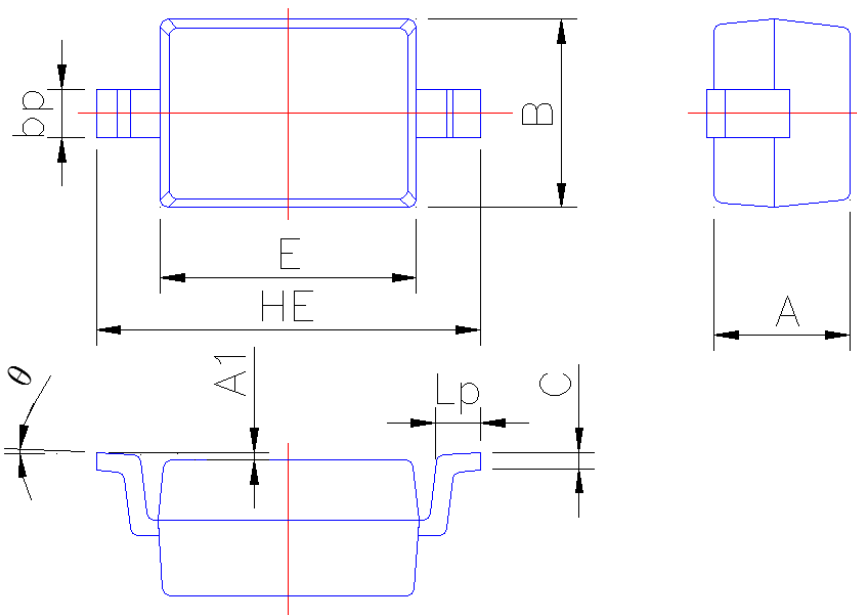




PACKAGE OUTLINE

Plastic surface mounted package; 2 leads

SOD-323



| Symbol | Dimension in Millimeters | |
|----------|--------------------------|-------|
| | Min | Max |
| A | 0.95 | 1.15 |
| A1 | 0.010 | 0.100 |
| B | 1.20 | 1.40 |
| bp | 0.25 | 0.40 |
| C | 0.09 | 0.150 |
| E | 1.60 | 1.80 |
| HE | 2.30 | 2.70 |
| Lp | 0.20 | 0.40 |
| θ | 0° | 5° |