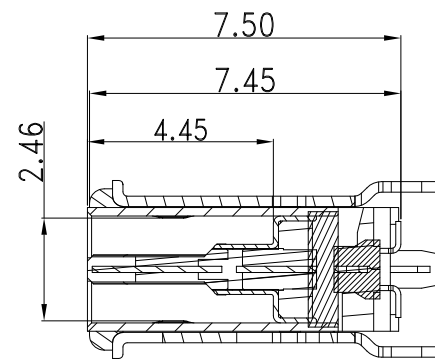
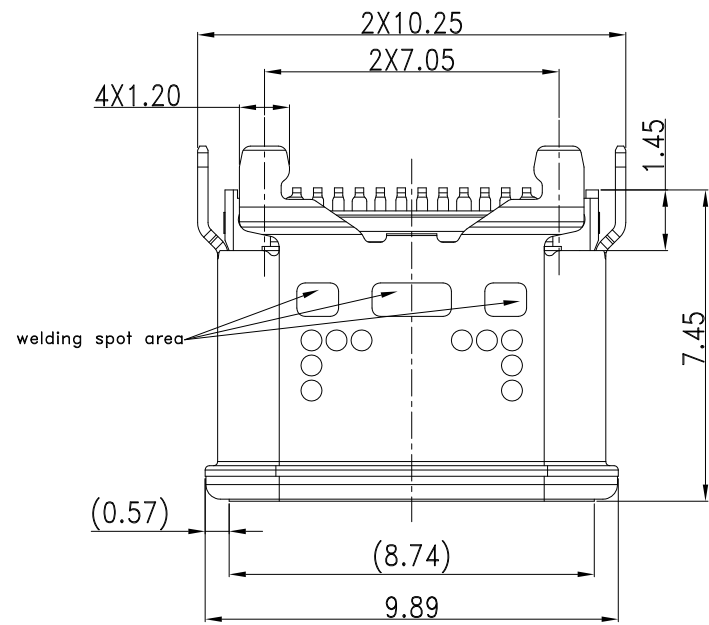


This document is the property of Amphenol Corporation and is delivered on the express condition that it is not to be disclosed, reproduced or used, in whole or in part, for manufacture or sale by anyone other than Amphenol Corporation without its prior consent, & that no right is granted to disclose or to use any information in this document.

CUSTOMER DRAWING

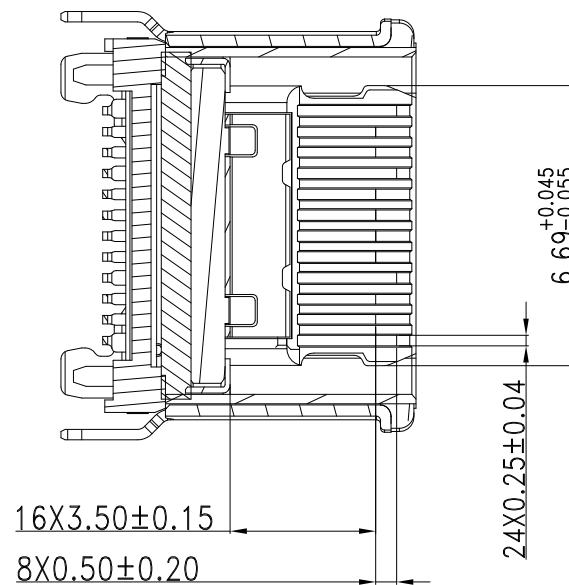
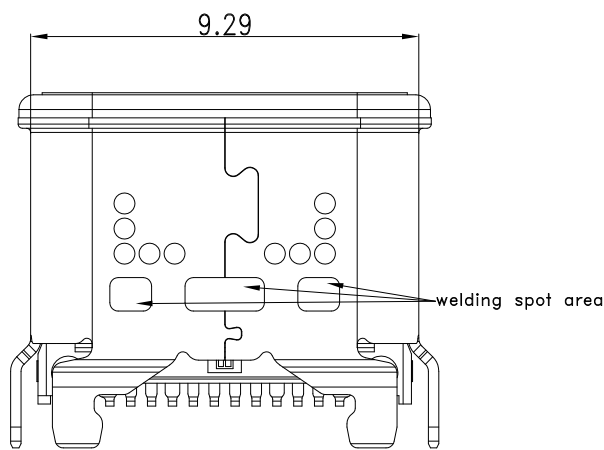
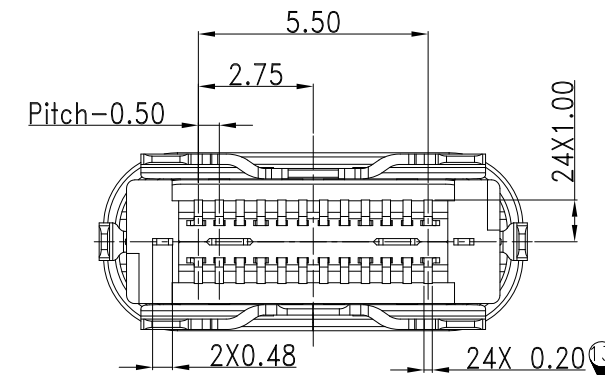
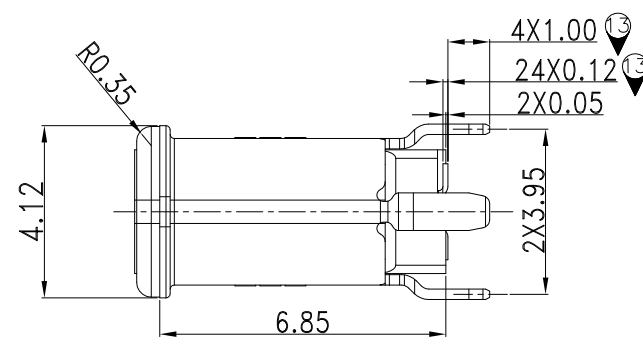
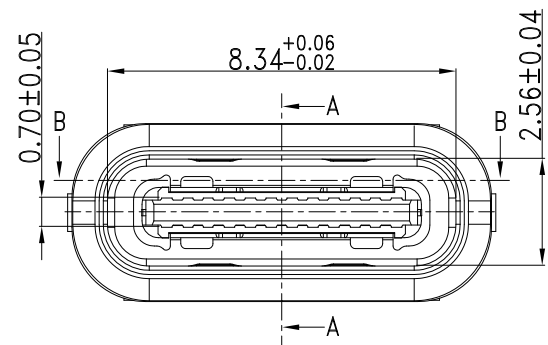
| REVISIONS | | | | |
|-----------|--------|-------------------------------|------------|-------------|
| SYM | ECN | DESCRIPTION | DATE | APPROVED |
| 11 | HKXXXX | Add plating P/N | 07/06/2022 | Michael.qin |
| 12 | HKXXXX | Update panel Recommended size | 12/26/2022 | Michael.qin |
| 13 | HKXXXX | Add size | 04/19/2023 | Michael.qin |



SECTION A-A(剖视图A-A)
SCALE 1:1 (比例 1:1)



| Pin No | Signal Name | Mating Sequence | Pin No | Signal Name | Mating Sequence |
|--------|-------------|-----------------|--------|-------------|-----------------|
| A1 | GND | First | B12 | GND | First |
| A2 | TX1+ | Second | B11 | RX1+ | Second |
| A3 | TX1- | Second | B10 | RX1- | Second |
| A4 | Vbus | First | B9 | Vbus | First |
| A5 | CC1 | Second | B8 | SBU2 | Second |
| A6 | D+ | Second | B7 | D- | Second |
| A7 | D- | Second | B6 | D+ | Second |
| A8 | SBU1 | Second | B5 | CC2 | Second |
| A9 | Vbus | First | B4 | Vbus | First |
| A10 | RX2- | Second | B3 | TX2- | Second |
| A11 | RX2+ | Second | B2 | TX2+ | Second |
| A12 | GND | First | B1 | GND | First |
| SHELL | GND | | SHELL | GND | |



| | |
|------------|---|
| HF(无卤) | √ |
| Non-HF(有卤) | |

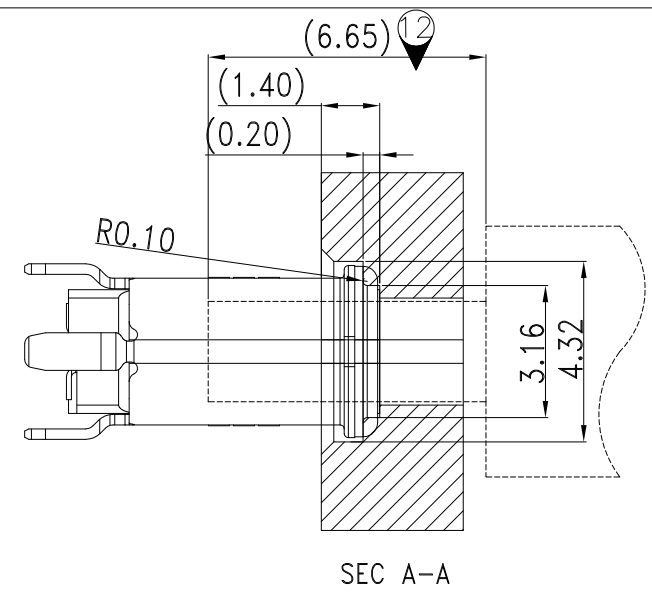
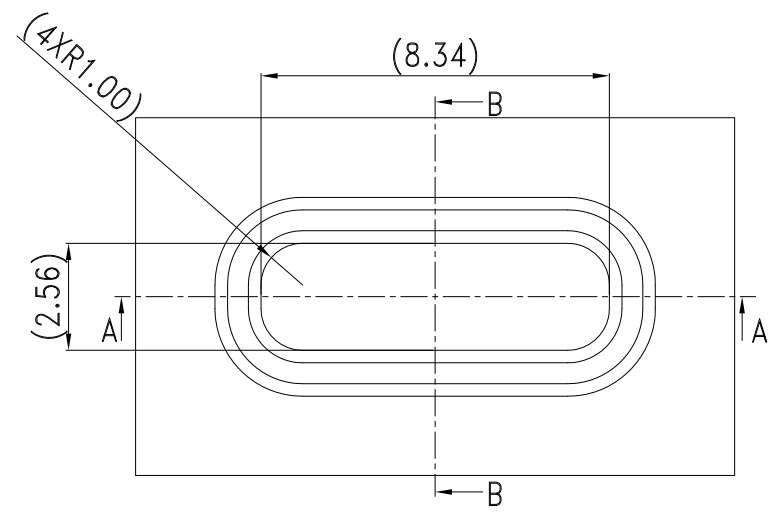
| | | | |
|--|---|------------------------------|---|
| UNLESS OTHERWISE SPECIFIED TOLERANCES U.S. METRIC .X +/- 0.50 .XX +/- 0.25 .XXX +/- 0.10 FRACTIONS +/- ANGLES +/- 3° FOR MATERIALS AND FINISHES SEE NOTES REMOVE SHARP EDGES DIMENSIONS U.S. INCHES (METRIC) (MM) | APPROVAL DRAWN Alec.II CHECKED Michael.qin CHECKED | DATE 04/19/23 04/19/23 | Amphenol Amphenol East Asia Limited TITLE USB Type C socket connector, Vertical, Double SMT type, Water proof IPX8 SIZE DRAWING NO. REV. A3 C 12402082 13 SCALE NONE SHEET 1 OF 2 |
| | DRAWING FILE : | | |

This document is the property of Amphenol Corporation and is delivered on the express condition that it is not to be disclosed, reproduced or used, in whole or in part, for manufacture or sale by anyone other than Amphenol Corporation without its prior consent, & that no right is granted to disclose or to use any information in this document.

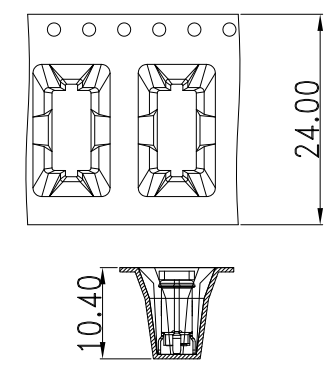
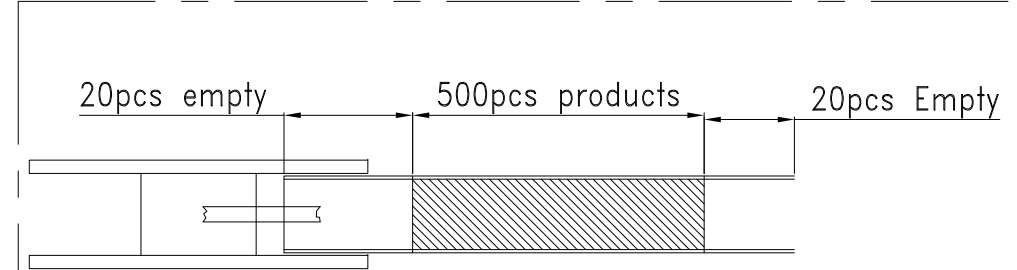
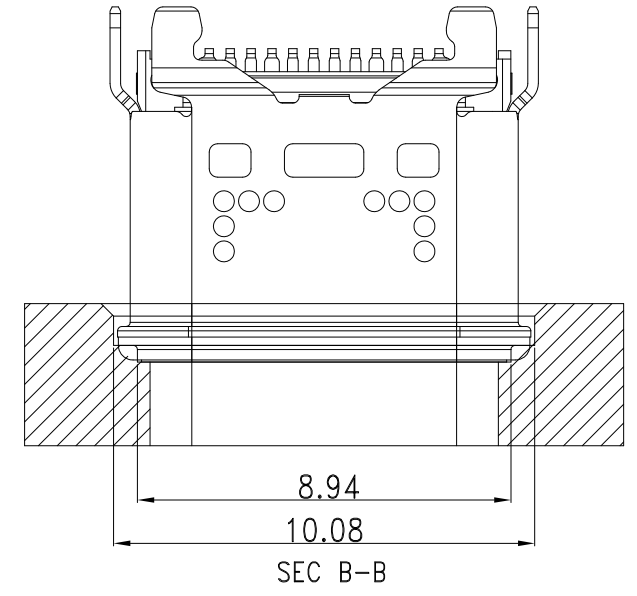
CUSTOMER DRAWING

| REVISIONS | | | | |
|------------|-----|-------------|------|----------|
| SYM | ECN | DESCRIPTION | DATE | APPROVED |
| See page 1 | | | | |

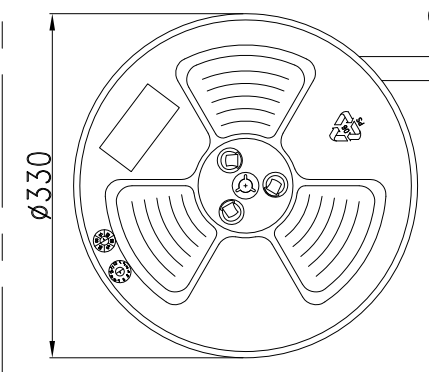
| | |
|------------|---|
| HF(无卤) | √ |
| Non-HF(有卤) | |



Recommended Case/推荐的外壳布局
General Tolerances: ±0.05/一般公差: ±0.05



customer unwinding direction



Packing:
1. 500 Pcs/Reel.
2. 10 Reels/Carton.

NOTES/注释:

- MATERIAL/材料: SEE TABLE/见下表
- GENERAL SPECIFICATION/通用特性:
 - COPLANARITY /共面度: 0.10 Max.
 - CURRENT RATING: 5A / 额定电流: 5安培
 - CONTACT RESISTANCE: 40mΩ MAX (INITIAL).
INSULATION RESISTANCE: 100MΩ Min
接触电阻: 40毫欧最大(初始值) / 绝缘电阻: 100MΩ Min
 - DIELECTRIC WITHSTANDING VOLTAGE: 100 VAC
耐电压: 100伏交流
 - MECHANICAL CHARACTERISTICS:
INSERTION FORCE: 5~20N EXTRACTION FORCE: 8~20N
AFTER DURABILITY EXTRACTION FORCE: 6~20N
力学特性: 初始插入力: 5~20N 拔出力: 8~20N
耐久后拔出力: 6~20N
 - DURABILITY: 10000 CYCLES / 耐久性: 10000次
 - PACKAGING TYPE: CARRIER TAPE./ 包装类型: 载带包装
- WATERPROOF CLASS IPX8/防水等级 IPX8
- DIMENSIONING SHALL BE INTERPRETED PER ASME Y14.5M 1994.
尺寸标注基于ASME Y14.5M 1994标准规范
- MATERIAL SHOULD BE FULFILLED AMPHENOL SPEC.# S-SN-002, FOR HALOGEN FREE PRODUCTS, ALSO NEED TO MEET S-SN-004.
产品材料环保标准为Amphenol SSN#002,如果是无卤产品需满足标准SSN#004
- ORDER P/N SYSTEM/产品料号编码系统: 12402082E512A

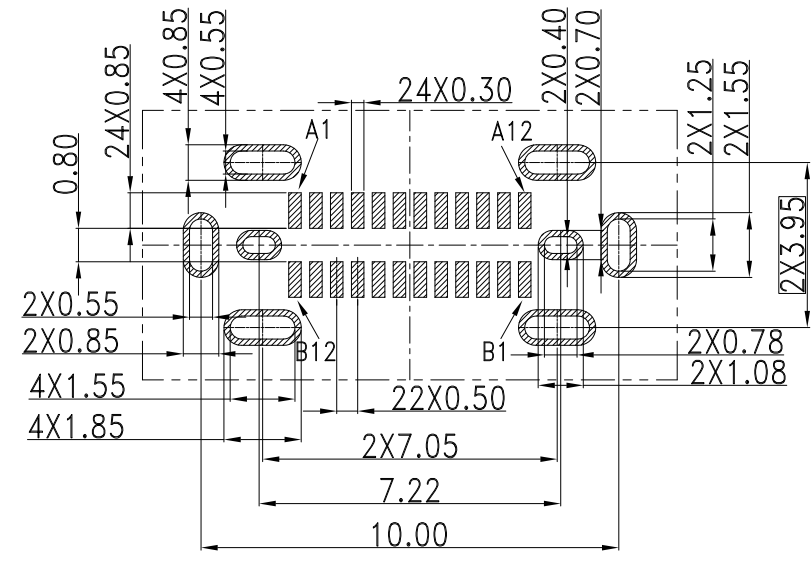
Plating Spec:
E5: Mating Area: Au 30u" Min
Solder Area: Gold flash
50u"Min Nickel Under Plating Over All
P7: Gold on Contact Area: Au 50u" Min
Solder Area: Gold flash
50u"Min Nickel Under Plating Over All

Package Spec.
2:Reel
Date Code Description
0:Without D/C
1:With D/C

| ITEM | DESCRIPTION | Q'TY | MATERIAL | |
|------|-----------------|------|--------------------------|------------------------|
| 8 | GAP | 1 | HIGH TEMPERATURE PLASTIC | BLACK |
| 8 | UV | 1 | GLUE | RED |
| 7 | SMALL SHELL | 1 | STAINLESS STEEL | NI PLATED OR CLEANING |
| 6 | MAIN SHELL | 1 | STAINLESS STEEL | NI PLATED OR CLEANING |
| 5 | OUTOR SHELL | 1 | STAINLESS STEEL | SOLDER NICKEL: 30" MIN |
| 4 | MID PLATE | 1 | STAINLESS STEEL | NICKEL: 30U" MIN |
| 3 | BOTTOM TERMINAL | 1 | COPPER ALLOY | See Notes |
| 2 | TOP TERMINAL | 1 | COPPER ALLOY | See Notes |
| 1 | MOLDING HOUSING | 1 | HIGH TEMPERATURE PLASTIC | BLACK |

BILL OF MATERIAL

| | | | |
|--|---------------------|----------|---|
| UNLESS OTHERWISE SPECIFIED TOLERANCES U.S. METRIC .X +/- 0.50 .XX +/- 0.25 .XXX +/- 0.10 FRACTIONS +/- ANGLES +/- 3° | APPROVAL | DATE | Amphenol Amphenol East Asia Limited |
| | DRAWN Alec.II | 04/19/23 | |
| FOR MATERIALS AND FINISHES SEE NOTES | CHECKED Michael.qin | 04/19/23 | TITLE USB Type C socket connector, Vertical, Double SMT type, Water proof IPX8 |
| REMOVE SHARP EDGES | DRAWING FILE : | | SIZE DRAWING NO. A3 C 12402082 |
| DIMENSIONS | ANGLE OF PROJECTION | | REV. 13 |
| U.S. INCHES (METRIC) (MM) | SCALE NONE | | SHEET 2 OF 2 |



Recommended PCB Layout(Top View)/推荐的PCB布局(前视图)
General Tolerances: ±0.05/一般公差: ±0.05