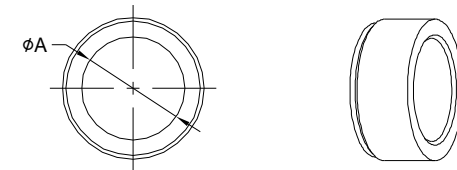
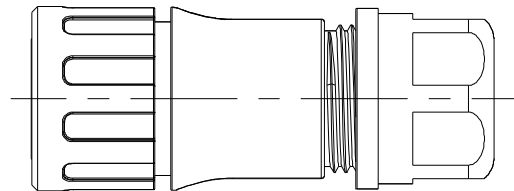
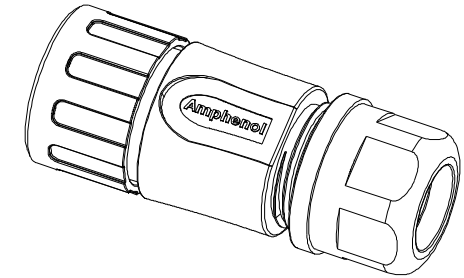
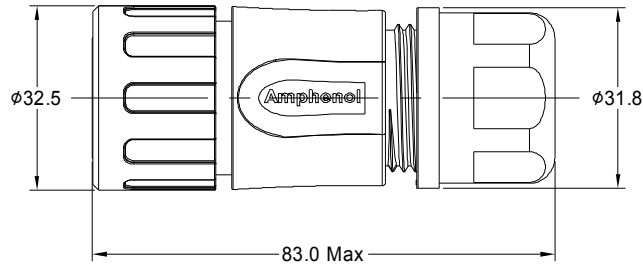
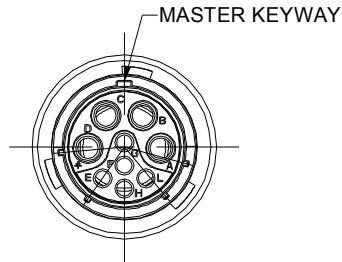


| REVISIONS | | | | | |
|-----------|-----|--------------------------------|-------------|-------|-------|
| REV | ECO | DESCRIPTION | DATE | BY | APPR |
| A1 | - | RELEASED DRAWING | Dec-26-2016 | Ben | Tommy |
| A2 | - | UPDATE NOTES | Jul-04-2017 | Nick | Tommy |
| A3 | - | UPDATE DRAWING | Jan-24-2018 | Nick | Tommy |
| A4 | - | UPDATE DRAWING | Mar-20-2018 | Nick | Tommy |
| A5 | - | UPDATE DESCRIPTION AND VOLTAGE | SEP-23-2021 | BLINK | TOMMY |



NOTES : (UNLESS OTHERWISE SPECIFIED)

1. MATERIAL :

- 1.1 SHELL : THERMOPLASTIC , UL94 V-0.
- 1.2 INSERT : THERMOPLASTIC , UL94 V-0.
- 1.3 O-RING : NBR/SILICONE RUBBER.
- 1.4 BACK SHELL : THERMOPLASTIC , UL94 V-0.
- 1.5 CLAMP NUT : THERMOPLASTIC , UL94 V-0.
- 1.6 CLAMP RING : THERMOPLASTIC , UL94 V-0.
- 1.7 CABLE SEAL : EPDM.

2. SPECIFICATIONS :

- 2.1 RATED CURRENT :
 - 2.1.1 2.5mm 20A (MAX) .
 - 2.1.2 16# 5A (MAX) .
- 2.2 RATED VOLTAGE : 500V(AC/DC).
- 2.3 OPERATING TEMPERATURE : SEE TABLE.
- 2.4 DIELECTRIC WITHSTANDING VOLTAGE : LESS THAN 2 MILLIAMPS CURRENT LEAKAGE@2000 VOLTS AC.
- 2.5 INSULATION RESISTANCE : 5000 MEGOHMS MIN.
- 2.6 IP--CLASS : IP67 AND IP69K IN THE MATED CONDITION.
- 2.7 MATING CYCLES DURABILITY : 500 CYCLES MIN.
- 2.8 RoHS COMPLIANT.

3. SUITABLE CONTACTS : 2.5mm & 16# CONTACTS.

4. ALL DIMENSIONS ARE FOR REFERENCE USE ONLY.

| DIMENSION ϕA | CABLE OD RANGE |
|--------------------|----------------|
| 14.5MM | 10.0-14.0mm |
| 17.5MM | 13.5-17.0mm |

| KEY | PART NUMBER | |
|-----|----------------|----------------|
| | -40°C ~ +105°C | -40°C ~ +125°C |
| N | RTS6BS16N09S | RTS6BS16N09S03 |

| QUANTITY | PART NUMBER | DESCRIPTION | ITEM |
|---|-------------|--|------|
| MATERIALS LIST | | | |
| UNLESS OTHERWISE SPECIFIED 1) All dimensions are in metric(mm). 2) Tolerances are as follows: 1 PL DEC ± 0.30 2 PL DEC ± 0.15 3 PL DEC ± 0.08 Fractions $\pm 1/64$ Angles $\pm 1^\circ$ | | SIGNATURES DATE DRAWN: BLINK SEP-23-2021 CHECKED: ORION SEP-24-2021 ENGINEER: APPROVAL: TOMMY SEP-27-2021 CUSTOMER: | |
| MATERIAL SPECIFICATIONS: THIS DRAWING IS SUPPLIED FOR INFORMATION ONLY. DESIGN FEATURES, SPECIFICATIONS AND PERFORMANCE DATA SHOWN HEREON ARE THE PROPERTY OF THE AMPHENOL CORPORATION. NO RIGHTS OF REPRODUCTION ARE IMPLIED. ALL DIMENSIONS ARE SUBJECT TO NORMAL MANUFACTURING VARIATIONS. | | Sine Systems - www.amphenol-sine.com 44724 Morley Drive Clinton Township, MI 48036 | |
| PROCESS SPECIFICATIONS: NEXT ASSY: | | EcoMate Aquarius, PLUG, BACK SHELL, SIZE 16,9POS, SOCKET. SIZE TYPE DWG NO: RTS6BS16*09Sxx REVISION A5 SCALE NONE SHEET 1 OF 1 | |

TITLE: EcoMate Aquarius, PLUG, BACK SHELL, SIZE 16,9POS, SOCKET. DWG NO.: RTS6BS16*09Sxx REV: A5 SH: 1 OF: 1

ecomate® RM/RSSM/Aquarius™ - Contact Size 16 Options

| Machined, Crimp Contacts | | | | |
|--------------------------|------------|--------------------|-------------------------------|------------|
| Part Number | | Contact Size (AWG) | Wire Range (mm ²) | Plating |
| Male | Female | | | |
| MP14M23F | MS14M23F | 14AWG | 2.0-2.5mm ² | Gold Flash |
| MP14M23G5 | MS14M23G5 | 14AWG | 2.0-2.5mm ² | Gold 5µ" |
| MP14M23G10 | MS14M23G10 | 14AWG | 2.0-2.5mm ² | Gold 10µ" |
| MP14M23G15 | MS14M23G15 | 14AWG | 2.0-2.5mm ² | Gold 15µ" |
| MP14M23G30 | MS14M23G30 | 14AWG | 2.0-2.5mm ² | Gold 30µ" |
| MP16M23F | MS16M23F | 18-16AWG | 0.75-1.5mm ² | Gold Flash |
| MP16M23G5 | MS16M23G5 | 18-16AWG | 0.75-1.5mm ² | Gold 5µ" |
| MP16M23G10 | MS16M23G10 | 18-16AWG | 0.75-1.5mm ² | Gold 10µ" |
| MP16M23G15 | MS16M23G15 | 18-16AWG | 0.75-1.5mm ² | Gold 15µ" |
| MP16M23G30 | MS16M23G30 | 18-16AWG | 0.75-1.5mm ² | Gold 30µ" |
| MP20M23F | MS20M23F | 22-20AWG | 0.34-0.50mm ² | Gold Flash |
| MP20M23G5 | MS20M23G5 | 22-20AWG | 0.34-0.50mm ² | Gold 5µ" |
| MP20M23G10 | MS20M23G10 | 22-20AWG | 0.34-0.50mm ² | Gold 10µ" |
| MP20M23G15 | MS20M23G15 | 22-20AWG | 0.34-0.50mm ² | Gold 15µ" |
| MP20M23G30 | MS20M23G30 | 22-20AWG | 0.34-0.50mm ² | Gold 30µ" |
| MP24M23F | MS24M23F | 26-24AWG | 0.14-0.25mm ² | Gold Flash |
| MP24M23G5 | MS24M23G5 | 26-24AWG | 0.14-0.25mm ² | Gold 5µ" |
| MP24M23G10 | MS24M23G10 | 26-24AWG | 0.14-0.25mm ² | Gold 10µ" |
| MP24M23G15 | MS24M23G15 | 26-24AWG | 0.14-0.25mm ² | Gold 15µ" |
| MP24M23G30 | MS24M23G30 | 26-24AWG | 0.14-0.25mm ² | Gold 30µ" |

| Stamped & Formed, Crimp Contacts | | | | |
|----------------------------------|-----------|--------------------|-------------------------------|------------|
| Part Number | | Contact Size (AWG) | Wire Range (mm ²) | Plating |
| Male | Female | | | |
| SP14M2F | SS14M2F | 14AWG | 2.0-2.5mm ² | Gold Flash |
| SP14M2G5 | SS14M2G5 | 14AWG | 2.0-2.5mm ² | Gold 5µ" |
| SP14M2G10 | SS14M2G10 | 14AWG | 2.0-2.5mm ² | Gold 10µ" |
| SP14M2G15 | SS14M2G15 | 14AWG | 2.0-2.5mm ² | Gold 15µ" |
| SP14M2G30 | SS14M2G30 | 14AWG | 2.0-2.5mm ² | Gold 30µ" |
| SP16M2F | SS16M2F | 18-16AWG | 0.75-1.5mm ² | Gold Flash |
| SP16M2G5 | SS16M2G5 | 18-16AWG | 0.75-1.5mm ² | Gold 5µ" |
| SP16M2G10 | SS16M2G10 | 18-16AWG | 0.75-1.5mm ² | Gold 10µ" |
| SP16M2G15 | SS16M2G15 | 18-16AWG | 0.75-1.5mm ² | Gold 15µ" |
| SP16M2G30 | SS16M2G30 | 18-16AWG | 0.75-1.5mm ² | Gold 30µ" |
| SP20M2F | SS20M2F | 22-20AWG | 0.34-0.50mm ² | Gold Flash |
| SP20M2G5 | SS20M2G5 | 22-20AWG | 0.34-0.50mm ² | Gold 5µ" |
| SP20M2G10 | SS20M2G10 | 22-20AWG | 0.34-0.50mm ² | Gold 10µ" |
| SP20M2G15 | SS20M2G15 | 22-20AWG | 0.34-0.50mm ² | Gold 15µ" |
| SP20M2G30 | SS20M2G30 | 22-20AWG | 0.34-0.50mm ² | Gold 30µ" |
| SP24M2F | SS24M2F | 26-24AWG | 0.14-0.25mm ² | Gold Flash |
| SP24M2G5 | SS24M2G5 | 26-24AWG | 0.14-0.25mm ² | Gold 5µ" |
| SP24M2G10 | SS24M2G10 | 26-24AWG | 0.14-0.25mm ² | Gold 10µ" |
| SP24M2G15 | SS24M2G15 | 26-24AWG | 0.14-0.25mm ² | Gold 15µ" |
| SP24M2G30 | SS24M2G30 | 26-24AWG | 0.14-0.25mm ² | Gold 30µ" |

| Machined, Tooling | |
|-------------------|--|
| Part Number | Description |
| QXRT16 | Contact Extraction Tool, #16 (Ø 1.6) Contact |
| MFY-3959 | Hand Crimp Tool for Machined Contacts |
| MFY-3960 | Pneumatic Crimp Tool for Machined Contact |

| Stamped & Formed, Tooling | |
|---------------------------|--|
| Part Number | Description |
| QXRT16 | Contact Extraction Tool, #16 (Ø 1.6) Contact |
| MFY-3954 | Hand Tool, Stamped & Formed Contact, Size 16, 20-14AWG |
| MFY-3957 | Crimp Die, Stamped & Formed Contact |

| Plating Options, All | |
|----------------------|--|
| Symbol | Plating |
| T | Tin Plated (for Stamped & Formed Contacts) |
| S | Silver Plated 5Um (for Machined Contacts) |
| F | Gold Plated |
| G5 | Gold Plated (Thickness 5µ") |
| G10 | Gold Plated (Thickness 10µ") |
| G15 | Gold Plated (Thickness 15µ") |
| G30 | Gold Plated (Thickness 30µ") |

| Misc Tooling, All | |
|-------------------|----------------------------|
| Part Number | Description |
| CA-4020-59 | Sealing Plug, Size 16 & 20 |

| Standard Quantity Order Options | |
|---------------------------------|--------------------------|
| Machined | Bulk Package, 500 Pieces |
| Stamped & Formed | Reel, 3000 Pieces |

ecomate® RM/RSSM/Aquarius™ - Contact Size 12 Options

| Machined, Crimp Contacts | | | | |
|--------------------------|------------|--------------------|-------------------------------|------------|
| Part Number | | Contact Size (AWG) | Wire Range (mm ²) | Plating |
| Male | Female | | | |
| MP12B23T | MS12B23T | 14-12AWG | 2.3-3.5mm ² | Tin |
| MP12B23S | MS12B23S | 14-12AWG | 2.3-3.5mm ² | Silver |
| MP12B23F | MS12B23F | 14-12AWG | 2.3-3.5mm ² | Gold Flash |
| MP12B23G5 | MS12B23G5 | 14-12AWG | 2.3-3.5mm ² | Gold 5μ" |
| MP12B23G10 | MS12B23G10 | 14-12AWG | 2.3-3.5mm ² | Gold 10μ" |
| MP12B23G15 | MS12B23G15 | 14-12AWG | 2.3-3.5mm ² | Gold 15μ" |
| MP12B23G30 | MS12B23G30 | 14-12AWG | 2.3-3.5mm ² | Gold 30μ" |

| Machined, Tooling | |
|-------------------|--|
| Part Number | Description |
| QXRT12S | Contact Extraction Tool, 2.5mm contact |
| UH2-5 | Universal Locator, Fits AF8 and WA27F |
| AF8 | Hand Crimper |
| WA27F | Pneumatic Crimper |

| Plating Options, All | |
|----------------------|----------------------------|
| Symbol | Plating |
| T | Tin Plated |
| S | Silver Plated |
| F | Gold Flash |
| G5 | Gold 5μ" (Thickness 5μ") |
| G10 | Gold 10μ" (Thickness 10μ") |
| G15 | Gold 15μ" (Thickness 15μ") |
| G30 | Gold 30μ" (Thickness 30μ") |

| Stamped & Formed, Crimp Contacts | | | | |
|----------------------------------|---------|--------------------|-------------------------------|---------|
| Part Number | | Contact Size (AWG) | Wire Range (mm ²) | Plating |
| Male | Female | | | |
| SP12A1T | SS12A1T | 14-12AWG | 2.5-3.5mm ² | Tin |

| Stamped & Formed, Tooling | |
|---------------------------|--|
| Part Number | Description |
| QXRT12S | Contact Extraction Tool, 2.5mm Contact |
| MFX-3962 | Hand Tool, Stamped & Formed Contact, 2.5mm Contact |

| Misc Tooling, All | |
|-------------------|-----------------------|
| Part Number | Description |
| CA-4012-59 | Sealing Plug, Size 12 |

| Standard Quantity Order Options | |
|---------------------------------|-------------------|
| Machined | Bag, 500 Pieces |
| Stamped & Formed | Reel, 1000 Pieces |