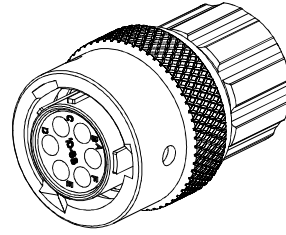
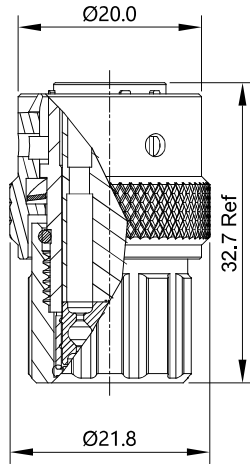
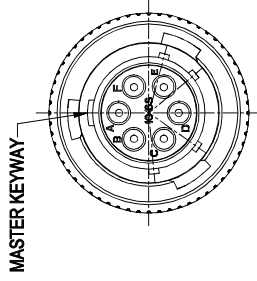
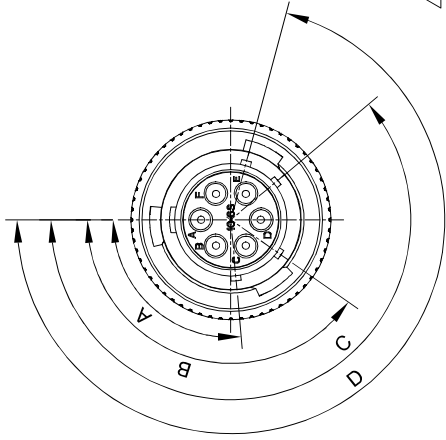


REVISIONS

REV	ECO	DESCRIPTION	DATE	BY	APPR
B1	-	RELEASED DRAWING	July-04-2014	Ben	Tommy
B2	-	MODIFY THE INSERT LETTER LOCATION	May-20-2016	Ben	Tommy
B3	-	ADAPT TO CHANGE OF WIRE DIAMETER	Dec-04-2019	Ronald	Tommy
B4	-	ADD KEY / ICON	Feb-25-2021	Flan	Tommy



NOTES: (UNLESS OTHERWISE SPECIFIED)

- MATERIAL:
 - SHELL: ZINC ALLOY, NICKEL PLATED.
 - INSERT: THERMOPLASTIC, UL94 V-0.
 - END CAP: THERMOPLASTIC, UL94 V-0.
 - COUPLING NUT: AL ALLOY, NICKEL PLATED.
 - WAVE WASHER: STAINLESS STEEL.
 - O-RING: NBR/SILICONE RUBBER.
 - WIRE SEAL: SILICONE RUBBER.
 - PLASTIC BUSHING: THERMOPLASTIC, UL94 V-0.
- SPECIFICATIONS:
 - 2.1 RATED CURRENT:
 - 2.1.1 STAMPED CONTACT 5A (MAX).
 - 2.1.2 MACHINED CONTACT 7.5A (MAX).
 - 2.2 RATED VOLTAGE: 250V (AC/DC)
 - 2.3 OPERATING TEMPERATURE: SEE CHART.
 - 2.4 DIELECTRIC WITHSTANDING VOLTAGE: LESS THAN 2 MILLIAMPS CURRENT LEAKAGE@1500 VOLTS AC.
 - 2.5 INSULATION RESISTANCE: 5000 MEGOHMS MIN.
 - 2.6 IP-CLASS: IP67 (MATED CONDITION).
 - 2.7 MATING CYCLES DURABILITY: 500 CYCLES (MIN).
 - 2.8 RoHS COMPLIANT.
- SUITABLE CONTACTS : 20# CONTACTS.
- ALL DIMENSIONS ARE FOR REFERENCE USE ONLY.
- CONTACT SIZE AND REAR SEAL WIRE RANGE:

KEY POS	PART NUMBER		A	B	C	D
	-40°C ~ 105°C	-40°C ~ 125°C				
N	RT0W6106SNHEC	RT0W6106SNHEC03	95°	145°	220°	255°
W	RT0W6106SWHEC	RT0W6106SWHEC03	95°	145°	220°	315°
X	RT0W6106SXHEC	RT0W6106SXHEC03	95°	145°	200°	255°
Y	RT0W6106SYHEC	RT0W6106SYHEC03	95°	135°	220°	255°
Z	RT0W6106SZHEC	RT0W6106SZHEC03	65°	145°	220°	255°

QUANTITY	PART NUMBER	DESCRIPTION	ITEM
MATERIALS LIST			
<p>UNLESS OTHERWISE SPECIFIED: 1) All dimensions in mm. 2) Tolerances are as follows: 1 P.L. DEC .00-20 2 P.L. DEC .00-30 3 P.L. DEC .00-35 3) Note references = </p>			
SIGNATURES		DATE	
DRAWN:		Feb-25-21	
CHECKED:		Feb-25-21	
ENGINEER:		Feb-25-21	
APPROVAL:		Feb-25-21	
CUSTOMER:		EcoMate RM, PLUG, SIZE 10, 6POS SOCKET END CAP.	
<p>THIS DRAWING IS SUPPLIED FOR INFORMATION ONLY. DESIGN FEATURES AND DIMENSIONS SHOWN HEREON ARE THE PROPERTY OF AMPHENOL SINTECH. ALL RIGHTS OF REPRODUCTION ARE RESERVED. DIMENSIONS ARE SUBJECT TO NORMAL MANUFACTURING VARIATIONS.</p>			
PROCESS SPECIFICATIONS:		SCALE: NONE	
NEXT ASSY:		SHEET 1 OF 1	

Amphenol

Sinte Systems - www.amphenol-sinte.com
 44724 Morley Drive
 Clinton Township, MI 48036

CONTACT SIZE	MIN. INSUL O.D.	MAX. INSUL O.D.
20#	Ø1.4mm	Ø2.1mm