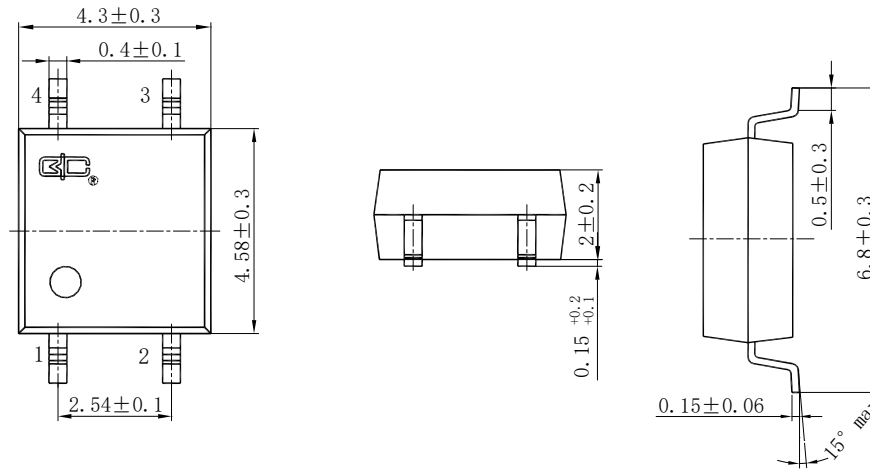


| 产品图片 | Features 产品特性 | Application 应用 |
|-------------|------------------------------------------------------------------------------------------------------------------------------------------------------------------------------------------------------------|---------------------------------------------------------------------------------------------------------------------------------------------------------------------------------------------------------------------------------------------------------------------|
| <p>SOP4</p> | <ul style="list-style-type: none"> ●Contact Form 触点形式 1a ●Load Voltage 输出电压 400V ●Load Current 输出电流 0.12A ●Low Off-State Leakage Current 漏电流 1μA | <ul style="list-style-type: none"> ●Automatic Test Equipment 自动检测设备 ●Telephone Equipment 通信设备 ●Sensing Equipment 传感设备 ●Security Equipment 安全设备 ●I/O Modules I/O 模块 ●Modem 调制解调器 |

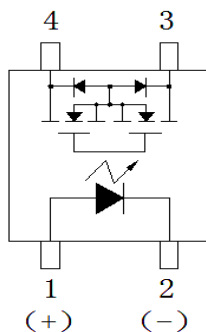
Type 种类

| Output rating 输出额定 | | Marking model 标刻型号 | Part No. 订货型号 |
|----------------------|-----------------------|-----------------------|---------------|
| Load voltage 负载电压 | Load current 负 载电流 | | |
| 400V | 0.12A | BCY214S | BCY214S |

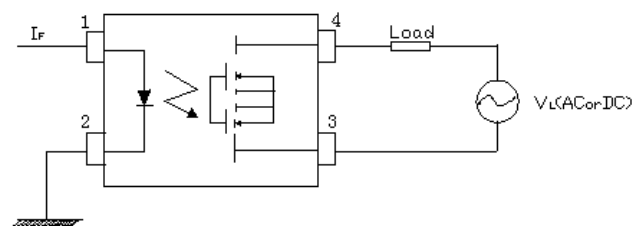
Dimensions 外形尺寸



Terminal Identification 引脚标识



Wiring Diagram 接线图





Technical parameters 技术参数 (Ambient Temperature 25°C)

I/O Absolute Maximum Ratings 输入输出电气参数最大值

| Item 项目 | | Symbol 符号 | BCY214S | |
|---------------------------------|-------------------------------------------------|-----------|--------------|----------------------|
| Operating Temperature 工作温度 | | T_{OPR} | -40°C~+85°C | |
| Storage Temperature 储存温度 | | T_{STG} | -40°C~+100°C | |
| Input 输入 | Continuous LED Current 工作电流 | MAX. 最大值 | I_F | 50mA |
| | Peak LED Current LED 峰值电流 (f=100Hz, Duty=1%) | MAX. 最大值 | I_{FP} | 500mA |
| | LED Reverse Voltage 反向电压 | MAX. 最大值 | V_R | 5V |
| | Input Power Dissipation 输入功耗 | MAX. 最大值 | P_{IN} | 75mW |
| Output 输出 | Load Voltage 输出电压 | MAX. 最大值 | V_L | 400V (AC peak or DC) |
| | Load Current 输出电流 | MAX. 最大值 | I_L | 0.12A |
| | Peak Load Current 峰值输出电流 (100ms, 1shot) | MAX. 最大值 | I_{PEAK} | 0.6A |
| | Output Power Dissipation 输出功耗 | MAX. 最大值 | P_{OUT} | 300mW |
| Total Power Dissipation 总功耗 | | MAX. 最大值 | P_T | 350mW |
| I/O Breakdown Voltage 输入输出间隔离电压 | | MAX. 最大值 | $V_{I/O}$ | 1500Vrms |

Electrical Specifications 输入输出电气参数

| Item 项目 | | Symbol 符号 | BCY214S | Conditions 条件 | | |
|----------------------|--------------------------------|-----------|-------------|---------------|-----------------------------------------|---------|
| Input 输入 | LED Forward Voltage 正向电压 | TYP. 典型值 | V_F | 1.2V | $I_F=10mA$ | |
| | | MAX. 最大值 | | 1.5V | | |
| | Operation LED Current 接通电流 | TYP. 典型值 | $I_{F ON}$ | | 0.5mA | |
| | | MAX. 最大值 | | | 3mA | |
| | Recovery LED Voltage 关断电压 | MIN. 最小值 | $V_{F OFF}$ | 0.5V | | |
| Output 输出 | On-Resistance 导通电阻 | TYP. 典型值 | R_{ON} | 13Ω | $I_F=5mA, I_L=Rating.$ within 1 sec. | |
| | | MAX. 最大值 | | | | 18Ω |
| | Off-State Leakage Current 漏电流 | MAX. 最大值 | I_{LEAK} | 1μA | $V_L=Rating$ | |
| | Output Capacitance 输出端容量 | TYP. 典型值 | C_{OUT} | 52pF | $V_L=0V, f=1MHz$ | |
| Time parameters 时间参数 | Turn-On Time 接通时间 | TYP. 典型值 | T_{ON} | 0.2ms | $I_F=5mA, I_L=100mA$ | |
| | | MAX. 最大值 | | | | 1.0ms |
| | Turn-Off Time 关断时间 | TYP. 典型值 | T_{OFF} | | | 0.025ms |
| | | MAX. 最大值 | | | | 0.2ms |
| I/O 输入输出 | I/O Insulation Resistance 绝缘电阻 | MIN. 最小值 | $R_{I/O}$ | 1000MΩ | DC500V | |
| | I/O Capacitance 隔离电容 | TYP. 典型值 | $C_{I/O}$ | 1.3pF | f=1MHz | |

通讯地址: 陕西省西安市国家民用航天产业基地航天中路385号众创广场11层1101.1102.1104室

生产地址: 陕西省宝鸡市陈仓区群力路1号 邮政编码: 721300

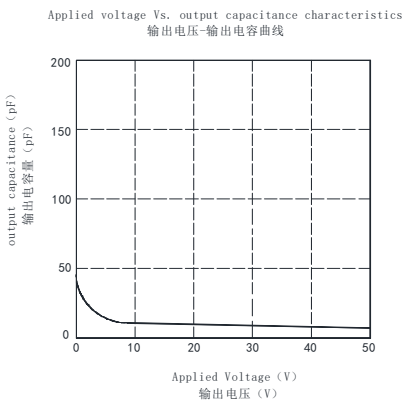
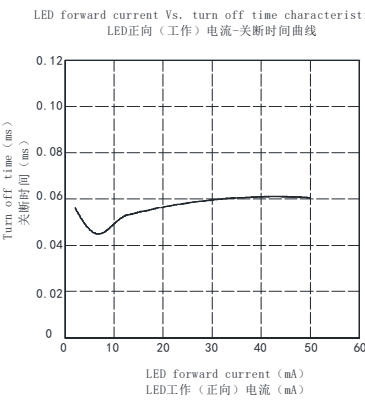
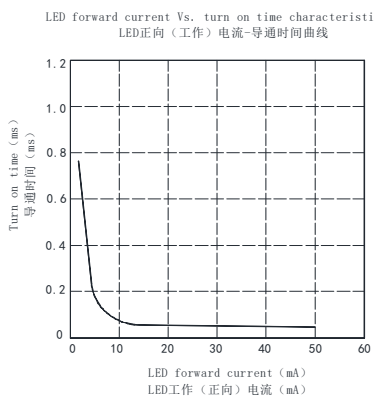
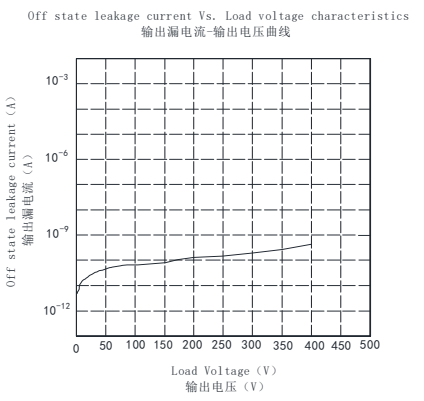
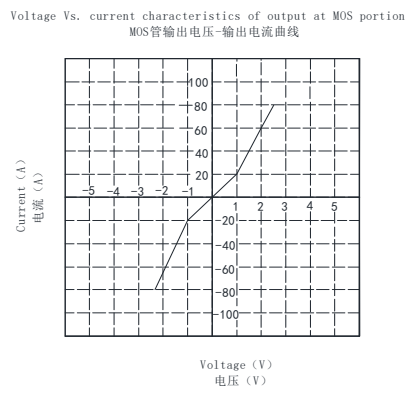
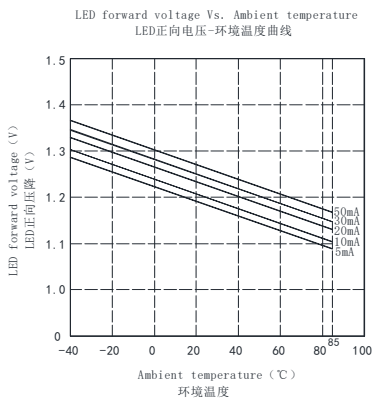
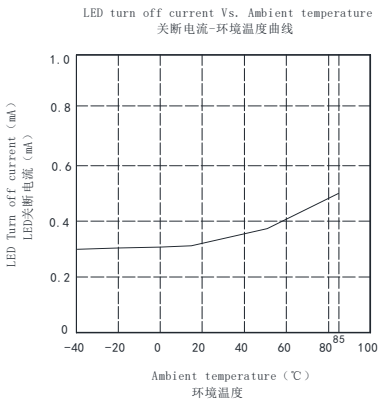
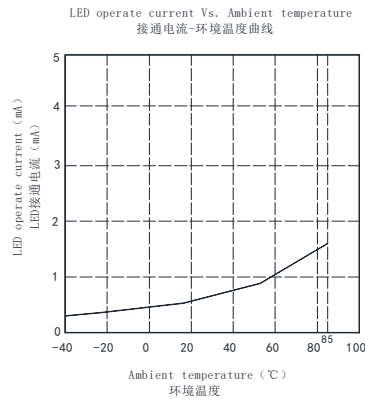
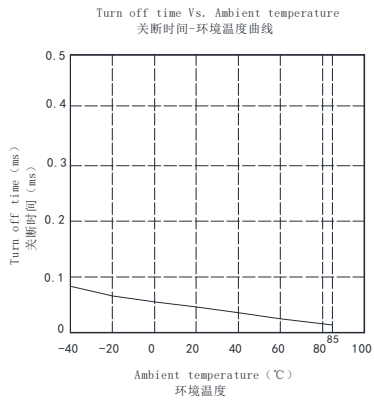
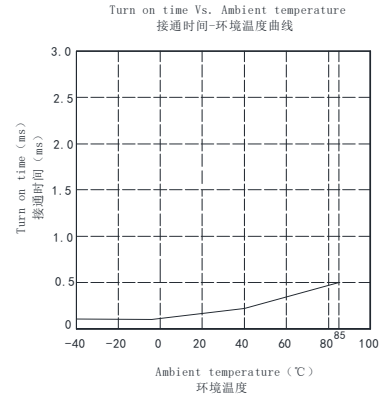
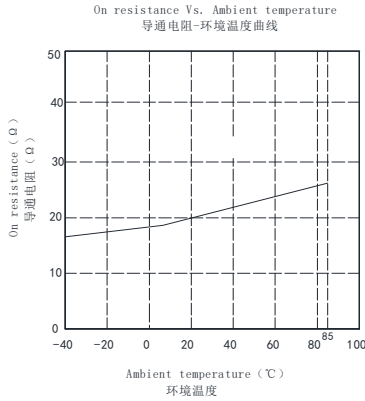
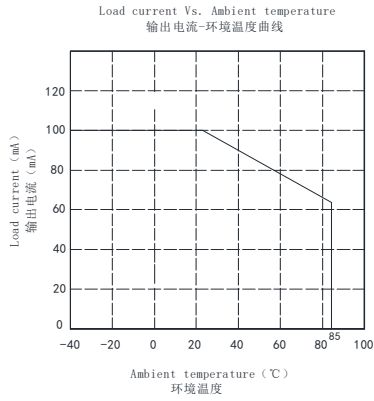
电话: (0917)-6293969 18292759517

传 真: (0917)-6293969



PhotoMOS 光 MOS 继电器 (SOP4)

Reference Data 参考数值 (BCY214S)



通讯地址: 陕西省西安市国家民用航天产业基地航天中路385号众创广场11层1101.1102.1104室

生产地址: 陕西省宝鸡市陈仓区群力路1号 邮政编码: 721300

电话: (0917)-6293969 18292759517

传 真: (0917)-6293969