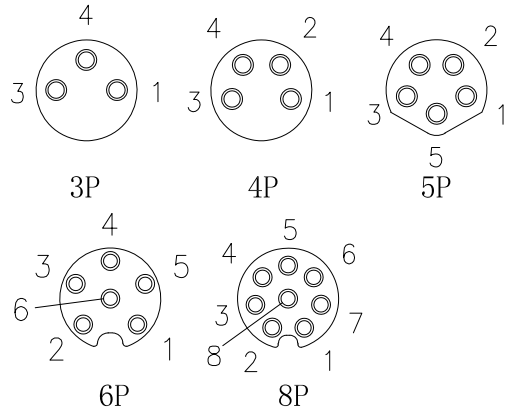
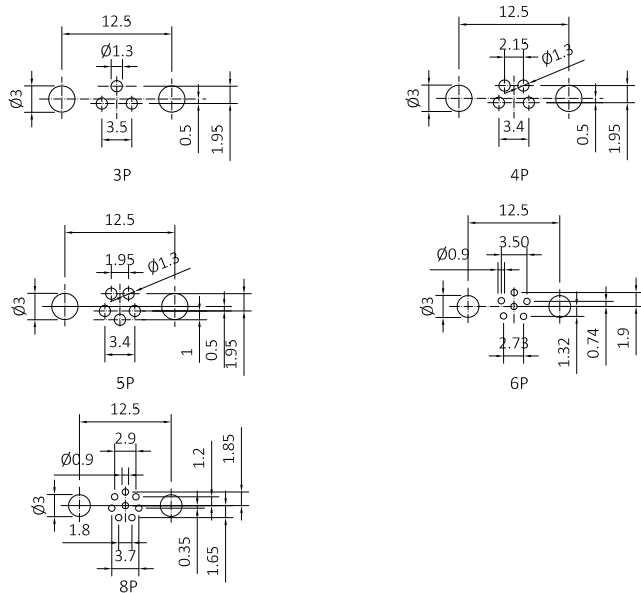


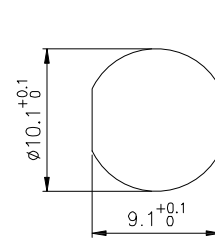
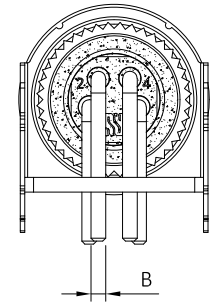
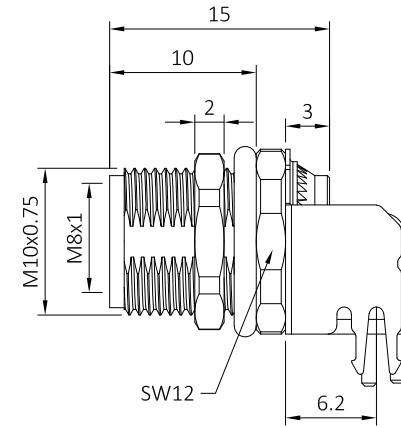
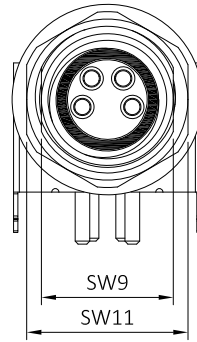
PIN layout



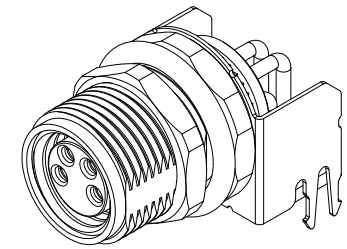
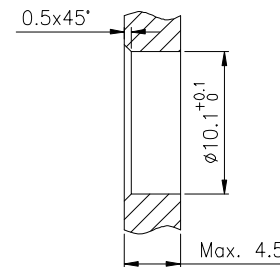
PCB Layout



8	O-Ring	Rubber, green	1
7	Location-plate	PA66,Black	1
6	Contact	Brass; Gold-plated	3~8
5	Shielded	Brass; Gold-plated	1
4	O-Ring	Rubber, Black	1
3	Nut	Brass; Nickel plated	1
2	Body	M8 female Shell, Brass; Nickel plated	1
1	Housing	PA66,Black	1
No.	PART NAME	DESCRIPTION	Q'TY



Recommended Panel cut-out



B:
2~5P: Ø1mm
6~8P: Ø0.6mm

Technical specifications:
1. Rated voltage/current:
3/4pin:60V/3A
5pin:30V/3A
6/8pin:30V/1.5A
2. Degree of protection:IP67
3. Temperature range:-25°C~+80°C
4. Mating cycles: ≥ 500

-TOLERANCES- UNLESS OTHERWISE SPECIFIED UNLESS OTHERWISE SPECIFIED TOLERANCES FOR MILLIMETERS ARE: 0.5 - 8mm ± 0.20mm 8 - 30mm ± 0.25mm 30 - 120mm ± 0.30mm	RENHOTEC GROUP	
	PART DESCRIPTION: R/A M8 female Connector	
	Appr: JIM.KING P/N: RHT-634-3282	
	Check:	Date: 2023.05.05