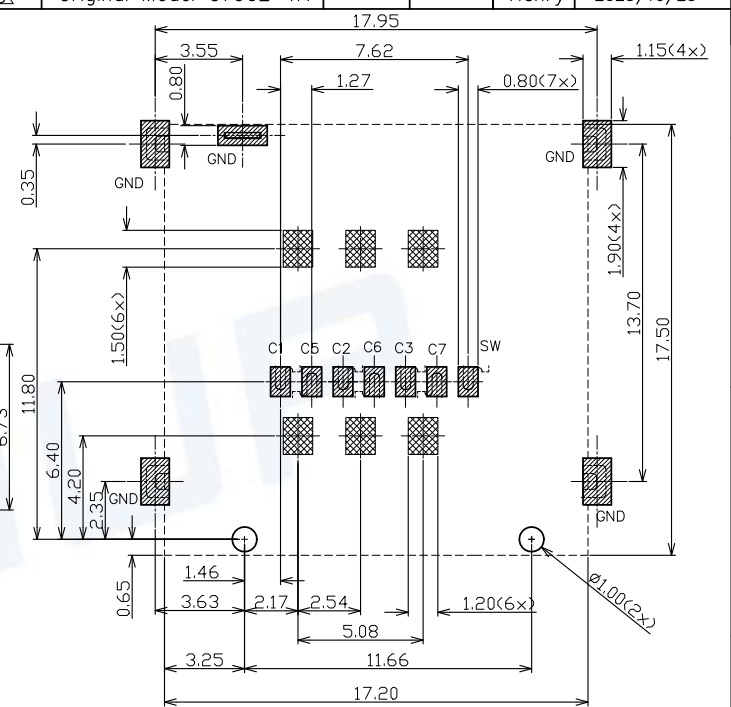
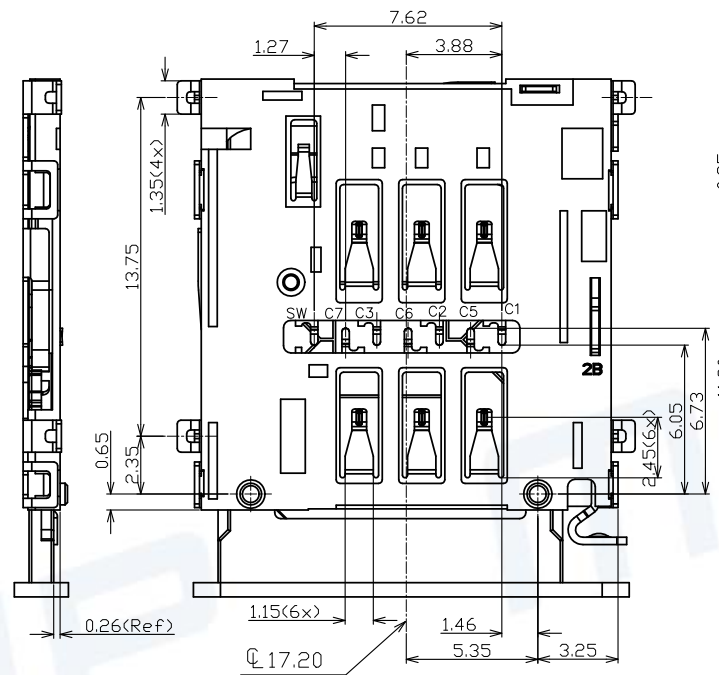
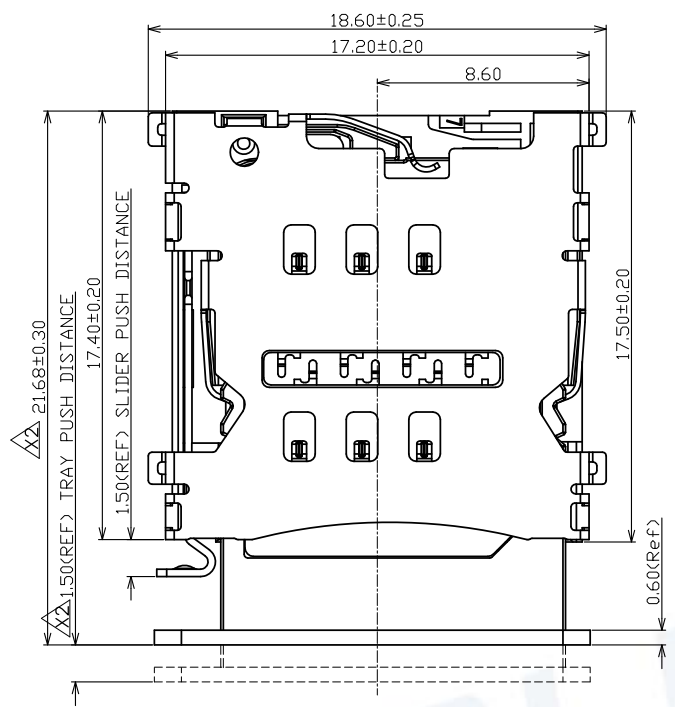


REV.	DESCRIPTION OF REVISIONS	APPR.	CHKD.	DRAW.	DATE
△	NEW			Henry	2018/04/14
△	Change DIM			Henry	2021/10/14
△	Original Model C7902-1A			Henry	2023/10/23

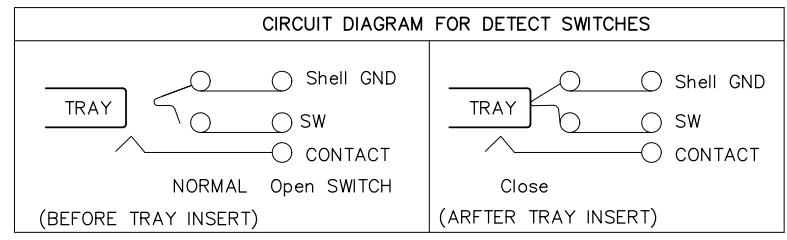


RECOMMENDED P.C.B LAYOUT
 COMPONENT SIDE (TOLERANCE ±0.05)
 ▨ PAD AREA
 - - - CONNECTOR OUTLINE
 ▩ NO PATTERN AND VIA HOLE IN THIS AREA

TECHNICAL CHARACTERISTICS
 1.General Characteristics
 Dimensions:17.20LX17.50WX1.55H mm
 TRAY MATING FORCE:2~10N
 TRAY UNMATING FORCE:4~10N
 Durability:3,000 cycles min.
 2.Electrical Characteristics
 Contact resistance:50mΩ typical,
 100mΩMax
 Insulation resistance:>1000M/500V DC
 3.Solderability
 Vaporphase:215°C, 30sec.Max
 IR reflow:260°C,5sec.Max
 Manual soldering:370°C,3sec.Max
 4.Environmental Characteristics
 Operating temperature:-40°C~+85°C
 Operating humidity:10%~+95%RH

ITEM	PART NAME	Q'TY	MATERIAL	FINISH
1	HOUSING	1	Hi-temp Thermoplastic	Black UL94V-0
2	DATA CONTACT	6	Copper Alloy	Contact area:Gold plated
3	SWITCH	1	Copper Alloy	Contact area:Gold plated
4	SHELL	1	Stainless Steel	Solder area:Gold plated
5	Lever		Stainless Steel	
6	Cam		Stainless Steel	

NANO SIM CARD	
Pin No.	ASSIGNMENT
C1	VCC
C2	RST
C3	CLK
C5	GND
C6	VPP
C7	I/O



Unless otherwise specified, other tolerance are:
 X ±0.35 X* ±5°
 X.X ±0.25 X.X* ±4°
 X.XX ±0.15 X.XX* ±3°
 X.XXX ±0.10 X.XXX* ±2°
 PROJ. UNIT SCALE DRAWN Henry Ou.04.2018 DWG NO.: DWG-C7902-01-01
 CHECKED Henry Ou.04.2018 SHEET 1/1 REVISION 2
 CUSTOMER DRAWING APPROVAL Simon 04.2018

MUP MUP INDUSTRIAL CO.,LTD.
 NAME: **SINGLE Micro SIM Card Connector**
 MODEL NO: **MUP-C7902-01**
 TYPE: **H1.55mm Normally Open & With Tray type**