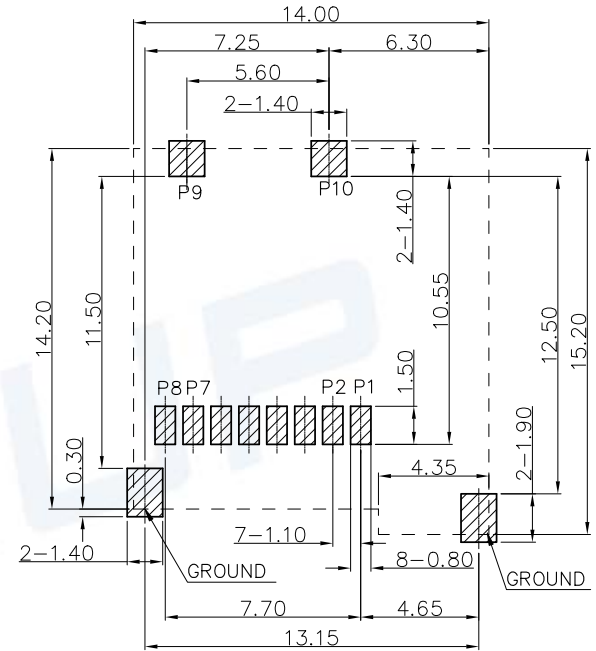
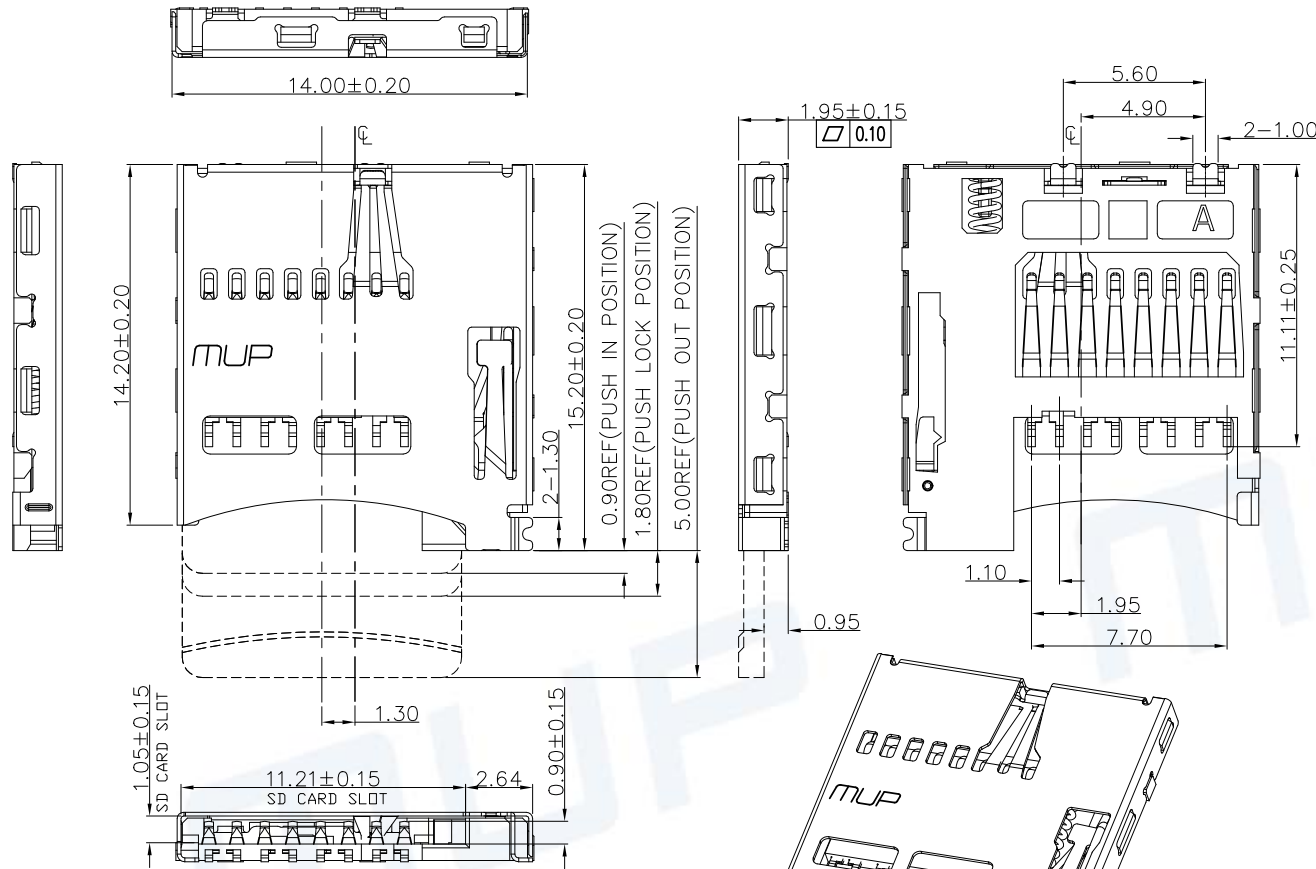


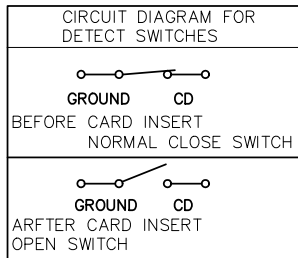
REV.	DESCRIPTION OF REVISIONS	APPR.	CHKD.	DRAW.	DATE
△	NEW			Henry	2021/06/20
△	Original Model M627-1			Henry	2023/10/24



RECOMMENDED PCB LAYOUT  
(ALL TOLERANCE ARE ±0.05)

▨ PAD AREA  
▭ CONNECTOR OUTLINE

Pin No.		MICRO SD
PIN1	DAT2	1P
PIN2	CD/DAT3	2P
PIN3	CMD	3P
PIN4	VDD	4P
PIN5	CLK	5P
PIN6	VSS	6P
PIN7	DAT0	7P
PIN8	DAT1	8P
PIN9	CARD DETECT	
PIN10		



TECHNICAL CHARACTERISTICS

- General Characteristics  
Dimensions:15.20LX14.0WX1.90H mm  
Weight:Approx 0.5g  
Durability:3,000 cycles min.
- Electrical Characteristics  
Contact resistance: 50mΩ typical,100mΩ max  
Insulation resistance:>1000MΩ/500V DC
- Solderability  
Vapor phase:215°C,30sec.Max  
IR reflow:260°C,10sec.Max  
Manual soldering:370°C,3sec.Max
- Environmental Characteristics  
Operating temperature:-40°C~+85°C  
Operating humidity:10%~+95%RH



7	CD PIN	1	Copper Alloy	Contact area:Gold plated
6	CAM PIN	1	Stainless Steel	NO plating
5	HEART CAM	1	Hi-temp Thermoplastic	Black UL94V-0
4	SPRING	1	SWP.	Ni plating
3	SHELL	1	Stainless Steel	SMT area:Gold plated
2	TEMINAL	8	Copper Alloy	Contact area:Gold plated
1	HOUSING	1	Hi-temp Thermoplastic	Black UL94V-0
No.	DESCRIPTION	Q'TY	MATERIAL	FINISH

Unless otherwise specified, other tolerance are:

X ±0.35	X' ±5'
X.X ±0.25	X.X' ±4'
X.XX ±0.15	X.XX' ±3'
X.XXX ±0.10	X.XXX' ±2'

PROJ. UNIT SCALE: mm 1:1

CUSTOMER DRAWING

**MUP** MUP INDUSTRIAL CO.,LTD.

NAME: **MicroSD CARD CONNECTOR**

MODEL NO: **MUP-M6027-01**

TYPE: **Without Post / Normally close**

DRAWN	Henry Jun.20.2021	DWG NO.:	DWG-M6027-01-01
CHECKED	Henry Jun.20.2021	SHEET	1/1
APPROVAL	Simon Jun.20.2021	REVISION	2