

Engineer Drawing

NOTES:

MATERIAL:

- 1: HOUSING: THERMO-PLASTIC. UL 94V-0 NATURE
- 2: CONTACT: PHOSPHOR BRONZE
- CONTACT: SEE ORDER INFORMATION;

SOLDER: GOLD FLASH

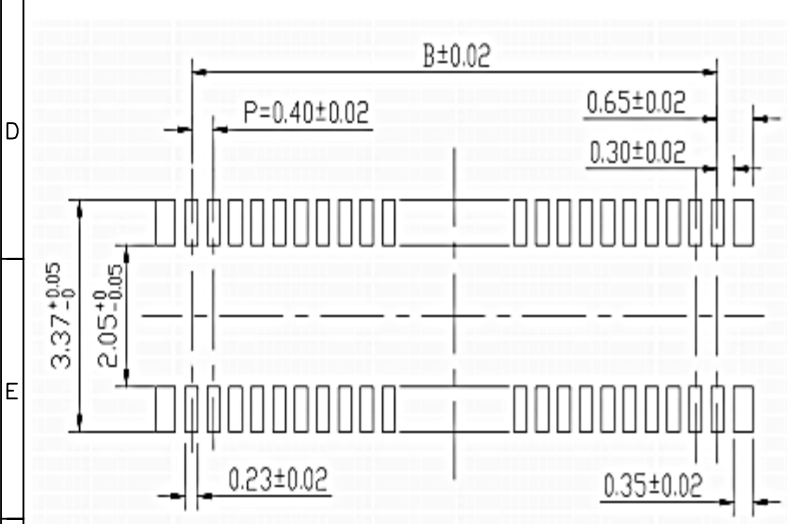
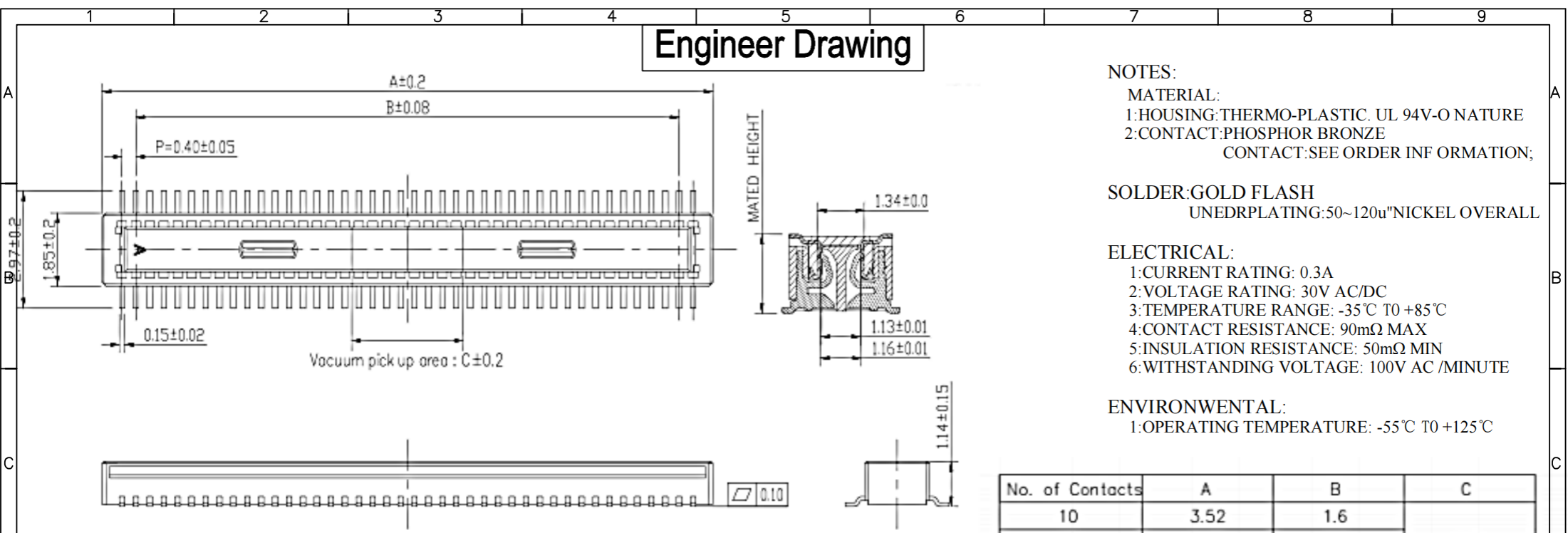
UNEDR PLATING: 50~120u" NICKEL OVERALL

ELECTRICAL:

- 1: CURRENT RATING: 0.3A
- 2: VOLTAGE RATING: 30V AC/DC
- 3: TEMPERATURE RANGE: -35°C TO +85°C
- 4: CONTACT RESISTANCE: 90mΩ MAX
- 5: INSULATION RESISTANCE: 50mΩ MIN
- 6: WITHSTANDING VOLTAGE: 100V AC / MINUTE

ENVIRONMENTAL:

- 1: OPERATING TEMPERATURE: -55°C TO +125°C



IPC B 04 * * * * * * * *

- ①
- ②
- ③
- ④
- ⑤
- ⑥
- ⑦
- ⑧

- ① Series Type
- ② Pitch
- ③ Height
- ④ Serial Code
- ⑤ Connector Type
- ⑥ Pin Code
- ⑦ Internal Code
- ⑧ Other Code

No. of Contacts	A	B	C
10	3.52	1.6	1.0
12	3.92	2.0	
20	5.52	3.6	
24	6.32	4.4	1.2
30	7.52	5.6	1.5
34	8.32	6.4	2.3
40	9.52	7.6	3.2
44	10.32	8.4	
50	11.52	9.6	
60	13.52	11.6	
70	15.52	13.6	
80	17.52	15.6	
90	19.52	17.6	
100	21.52	19.6	

Recommended PC board pattern
(TOP VIEW)

GENERAL TOLERANCE

- .X : ±0.35
- .XX : ±0.25
- .XXX : ±0.10
- ANGLES : ±1°



www.i-ncp.com

PART NO:
IPC B04151M xx

NAME

Pitch 0.40mm BTB MALE

DRAWING NO
IPC B04xx1M 07



SHEET 1 OF 1

UNITS: mm

SCALE: 1:1

REV. 01