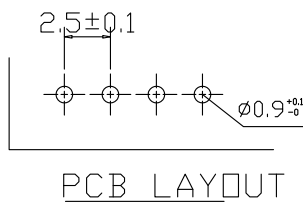
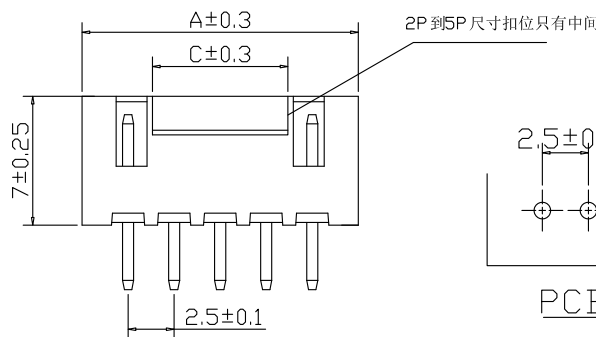
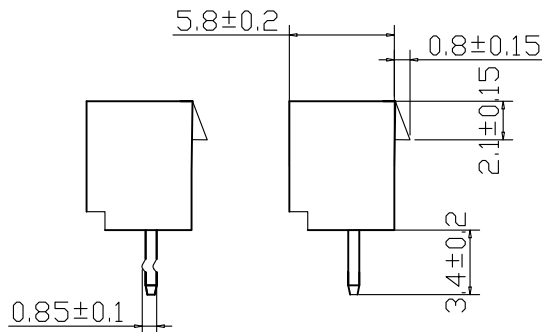
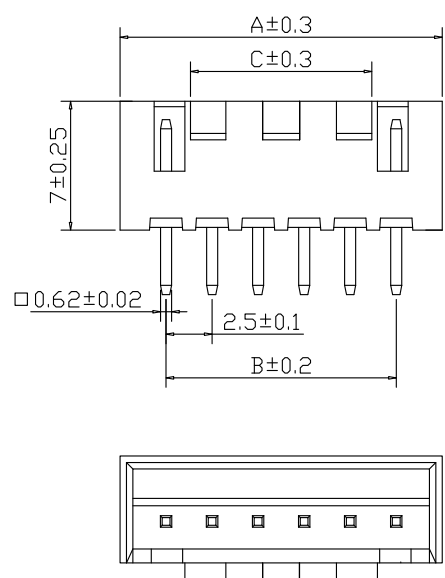


XHB连接器承认图面

| | | | | | |
|----|----|-------|-------|----|-------|
| 标记 | 处数 | 更改前内容 | 更改后内容 | 签名 | 年.月.日 |
| | | | | | |



| 孔位 | A-mm | B-mm | C-mm |
|---------|------|------|------|
| XHB-2A | 7.5 | 2.5 | 1.6 |
| XHB-3A | 10.0 | 5.0 | 2.5 |
| XHB-4A | 12.5 | 7.5 | 4.4 |
| XHB-5A | 15.0 | 10.0 | 6.9 |
| XHB-6A | 17.5 | 12.5 | 9.4 |
| XHB-7A | 20.0 | 15.0 | 11.1 |
| XHB-8A | 22.5 | 17.5 | 13.6 |
| XHB-9A | 25.0 | 20.0 | 16.1 |
| XHB-10A | 27.5 | 22.5 | 18.6 |
| XHB-11A | 30.0 | 25.0 | 21.1 |
| XHB-12A | 32.5 | 27.5 | 23.6 |
| XHB-13A | 35.0 | 30.0 | 26.1 |
| XHB-14A | 37.5 | 32.5 | 28.6 |
| XHB-15A | 40.0 | 35.0 | 31.1 |
| XHB-16A | 42.5 | 37.5 | 33.6 |

使用温度范围 (Ambient temperature Range): -25°~+85°

适用线规 (Applicable Wires): AWG 30#~22#

适用基板厚度 (Applicable PCboard thickness): 1.6mm

额定电压 (Voltage rating): 250V AC,DC

额定电流 (Current rating): 3A

接触电阻 (Contact Resistance): <0.02Ω

绝缘电阻 (Insulation Resistance): >1000MΩ

耐压 (Withstand Voltage): 1000VAC/min

材料 (Material)

1.基座: PA66 94V-0(2) 增强尼龙 米黄色

2.插针: 黄铜

| 2 | Wafer 针 | 黄铜镀锡 | N | | |
|--------|------------|---------------|----------|----------|--------------|
| 1 | Housing 基座 | PA66 94V-0(2) | 1 | White 白色 | |
| 序号 | 图号 | 名称 | 材料 | 数量 | 附注 |
| 未注公差 | | | | | |
| X.°±3° | | X.X°±5° | | | |
| >0-3 | >3-18 | >18-50 | >50-120 | | Design Units |
| ±0.12 | ±0.15 | ±0.3 | ±0.5 | MMOnly | SIZE |
| 制作 | | 审核 | 批准 | 材料 | 图号 |
| | | | | 见图解 | 品名 |
| | | | Part No. | | |
| XHB-NA | | | | | |

