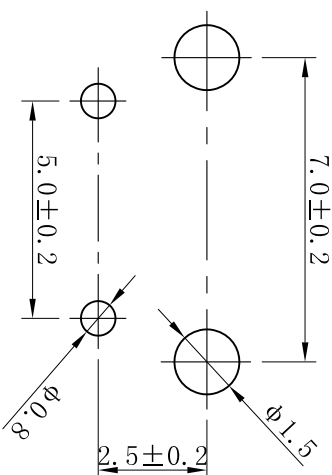
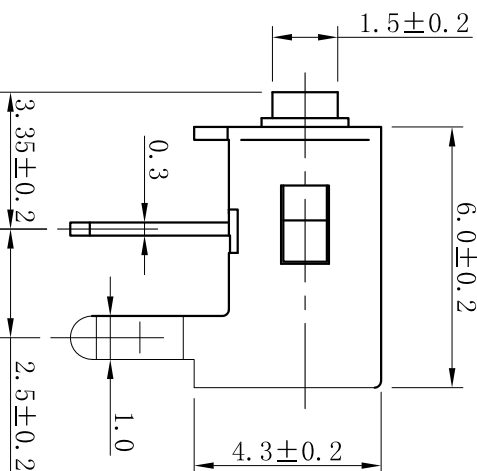


CIRCUIT DIAGRAM



P.C.B LAND DIMENSION

SPECIFICATION

1. Rating: DC 12V 50mA Max
2. Contact resistance: 100mΩ MAX
3. Insulation resistance: 100MΩ Min
4. Dielectric strength: 250VAC/min
5. Operating force: 250gf±50gf
6. Operating life: 50,000 cycles

REFERENCE DRAWING

UNSPECIFIED TOLERANCE	TOLERANCE	5	COVER (盖板)	1	COLD ROLLED STEEL	
未指定的公差	±0.5"	4	STEM (按钮)	1	PPA	
16 < L ≤ 63	±0.4	3	CONTACT FORM (弹片)	1	SUS301	Ag plating
4 < L ≤ 16	±0.3	2	HOUSING (基座)	1	PPA	
L ≤ 4	±0.2	1	TERMINAL (端子)	1	BRASS	Ag plating
			PART NAME (部件名)	QTY (数量)	MATERIAL (材料)	REMARK (备注)



版本	更新图纸	日期	版本	比例尺	日期	品名	图号
A1	更新图纸	2023.02.18	A1	1:1	2023.02.18	DS-THBP07-043CB	XXXXXXX
版本 VER	变更说明 CHANGE DESCRIPTION	日期 DATE	核准 APPROVED BY	核对 CHECKED BY	绘图 DRAWN BY	标题 TITLE	图号 DRAWING NO