

SPECIFICATION FOR APPROVAL

承 認 書

CUSTOMER

客戶名稱：

NUMBER

編號： L043

DESCRIPTION

型 号： **CD43** 系列

QUANTITY

數量： 30PCS

PART NO.

品 名： **SMD POWER INDUCTORS**

DATE

日期： 2021.09.26

CUSTOMER PART NO.

客戶料號：

NOTE

注解：

APPROVAL SIGNATURE

客戶承認簽章

APPROVAL SIGNATURE 客戶承認簽章

APPROVED BY 核 准	DRAWN BY 制 作
李 庆 辉	劳 水 花

深圳市柯爱亚电子有限公司

Shenzhen Ceaiya Electronics Co., Ltd.

地址 1: 深圳市龙华区观澜街道银星智界一期综合楼 716 号

地址 2: 广东省东莞清溪镇青滨东路 105 号力合紫荆智能制造中心 10 栋

[Http//www.szceaiya.com](http://www.szceaiya.com)

Tel: 0769-89135516

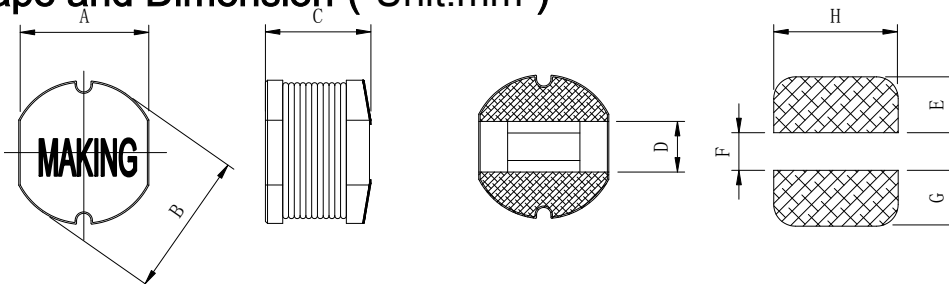
Fax: 0769-89135519



History of change

Rev.	Effective Date	Changed Contents	Change reasons	Approved By
A0	2015.04.13	New release		

1. Shape and Dimension (Unit:mm)



A	B	C	D	E	F	G	H
4.0±0.3	4.5±0.3	3.2±0.3	1.5	1.75	1.5	1.75	4.5

2. Electronic Characteristics List

Part Number	Inductance (μH)	Tolerance (±%)	DCR (Ω) (Max)	I.D.C ※ (A)	Marking	测试仪器
CD43-1R0M	1.0	20	28.0m	2.60	1R0	LCR : HIOKI3532 MICROTEST6337 DCR : HIOKI3540 DC BIAS : MICROTEST6220
CD43-1R5M	1.5	20	36.0m	2.50	1R5	
CD43-2R2M	2.2	20	42.0m	2.30	2R2	
CD43-3R3M	3.3	20	56.0m	2.10	3R3	
CD43-3R9M	3.9	20	60.0m	1.90	3R9	
CD43-4R7M	4.7	20	76.0m	1.60	4R7	
CD43-5R6M	5.6	20	83.0m	1.45	5R6	
CD43-6R8M	6.8	20	100.0m	1.35	6R8	
CD43-8R2M	8.2	20	120.0m	1.30	8R2	
CD43-100K	10	10	150.0m	1.00	100	
CD43-120K	12	10	155.0m	0.90	120	
CD43-150K	15	10	195.0m	0.80	150	
CD43-180K	18	10	230.0m	0.70	180	
CD43-220K	22	10	270.0m	0.60	220	
CD43-270K	27	10	310.0m	0.55	270	
CD43-330K	33	10	345.0m	0.50	330	
CD43-390K	39	10	400.0m	0.48	390	
CD43-470K	47	10	525.0m	0.40	470	
CD43-560K	56	10	595.0m	0.38	560	
CD43-680K	68	10	740.0m	0.33	680	
CD43-820K	82	10	880.0m	0.29	820	
CD43-101K	100	10	1.20	0.26	101	
CD43-121K	120	10	1.25	0.24	121	
CD43-151K	150	10	1.60	0.22	151	
CD43-181K	180	10	2.00	0.19	181	
CD43-221K	220	10	2.35	0.18	221	
CD43-271K	270	10	3.25	0.16	271	
CD43-331K	330	10	3.55	0.15	331	
CD43-391K	390	10	4.20	0.13	390	
CD43-471K	470	10	4.90	0.12	471	
CD43-561K	560	10	6.50	0.10	561	
CD43-681K	680	10	8.30	0.09	681	

※ This indicates the value of current when the inductance is 10% lower than its initial value at D.C superposition or D.C current when temperature rise ΔT=40℃ whichever is lower. (Ta=20℃)
 测试条件: (L≤8.2uH 用 100KHz / 0.25V; L>8.2uH 测试频率 1KHz / 0.25V.)

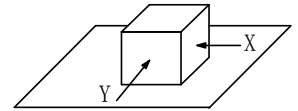
3. General Characteristics

3-1. Storage Temperature range : $-40^{\circ}\text{C} \sim +125^{\circ}\text{C}$

3-2. Operating temperature range: $-40^{\circ}\text{C} \sim +125^{\circ}\text{C}$ (Including coil's self temperature rise)

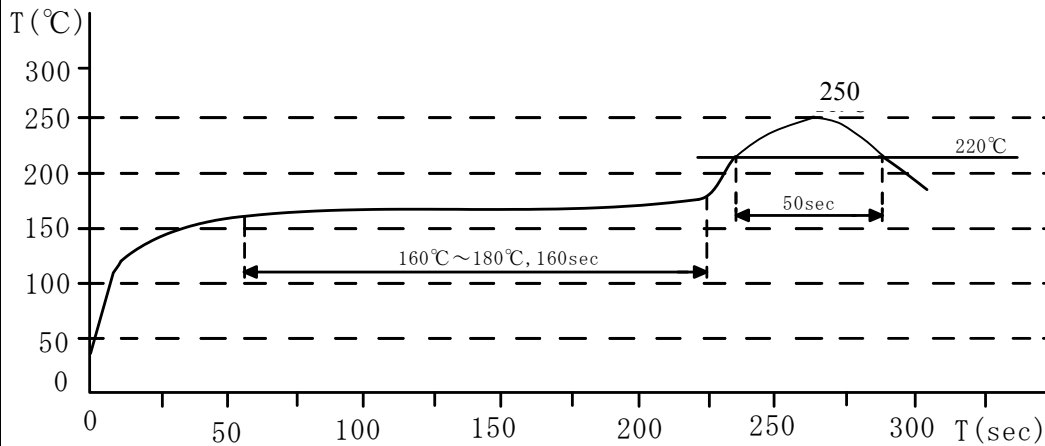
3-3. External appearance : No external defects can be found in the visual inspection.

3-4. Electrode strength : No electrode detachment should be found when the device is pushed in two directions of X and Y with the force of 10.0N for 10 ± 2 seconds after soldering between copper plate and the electrodes.
(Refer to figure at right)



3-5. Vibration test : Inductance deviation is within $\pm 3.0\%$ after 1 hour sweeping vibration in each three directions, namely, forward and backward, up and down, right and left. The frequency is $10 \sim 55 \sim 10\text{Hz}$ and the amplitude of 1 minute cycle is 1.5mm PP.

3-6. Recommended reflow condition:

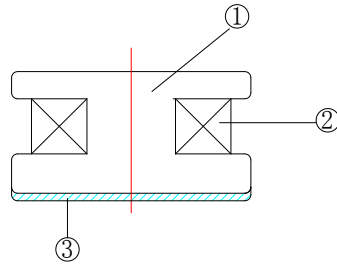


3-7. Humidity test : Inductance deviation is within $\pm 5.0\%$ after 96 ± 4 hours test under the condition of relative humidity of $90 \sim 95\%$ and temperature of $40 \pm 2^{\circ}\text{C}$, and 1 hour storage under room ambient conditions after the device is wiped with dry cloth.

LEAD-FRE



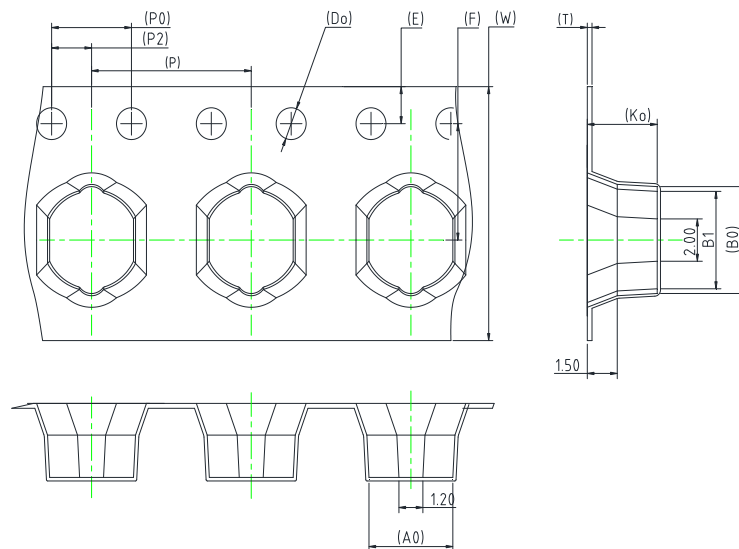
4. Construction and materials



No.	Part name	Material	Ceaiya P/N
①	Drum Core	Ni-Zn Ferrite Core	(TY,DY,MT)
②	Wire	Polyurethane enameled copper wire	3210250
③	Electrode	Cu + Sn plating	

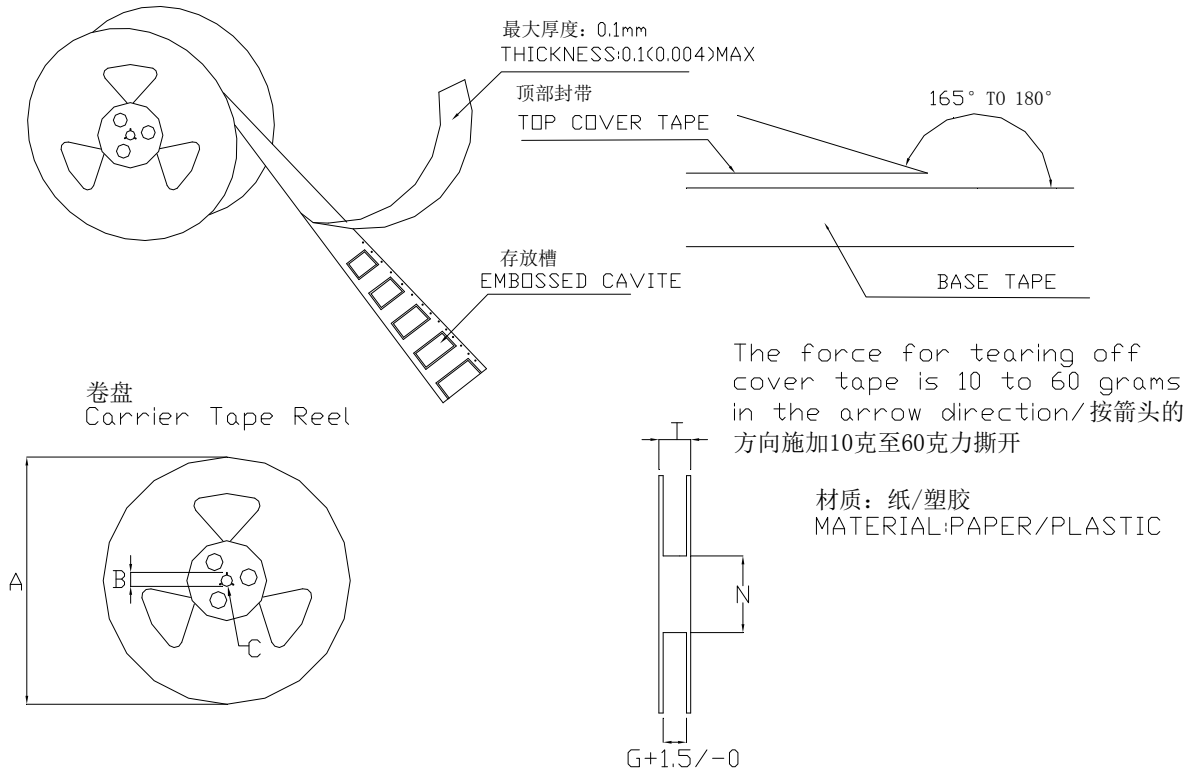
5.Packaging and Marking:

5-1.Carrier Tape Dimensions:



ITEM	W	A0	B0	K0	P	F	E	D0	B1	P0	P2	T
DIM	12.00	4.2	5.05	3.60	8.00	5.50	1.75	1.50	4.6	4.00	2.00	0.50
TOLE	+0.30 -0.10	±0.1	±0.1	±0.1	±0.1	±0.1	±0.1	+0.1	±0.1	±0.1	±0.1	±0.05

6. CARRIER REEL DIMENSIONS:



Type	A	B	C	G	N	T
12mm	330	21±0.8	13±0.4	12.4	100	16.4

7. PACKAGE SPECIFICATION:

2.0KPCS/ Reel 6.0KPCS/ Inner Box 18KPCS/ Outer Box

编带方向 , 如下图所示

