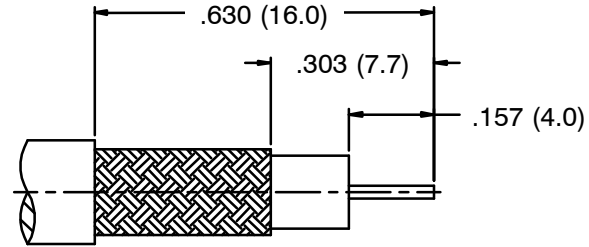


1 2 3 4 5 6 7 8

F

F



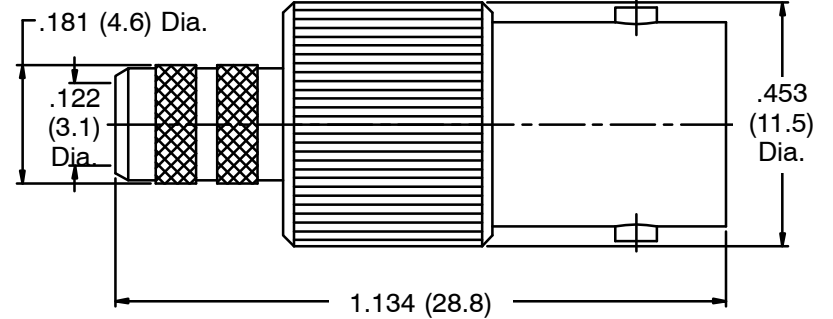
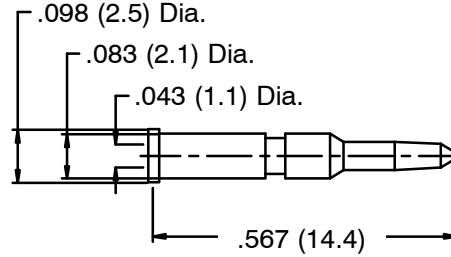
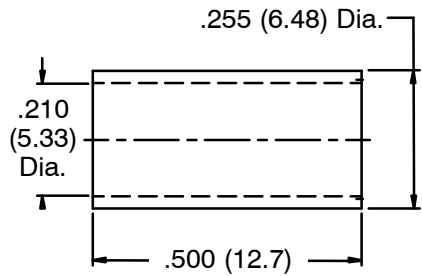
Recommended Cable Stripping Dim's

E

E

D

D



C

C

B

B

NOTES: Finish (Plating Thickness in Micro-inches)  
 1. Brass  
 2. Nickel Pl. 100 Min. Thick over Copper Pl. 50 Min. Thick  
 3. Gold Pl. 3 Min Thick over Nickel Pl. 50 Min. Thick over Copper Pl. 50 Min. Thick  
 4. TEFLON

RoHS Compliant

A

A

Part No.					<h1 style="text-align: center;">NTE Electronics</h1>									
Approved										Title				
Checked										Drawing No.				
Drawn										File No.				
Date					Date									
Date					Date									
Date					Date									

Dimensions are in Inches			
Unless Otherwise Specified Tolerances			
0.5-6	=	±0.2	
6-30	=	±0.4	
30-120	=	±0.6	
120-315	=	±1	
315-1000	=	±1.6	
1000-2000	=	±2.4	

No.	Description	Material	Finish	Q'ty	Drawing No.
5	Ferrule	Copper	Note 2	1	
4	Contact Pin	Note 1	Note 3	1	
3	Insulator	Note 4	Natural	1	
2	Body	Note 1	Note 2	1	
1	Housing	Note 1	Note 2	1	

1 2 3 4 5 6 7 8