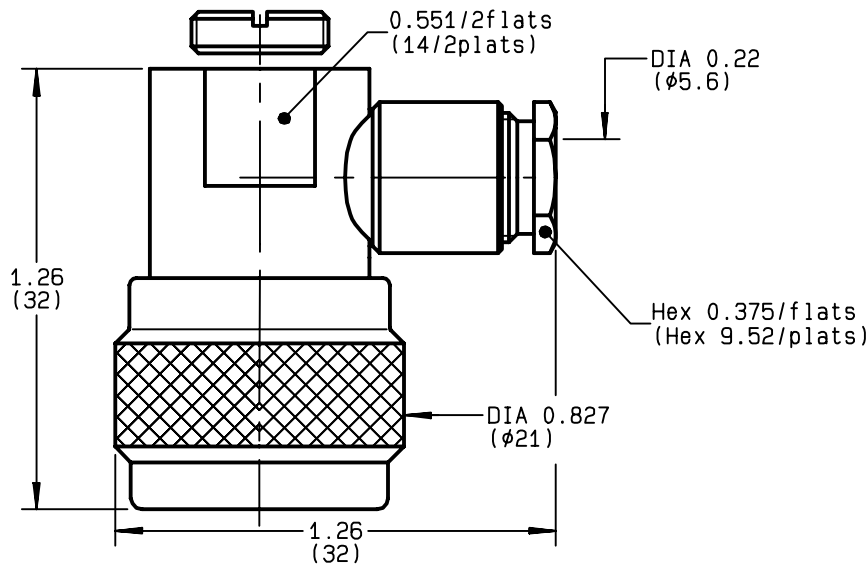


**RIGHT ANGLE PLUG CLAMP TYPE
CABLE 5/50 S+D**

R161.157.000
SERIES N



| | | |
|---------------------------------|----------------------------------|---|
| NOMINAL IMPEDANCE | 50 Ω | CABLES : KX 15 KX 23 RG 141 RG 142 RG 142 FTX RG 223 RG 400 RG 58 |
| FREQUENCY RANGE | 0-11 GHz | |
| TEMPERATURE RATING | -55/+155 °C | |
| V.S.W.R | 1.50 + x F(GHz)Maxi | |
| RF INSERTION LOSS | 0.07 √F(GHz) dB Maxi | |
| VOLTAGE RATING | 850 Veff Maxi | |
| DIELECTRIC WITHSTANDING VOLTAGE | 1500 Veff Mini | |
| INSULATION RESISTANCE | 5000 MΩMini | |
| HERMETIC SEAL | NA Atm.cm ³ /s | |
| LEAKAGE (pressurized only) | NA | |
| MECHANICAL DURABILITY | 500 Cycles | OTHERS CHARACTERISTICS CABLE RETENTION 150 N Mini CENTER CONTACT RETENTION Axial force - mating end 27 N Mini Axial force - opposite end 27 N Mini Torque NA cm.N Mini RECOMMENDED TORQUES Mating 130 cm.N Panel nut NA cm.N Clamp nut 150 cm.N |
| WEIGHT | 80 gr | |
| SPECIFICATION | | |

| CONNECTOR PARTS | MATERIALS | FINISH | (all values are given) in micrometers |
|-----------------|-----------------|------------------------|---|
| BODY | BRASS | BBR 2 | |
| OUTER CONTACT | BRASS | BBR 2 | |
| CENTER CONTACT | BRASS | GOLD 0.5 OVER NICKEL 2 | |
| INSULATOR | PTFE | - | |
| GASKET | SILICONE RUBBER | - | |
| OTHERS PIECES | BRASS | BBR 2 | |

| | | |
|-------------------------|------------------------------------|--------------------------------------|
| ISSUE 9812J01 | CREATION DATE 30/06/1993 | FILE PART-NUMBER EPC 96-07 |
|-------------------------|------------------------------------|--------------------------------------|



BONMINI

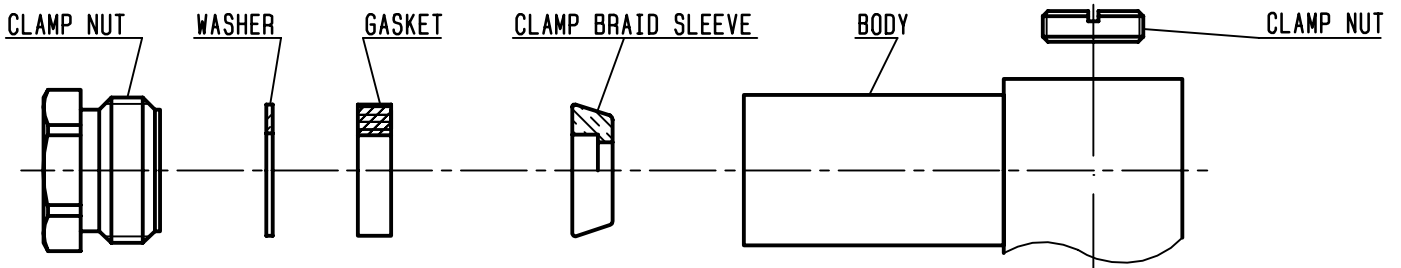
The information given here is subject to change without notice.
Design changes may be in order to improve the product .

Connect to the future



R161.157.000

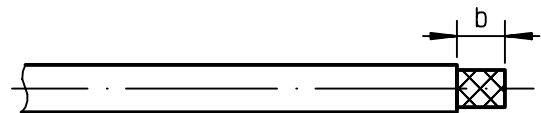
ISSUE **9812J01** SERIES **N**



①

Strip the cable .

-
-
-
-



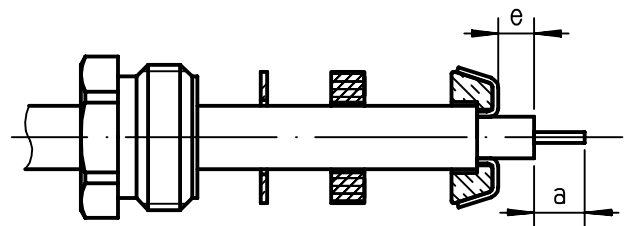
| Stripping | a | b | c | d | e |
|-----------|-------|-------|---|---|-------|
| inch | 0.138 | 0.453 | 0 | 0 | 0.276 |
| mm | 3.5 | 11.5 | | | 7 |

②

Slide the clamp nut , the washer and the gasket onto the cable .

Slide clamp braid sleeve over braid .
Fold back braid and trim off surplus braid .

Trim back dielectric as shown .



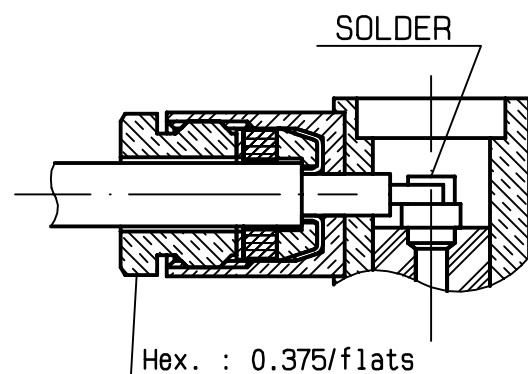
③

Screw sub-assembly into the connector body .

(recommended coupling torque 13.27 in.lb)

-

Solder center contact .



④

Screw clamp nut into the body .

-
-
-
-

