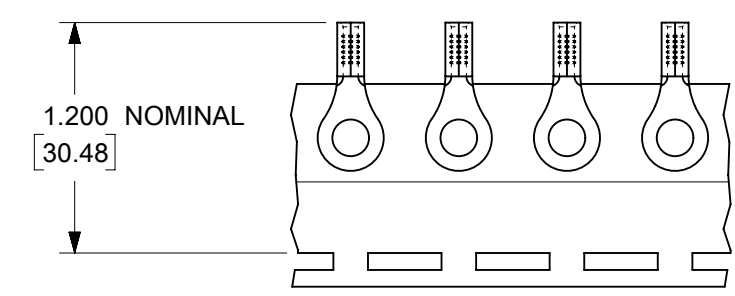
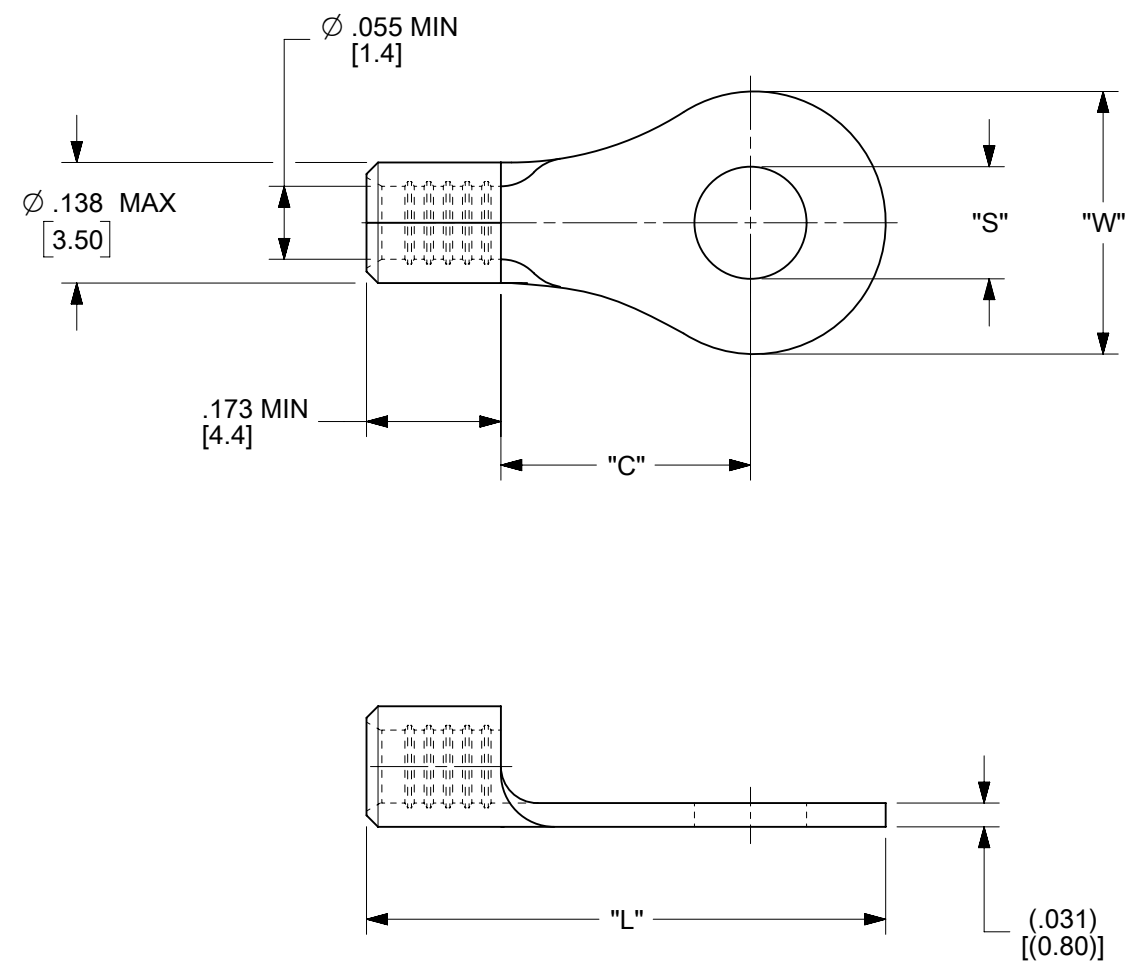


| LOOSE PIECE | | TAPE MOUNTED | | STUD SIZE | DIMENSIONS | | | |
|--------------|------------|--------------|-------------|-----------|----------------|------------|------------|------------|
| MATERIAL NO. | ENG. NO. | MATERIAL NO. | ENG. NO. | | "S" ±.007/0.18 | "W" MAX | "C" MIN | "L" MAX |
| 192030486 | A-S-122-14 | 192030005 | A-S-122-14T | 1/4" | .256/6.50 | .467/11.86 | .427/10.85 | .894/22.71 |
| 192030483 | A-S-132-06 | 192030011 | A-S-132-06T | 06 | .146/3.71 | .270/6.86 | .238/6.05 | .611/15.52 |
| 192030485 | A-S-132-08 | 192030014 | A-S-132-08T | 08 | .169/4.29 | .270/6.86 | .238/6.05 | .611/15.52 |
| 192030387 | A-S-133-10 | 192030016 | A-S-133-10T | 10 | .209/5.31 | .325/8.26 | .270/6.86 | .666/16.92 |



PARTS ON TAPE

- NOTES:
1. MATERIAL: STEEL
 2. WIRE SIZE: 22-18 AWG (0.25-1.5 MM²)
 3. FINISH: NICKEL PLATED WITH OPTIONAL COPPER FLASH UNDERPLATING, IS ALLOWED FOR IMPROVED ADHESION.
 4. PARTS ARE ROHS COMPLIANT.
 5. AMBIENT OPERATING TEMPERATURE UP TO 900 °F (483 °C).

C1

| | | | | | | | | | |
|---|--|-------|--|--------------------------|---------|--------|-----------------|----------------|----------|
| THIS DRAWING CONTAINS INFORMATION THAT IS PROPRIETARY TO MOLEX ELECTRONIC TECHNOLOGIES, LLC AND SHOULD NOT BE USED WITHOUT WRITTEN PERMISSION | | | | | | | | | |
| FUNCTIONAL SYMBOLS | DIMENSION UNITS | SCALE | CURRENT REV DESC: REMASTERED IN ECTR AND UPDATED NOTE | | | | | | |
| | IN/MM | 4:1 | <p>EC NO: 708789 DRWN: PAWANC 2022/05/12 CHKD: DMYRICK 2022/06/01 APPR: JMACNEIL 2022/06/02</p> <p>INITIAL REVISION: DRWN: EHILE 2006/09/22 APPR: JMACNEIL 2006/09/22</p> | | | | | | |
| GENERAL TOLERANCES (UNLESS SPECIFIED) | | | | | | | | | |
| | MM | INCH | | | | | | | |
| 4 PLACES | ± | ± | | | | | | | |
| 3 PLACES | ± | ± | | | | | | | |
| DIVISIONAL SYMBOLS | 2 PLACES | ± | ± | PRODUCT CUSTOMER DRAWING | | | DOCUMENT NUMBER | | |
| | 1 PLACE | ± | ± | SD-19203-036 | | | DOC TYPE | DOC PART | REVISION |
| | 0 PLACES | ± | ± | PSD 001 C1 | | | | | |
| | ANGULAR TOL | ± | ° | MATERIAL NUMBER | | | CUSTOMER | | |
| | DRAFT WHERE APPLICABLE MUST REMAIN WITHIN DIMENSIONS | | | THIRD ANGLE PROJECTION | DRAWING | SERIES | SHEET NUMBER | | |
| | | | | | B-SIZE | 19203 | SEE CHART | GENERAL MARKET | 1 OF 1 |