

RPTC

TEMPEST/COTS AC EMI POWER LINE FILTER

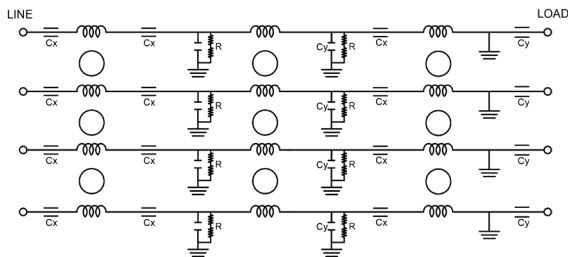
FEATURES

- » Rated currents include **10A, 30A, 60A, 100A, and 225A**
 - » Multi Stage Line Filter
 - » Available with **S** (studs)
 - » Agency Approved to RoHS
- Y-cap value can be adjusted to fit specification

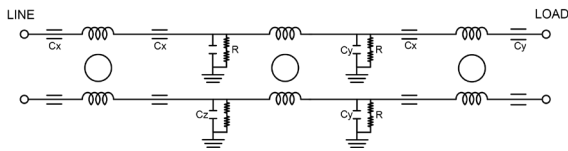


ELECTRICAL SCHEMATIC

RPTC2001/RPTC2004/RPTC2012



RPTC2002/RPTC2003/RPTC2010/RPTC2011



HOW TO ORDER

RPTC2XXX- Y - Z

Z = TERMINAL (-T)
X = RATED CURRENT

RPTC2XXX=FILTER SERIES

NOTE: USE ANY COMBINATION OF -X (AMPS) WITH ANY -Y RATINGS
E.G. **RPTC2001-225** (225 AMPS)

For **X** and **Y** options see product specification table.

SPECIFICATIONS

OPERATING FREQUENCY	47/63 Hz
MAX. OPERATING VOLTAGE	RPTC2001 480 VAC +10% RPTC2002 300 VAC +10% RPTC2003 300 VAC +10% RPTC2004 480 VAC +10% RPTC2010 300 VAC +10% RPTC2011 300 VAC +10% RPTC2012 480 VAC +10%
AMBIENT TEMPERATURE	-25 TO 70°C
CLIMATIC CATEGORY	25/100/21
TERMINALS (-T)	STUDS: 10A (10-32), 30-100A (1/4-20), 225A (1/2-13)

TYP. WEIGHT, LBS (KG) 3.0(1.4) - 150.0 (68.0)

SINGLE PHASE	RPTC2002, RPTC2003 RPTC2010, RPTC2011
3-PHASE WYE	RPTC2001, RPTC2004 RPTC2012

HIPOT RATINGS

LINE TO GROUND 1500 VDC

TYPICAL APPLICATIONS

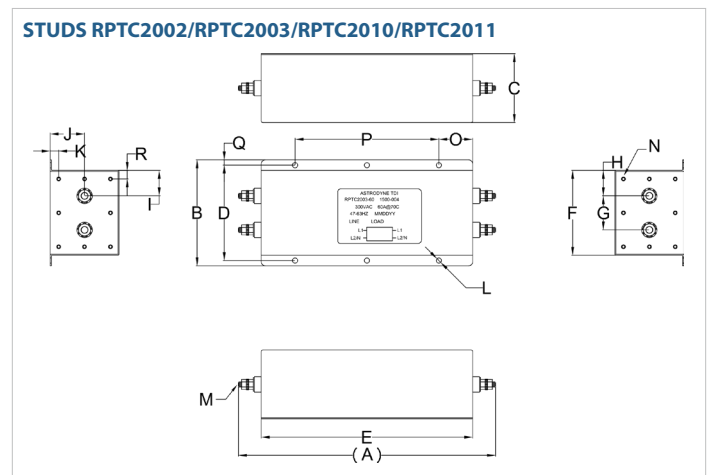
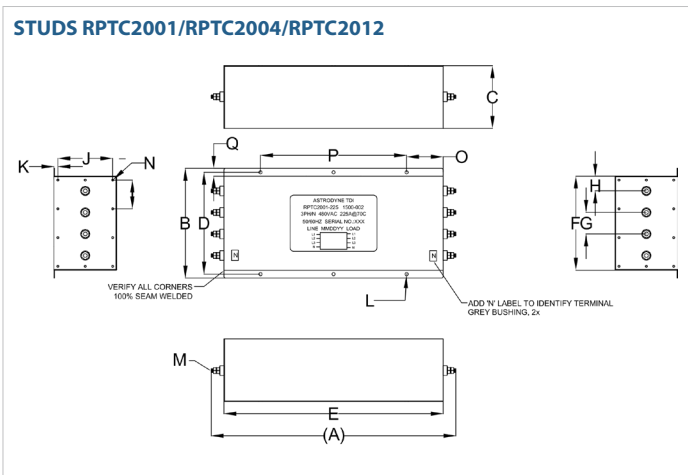
- ✓ TEMPEST/Mil-461/DO-160

RPTC

TEMPEST/COTS AC 3-PHASE WYE EMI POWER LINE FILTER

MODEL NO.	RATED CURRENT, A @ 40° C	TERMINAL OPTIONS			MAX. DIMENSIONS" (MM)		
		(QD) INPUT/ OUTPUT	(W) INPUT/ OUTPUT	(S) INPUT/ OUTPUT	WIDTH	(LENGTH)	HEIGHT
RPTC2001-225	225			✓	14.00"(356)	31.25"(794)	8.00"(203)
RPTC2002-10	10			✓	4.50"(114)	9.81"(249)	2.00"(51)
RPTC2003-60	60			✓	5.00"(127)	12.16"(309)	3.25"(83)
RPTC2004-100	100			✓	8.50"(216)	20.71"(526)	6.00"(152)
RPTC2010-30	30			✓	5.00"(127)	12.15"(309)	3.25"(83)
RPTC2011-100	100			✓	8.50"(216)	19.97"(507)	6.00"(152)
RPTC2012-60	60			✓	8.50"(216)	20.71"(526)	6.00"(152)

RPTC MECHANICAL OUTLINES (MM)



RPTC

TEMPEST/COTS AC 3-PHASE **WYE** EMI POWER LINE FILTER

SERIES	(A)	B	C	D	E	F	G	H	I	J	K	L	M	N	O	P	Q	R
STUDS (RPTC2001)	31.25" (794)	14.00" (356)	8.00" (203)	13.00" (330)	28.00" (711)	12.00" (305)	2.80" (71)	1.88" (48)	4.60" (117)	4.00" (102)	0.50" (13)	0.20" (5)	1/2-13 STUD, 8x	INSERT, 10-32, 20x	4.66" (118)	18.66" (474)	0.50" (13)	N/A
STUDS (RPTC2002)	9.81" (249)	4.50" (114)	2.00" (51)	4.00" (102)	8.00" (203)	3.50" (89)	1.50" (38)	1.00" (25)	1.00" (25)	1.00" (25)	0.40" (10)	Ø0.20", 6x (Ø5.2, 6x)	STUD, 10-32, 4x	INSERT, 8-32, 12x	1.60" (41)	4.80" (122)	0.25" (6)	0.40" (10)
STUDS (RPTC2003)	12.16" (309)	5.00" (127)	3.25" (83)	4.50" (114)	10.00" (254)	4.00" (102)	1.61" (41)	1.20" (30)	1.20" (30)	1.63" (41)	0.40" (10)	Ø0.24", 6x (Ø6.2, 6x)	STUD, 1/4-20, 4x	INSERTS, 8-32, 16x	1.60" (41)	6.80" (173)	0.25" (6)	N/A
STUDS (RPTC2004)	20.71" (526)	8.50" (216)	6.00" (152)	3.81" (97)	18.00" (457)	7.00" (178)	1.46" (37)	1.30" (33)	3.00" (76)	3.00" (76)	0.50" (13)	Ø0.24", 6x (Ø6.2, 6x)	1/2-13 STUD, 8x	INSERT, 10-32, 20x	3.00" (76)	12.00" (305)	0.38" (10)	N/A
STUDS (RPTC2010)	12.15" (309)	5.00" (127)	3.25" (83)	4.50" (114)	10.00" (254)	4.00" (102)	1.61" (41)	1.20" (30)	1.20" (30)	1.63" (41)	0.40" (10)	Ø0.24", 6x (Ø6.2, 6x)	STUD, 1/4-20, 4x	INSERTS, 8-32, 16x	1.60" (41)	6.80" (173)	0.25" (6)	N/A
STUDS (RPTC2011)	19.97" (507)	8.50" (216)	6.00" (152)	7.75" (197)	18.00" (457)	7.00" (178)	1.46" (37)	2.76" (70)	2.76" (70)	3.00" (76)	0.50" (13)	Ø0.24", 6x (Ø6.2, 6x)	STUD, 1/4-20, 4x	INSERTS, 8-32, 16x	3.00" (76)	12.00" (305)	0.38" (10)	N/A
STUDS (RPTC2012)	20.71" (526)	8.50" (216)	6.00" (152)	3.81" (97)	18.00" (457)	7.00" (178)	1.46" (37)	1.30" (33)	3.00" (76)	3.00" (76)	0.50" (13)	Ø0.24", 6x (Ø6.2, 6x)	1/2-13 STUD, 8x	INSERT, 10-32, 20x	3.00" (76)	12.00" (305)	0.38" (10)	N/A

TYPICAL TOLERANCE: +/-0.02" (0.50MM)

CONTACT FACTORY FOR TYPICAL INSERTION LOSS, dB (50/50 Ohm)