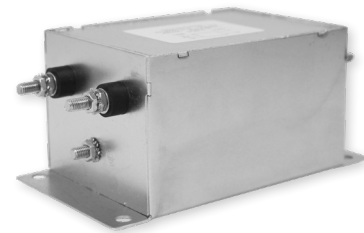


# RP690

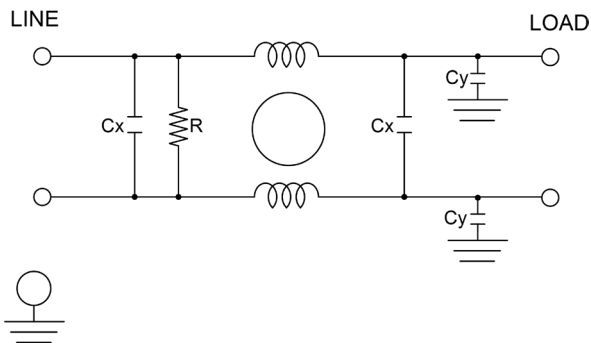
## HIGH VOLTAGE/HIGH CURRENT **DC** POWER LINE FILTER, 1200VDC

### FEATURES

- » Rated currents include **50A, 100A, 200A, 300A, and 500A**
- » Single Stage Line Filter
- » Available with **W** (wires), **S** (studs) and **C** (connectors) option
- » High Voltage/High Current Design
- » Agency Approved to UL1283 / 60929, CSA C22.2, EN 60939
- » Y-cap value can be adjusted to fit specification

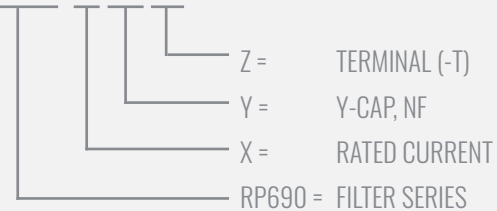


### ELECTRICAL SCHEMATIC



### HOW TO ORDER

RP690-X-Y-Z



**NOTE:** USE ANY COMBINATION OF -X (AMPS) WITH ANY -Y RATINGS

E.G. **RP690-50-100-S** (50AMPS WITH 100 NF YCAP)

For **X**, **Y**, and **Z** options see product specification table.

### SPECIFICATIONS

<b>MAX. OPERATING VOLTAGE</b>	1200VDC +10%
<b>AMBIENT TEMPERATURE</b>	-25 TO 55°C
<b>CLIMATIC CATEGORY</b>	25/100/21
<b>TERMINALS (-T)</b>	WIRE LEADS
	STUDS 50A (M6),
	100-200A (M10),
	200-300A (M12),
	500A(DUAL M12)
<b>TYP. WEIGHT, LBS (KG)</b>	7.0 - 27.0 (3.17 - 12.25)

### HIPOT RATINGS

<b>LINE TO GROUND</b>	4700 VDC
-----------------------	----------

### TYPICAL APPLICATIONS

- ✓ DC fast charger
- ✓ Induction charging
- ✓ Industrial chargers
- ✓ Solar

# RP690

## HIGH VOLTAGE/HIGH CURRENT **DC** POWER LINE FILTER, 1200VDC

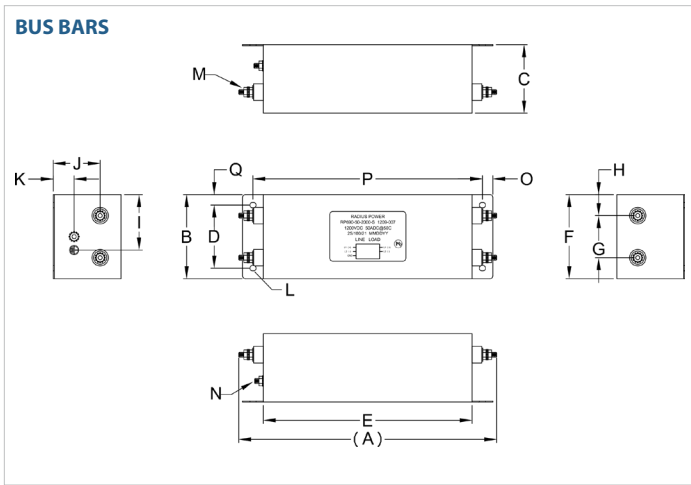
MODEL NO.	RATED CURRENT, A @ 40° C	Y-CAP, nF	TERMINAL OPTIONS			MAX. DIMENSIONS" (MM)		
			(W) INPUT/OUTPUT	(S) INPUT/OUTPUT	(C) INPUT/OUTPUT	WIDTH	(LENGTH)	HEIGHT
RP690-50-100-C	50	100			✓	*	*	*
RP690-50-100-S	50	100		✓		4.00"(102)	12.36"(314)	3.25"(83)
RP690-50-100-W	50	100	✓			*	*	*
RP690-50-1000-C	50	1000			✓	*	*	*
RP690-50-1000-S	50	1000		✓		4.00"(102)	12.36"(314)	3.25"(83)
RP690-50-1000-W	50	1000	✓			*	*	*
RP690-50-2000-C	50	2000			✓	*	*	*
RP690-50-2000-S	50	2000		✓		4.00"(102)	12.36"(314)	3.25"(83)
RP690-50-2000-W	50	2000	✓			*	*	*
RP690-100-100-C	100	100			✓	*	*	*
RP690-100-100-S	100	100		✓		4.00"(102)	12.36"(314)	3.25"(83)
RP690-100-100-W	100	100	✓			*	*	*
RP690-100-1000-C	100	1000			✓	*	*	*
RP690-100-1000-S	100	1000		✓		4.00"(102)	12.36"(314)	3.25"(83)
RP690-100-1000-W	100	1000	✓			*	*	*
RP690-100-2000-C	100	2000			✓	*	*	*
RP690-100-2000-S	100	2000		✓		4.00"(102)	12.36"(314)	3.25"(83)
RP690-100-2000-W	100	2000	✓			*	*	*
RP690-200-100-C	200	100			✓	*	*	*
RP690-200-100-S	200	100		✓		4.00"(102)	12.36"(314)	3.25"(83)
RP690-200-100-W	200	100	✓			*	*	*
RP690-200-1000-C	200	1000			✓	*	*	*
RP690-200-1000-S	200	1000		✓		4.00"(102)	12.36"(314)	3.25"(83)
RP690-200-1000-W	200	1000	✓			*	*	*
RP690-200-2000-C	200	2000			✓	*	*	*
RP690-200-2000-S	200	2000		✓		4.00"(102)	12.36"(314)	3.25"(83)
RP690-200-2000-W	200	2000	✓			*	*	*
RP690-300-100-S	300	100		✓		6.40"(163)	16.57"(421)	4.50"(114)
RP690-300-1000-S	300	1000		✓		6.40"(163)	16.57"(421)	4.50"(114)
RP690-300-2000-S	300	2000		✓		6.40"(163)	16.57"(421)	4.50"(114)
RP690-500-100-S	500	100		✓		6.40"(163)	16.57"(421)	4.50"(114)
RP690-500-1000-S	500	1000		✓		6.40"(163)	16.57"(421)	4.50"(114)
RP690-500-2000-S	500	2000		✓		6.40"(163)	16.57"(421)	4.50"(114)

\*Contact factory for dimensions.

# RP690

## HIGH VOLTAGE/HIGH CURRENT **DC** POWER LINE FILTER, 1200VDC

### RP690 MECHANICAL OUTLINES (MM)



SERIES	(A)	B	C	D	E	F	G	H	I	J	K	L	M	N	O	P	Q
<b>STUDS (50/100/200A)</b>	12.36" (314)	4.00" (102)	3.25" (83)	3.00" (76)	10.00" (254)	4.00" (102)	2.00" (51)	1.00" (25)	2.64" (67)	2.25" (57)	1.00" (25)	Ø0.30"x0.24",4x (Ø 7.7x6.3, 4x)	STUD. M6, 6x	STUD, GND, M6	0.50" (13)	11.00" (279)	0.50" (13)
<b>STUDS (300/500A)</b>	16.57" (421)	6.40" (163)	4.50" (114)	6.40" (163)	13.00" (330)	6.40" (163)	3.30" (84)	1.65" (42)	3.30" (84)	3.50" (89)	1.00" (25)	Ø 0.59"x0.25",4x (Ø 15.2x6.5, 4x)	STUD M12, 4x	STUD GND, M10	0.53" (14)	14.69" (373)	0.64" (16)

TYPICAL TOLERANCE: +/-0.02" (0.50MM)

### TYPICAL INSERTION LOSS, dB (50/50 Ohm)

Amps	Freq (MHz)	Insertion Loss (dB)				
		0.15	0.5	1.0	10	30
50	CM (dB)	16	28	36	45	50
	DM (dB)	32	60	60	50	50
100	CM (dB)	16	28	36	45	50
	DM (dB)	32	60	60	50	50
200	CM (dB)	16	28	36	45	50
	DM (dB)	32	60	60	50	50
300	CM (dB)	16	28	36	45	50
	DM (dB)	32	60	60	50	50
500	CM (dB)	16	28	36	45	50
	DM (dB)	32	60	60	50	50