

Crystal Unit

HC-49SMD



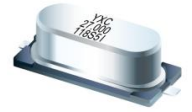
Applications

- Industrial Control Consumers.

Features

- Dimensions: 11.5 x 4.80 x 3.8mm.
- Standard Frequency: 3.2768~64MHz

- Surface mount type crystal units.
- A great number of standard frequencies.



Specifications (规格参数)

Item	Symbol	Specifications
Nominal Frequency Range (额定频率范围)	f_nom	3.2768~64MHz
Vibration Mode (震动模式)	-	AT Fundamental
Load Capacitance (负载电容)	CL	12pF, 20pF, or specify
Frequency Tolerance (频率偏差) (at 25°C)	f_tol	±10ppm, ±20ppm, or specify
Frequency Versus Temperature Characteristics (频率-温度特性)	f_tem	±20ppm, or specify
Operating Temperature (工作温度)	T_use	-20~+70°C, or specify
Storage Temperature (储存温度)	T_stg	-40~+85°C
Shunt Capacitance (静态电容)	C0	7pF Max.
Level of Drive (激励电平)	DL	1~500μW Max.(100μW typical)
Aging (老化) (at 25°C)	f_age	±3ppm/year Max.

Equivalent Series Resistance (等效串联电阻(ESR))

HC-49SMD			
3.2768 ~ 4MHz	180 Ω Max.	6 ~ 7MHz	80 Ω Max.
4 ~ 5MHz	120 Ω Max.	7 ~ 10MHz	60 Ω Max.
5 ~ 6 MHz	100 Ω Max.	10 ~ 30MHz	40 Ω Max.

Dimensions and Recommended land pattern (外观尺寸及推荐焊盘)

Dimensions (Unit: mm)	Recommended land pattern(Unit: mm)
<p>Side View dimensions: 11.4 ± 0.05, 10.6 MAX, 0.3 ± 0.1, 4.35 ± 0.5, 3.8 ± 0.5, 3.3 ± 0.3, 3.8 ± 0.3, 1.0 MAX.</p> <p>Bottom View dimensions: 0.5 ± 0.2, 0.5 ± 0.2, 0.8 ± 0.2, 4.8 MAX, 4.5 MAX, 4.88 MAX, 4.5 MAX, 12.7 ± 0.5.</p>	<p>Recommended land pattern dimensions: 5.5, 4.0, 5.5, 2.0.</p>