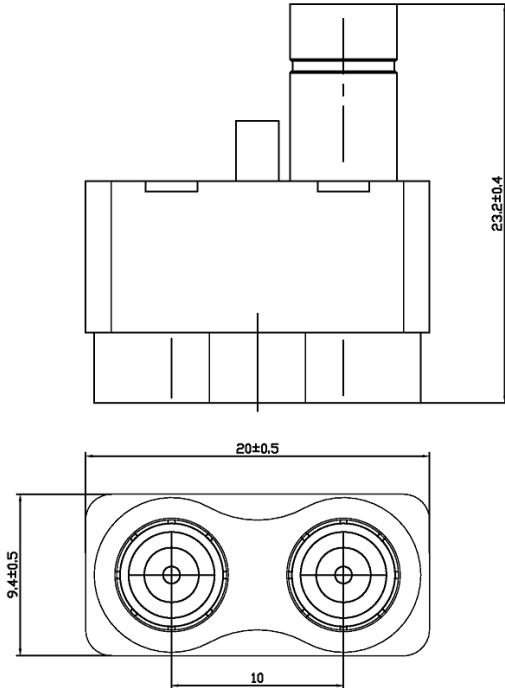


'U' LINK FEMALE-FEMALE WITH TEST PORT

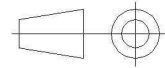
R214.798.703

PITCH 10 PACK 50

Series : **HDC 43**



mm.



COMPONENTS	MATERIALS	PLATING (µm)
BODY	ZAMAK	NICKEL
CENTER CONTACT	PHOSPHOR BRONZE	GOLD
OUTER CONTACT	BRASS	GOLD
INSULATOR	PTFE	
GASKET	-	-
OTHERS PARTS	-	-
-	-	-
-	-	-

Issue : 1037 D

In the effort to improve our products, we reserve the right to make changes judged to be necessary.



'U' LINK FEMALE-FEMALE WITH TEST PORT

R214.798.703

PITCH 10 PACK 50

Series : **HDC 43**

PACKAGING

SPECIFICATION

Standard	Unit	Other
50	'W' option	Contact us

ELECTRICAL CHARACTERISTICS

ENVIRONMENTAL

Impedance		75 Ω
Frequency		0-3 GHz
VSWR	NA +	0,0000 x F(GHz) Maxi
Insertion loss		NA √F(GHz) dB Maxi
RF leakage	- (NA - F(GHz)) dB Maxi
Voltage rating		500 Veff Maxi
Dielectric withstanding voltage		1500 Veff mini
Insulation resistance		5000 MΩ mini

Operating temperature	-40/+100 ° C
Hermetic seal	NA Atm.cm3/s
Panel leakage	NA

OTHER CHARACTERISTICS

Assembly instruction

Others :

MECHANICAL CHARACTERISTICS

Center contact retention	
Axial force – Mating end	22 N mini
Axial force – Opposite end	NA N mini
Torque	NA N.cm mini
Recommended torque	
Mating	NA N.cm
Panel nut	NA N.cm
Mating life	0 Cycles mini
Weight	0,0000 g

Issue : 1037 D

In the effort to improve our products, we reserve the right to make changes judged to be necessary.

