

1

2

3

4

A

A

B

B

C

C

D

D

E

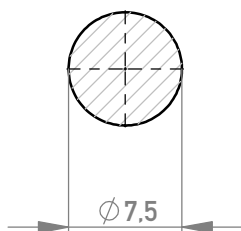
E

F

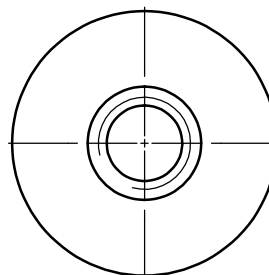
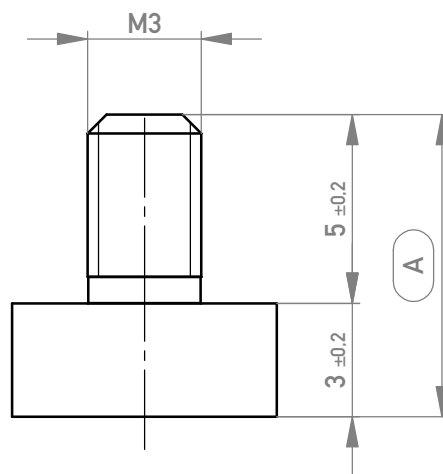
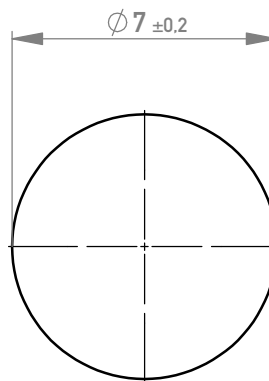
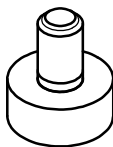
Weitergabe sowie Vervielfältigung dieses Dokuments, Verwertung und Mitteilung seines Inhalts sind verboten, soweit nicht ausdrücklich gestattet. Zuwiderhandlungen verpflichten zu Schadenersatz. Alle Rechte für den Fall der Patent-, Gebrauchsmuster- oder Geschmacksmustererlangung vorbehalten. The reproduction, distribution and utilization of this document as well as the communication of its contents to others without express authorization is prohibited. Offenders will be held liable for the payment of damages. All rights reserved in the event of the grant of a patent, utility model or design.

Layout - Vorschlag
PCB - Layout proposal

M 2:1
scale 2:1



M 2:1
scale 2:1



5-10µm Sn matt über 1-3µm Ni
5-10µm sn matt over 1-3µm ni

Oberfläche A / plating A

Dimension no.				Tolerances		Scale 5:1		Tool-no.	
				ISO 8015		Material: CuZn39Pb3		CuZn39Pb3	
				All Dimensions in mm		<p>PowerElement SMD male thread M3</p> <p>225850-E</p>			
				Date	Name				
				Created 04.07.2016	Fuchs				
				Checked 19.07.2016	Koch				
				Approved 13.04.2023	Koch				
b1	TE Migration	13.05.2023	Admin						
Index	Modification Nr.	Date	Name						
						Class		POWELM	
								C (1/1) A4	