

1

2

3

4

A

A

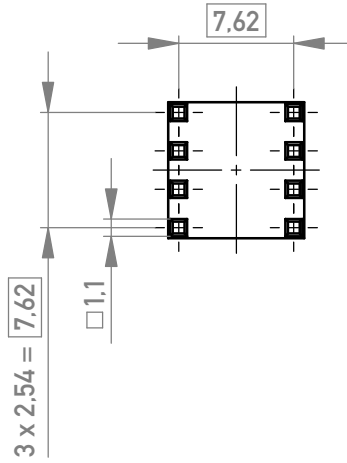
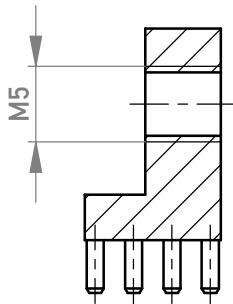
B

B

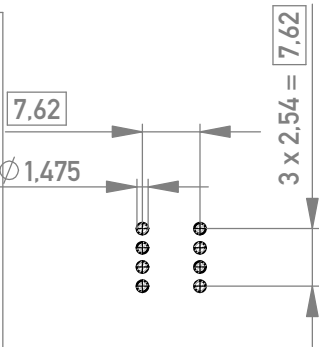
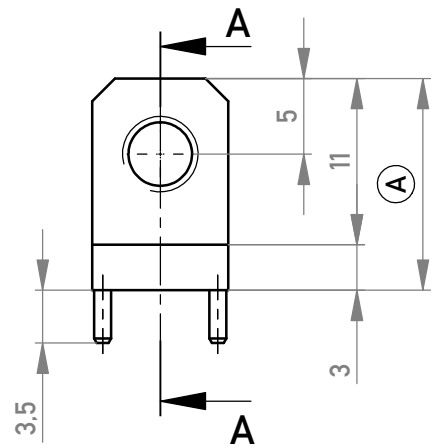
C

C

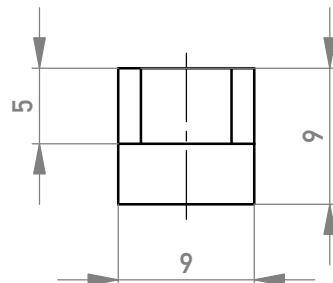
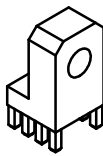
Schnitt A-A
cross section A-A



Layout - Vorschlag
PCB - Layout proposal
M / scale 2:1



M / scale 1:1



2-6µm Sn matt über 2-4µm Cu
2-6µm sn matt over 2-4µm cu

(A) Oberfläche / plating

Weitergabe sowie Vervielfältigung dieses Dokuments, Verwertung und Mitteilung seines Inhalts sind verboten, soweit nicht ausdrücklich gestattet. Zuwiderhandlungen verpflichten zu Schadenersatz. Alle Rechte für den Fall der Patent-, Gebrauchsmuster- oder Geschmacksmusterertragung vorbehalten. The reproduction, distribution and utilization of this document as well as the communication of its contents to others without express authorization is prohibited. Offenders will be held liable for the payment of damages. All rights reserved in the event of the grant of a patent, utility model or design.

Dimension no.	Tolerances		Scale 2:1		Tool-no.	
	ISO 8015		Material CuZn39Pb3		CuZn39Pb3	
	Date	Name		PowerElement angled two row population M5		
Created	12.10.2016	Fuchs				
Checked	14.07.2020	Koch				
Approved	14.07.2020	Koch				
b1	TE Migration	13.05.2023	Admin		C (1/1)	
Index	Modification Nr.	Date	Name		A4	

TE Connectivity

Class POWELM

225713-E

225713-E

C (1/1)

A4

F

Die deutsche Version dieser Zeichnung dient nur zur Erleichterung der Handhabung. Bei Abweichungen von dem englischen Original gilt das englische Original.
The german version of this drawing has been offered for convenience only and may deviate from the english original.
In case of any deviation the English version shall prevail.