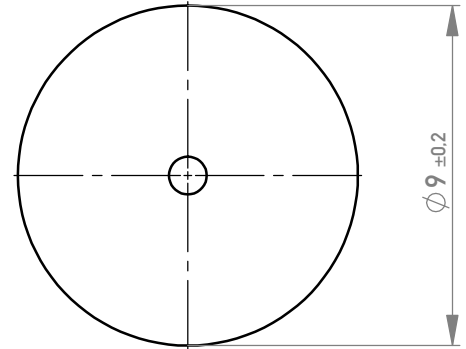
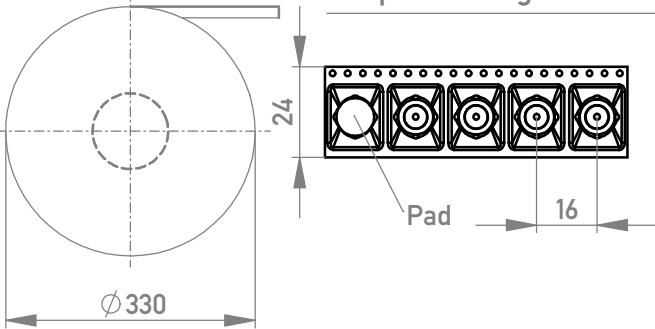
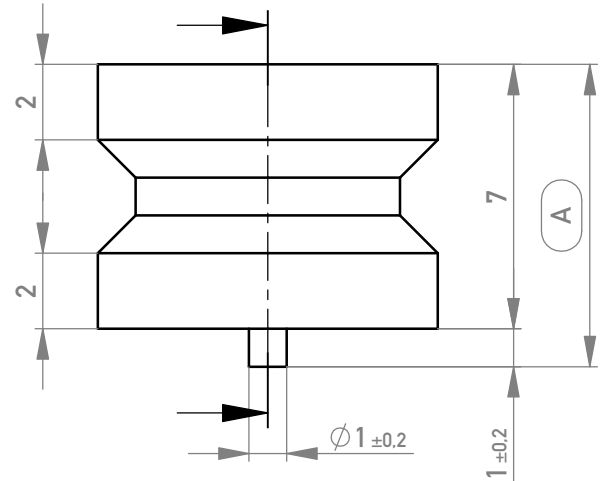
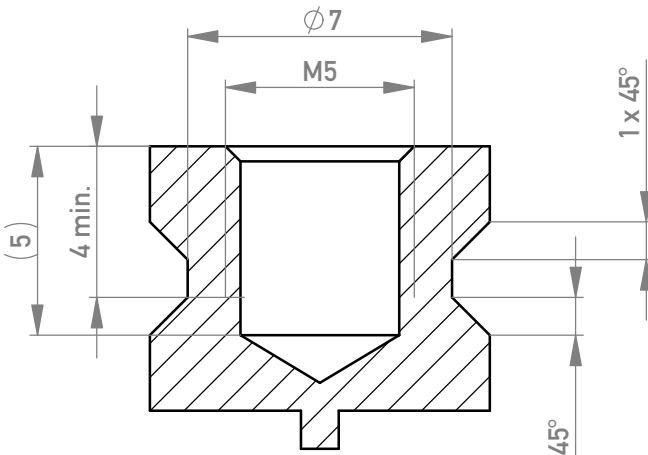


Verpackt im Gurt in Anlehnung an DIN IEC 60286-3  
*tape on reel packaging according to DIN IEC 60286-3*  
 Verpackungseinheit: 430 Stück  
*packaging unit: 430 pcs*

Abspulrichtung - Reel off direction

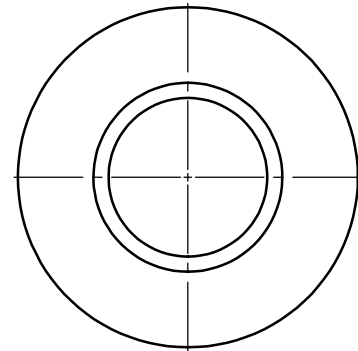
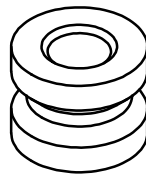
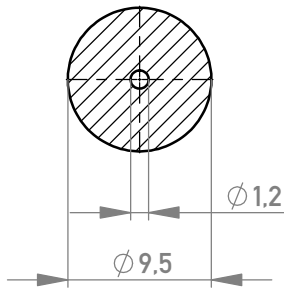


Schnitt A-A /  
*cross section A-A*



Layout - Vorschlag  
*PCB - Layout proposal*  
 M 2:1  
*scale 2:1*

M 2:1 / scale 2:1



5-10µm Sn matt über 1-3µm Ni /  
*5-10µm sn matt over 1-3µm ni*

Oberfläche (A) / plating (A)

Weitergabe sowie Vervielfältigung dieses Dokuments, Verwertung und Mitteilung seines Inhalts sind  
 verboten, soweit nicht ausdrücklich gestattet. Zuwiderhandlungen verpflichten zu Schadenersatz.  
 Alle Rechte für den Fall der Patent-, Gebrauchsmuster- oder Geschmacksmustererhaltung vorbehalten.  
 The reproduction, distribution and utilization of this document as well as the communication  
 of its contents to others without express authorization is prohibited. Offenders will be held liable for the  
 payment of damages. All rights reserved in the event of the grant of a patent, utility model or design.

Die deutsche Version dieser Zeichnung dient nur zur Erleichterung der  
 Handhabung. Bei Abweichungen von dem englischen Original gilt das  
 englische Original.  
 The german version of this drawing has been offered for convenience only  
 and may deviate from the english original.  
 In case of any deviation the English version shall prevail.

Dimension no.		Tolerances ISO 2768-mH ISO 8015		Scale 5:1	Material CuZn39Pb3	Tool-no. CuZn39Pb3
		Date	Name	<b>PowerElement SMD</b> <b>female thread M5 with peg</b>  <b>225870-E</b>		
	Created	23.11.2015	Fuchs			
	Checked	05.09.2016	Koch			
	Approved	19.05.2020	Semilia			
b1	TE Migration	13.05.2023	Admin	<b>TE</b> TE Connectivity		
Index	Modification Nr.	Date	Name			

<b>TE</b> TE Connectivity		
Class	POWELM	

C (1/1)	
A4	