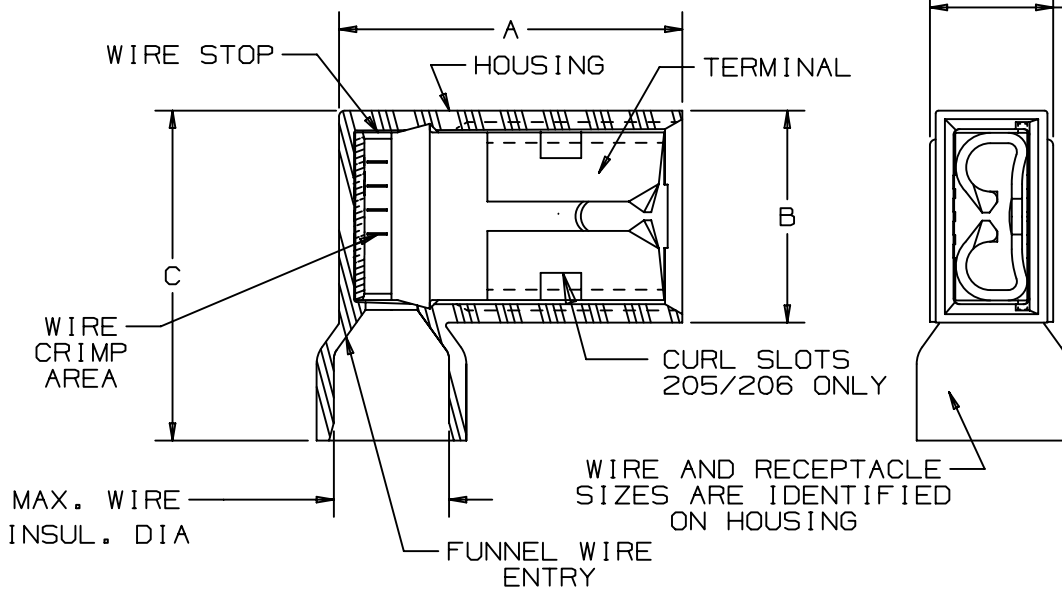


THIS COPY IS PROVIDED ON A RESTRICTED BASIS AND IS NOT TO BE USED IN ANY WAY DETRIMENTAL TO THE INTERESTS OF PANDUIT CORP.



NOTES:

- UL LISTED AND CSA CERTIFIED FOR:
 - A. 600V MAX VOLTAGE RATING
 - B. 221°F (105°C) MAX TEMP RATING
 - C. STRANDED COPPER WIRE ONLY
 - D. 6-12 LBS INSERTION/WITHDRAWAL FORCE
- MATERIAL:
 - A. STAMPING-CDA 260 BRASS, TIN PLATED
 - B. HOUSING-TYPE 66 NYLON
- DIMENSIONS IN BRACKETS ARE IN mm OR mm²
- COLORS ARE TRANSLUCENT
- INSTALLATION TOOLS: CT-300-1
- PACKAGE QTY:
 - A. STD: C=100
 - B. BULK: M=1000
- WIRE STRIP LENGTH 11/32 ^{+1/32} (8.7 ^{+0.8}) ₋₀ ₋₀

PART NUMBER	TAB SIZE	WIRE RANGE AWG	COLOR	MAX. INSUL.	DIMENSIONS in.		
					A ±.02	B ±.01	C ±.02
DNFR18-250F1B-	.250 X .032	22-18 (0.5-1.0)	RED	.178 (4.52)	.60 (15.24)	.37 (9.40)	.58 (14.73)
DNFR18-205F1B-	.205/.187 X .032	22-18 (0.5-1.0)	RED	.178 (4.52)	.60 (15.24)	.37 (9.40)	.58 (14.73)
DNFR18-206F1B-	.205/.187 X .020	22-18 (0.5-1.0)	RED	.178 (4.52)	.60 (15.24)	.37 (9.40)	.58 (14.73)
DNFR14-250F1B-	.250 X .032	16-14 (1.5-2.5)	BLUE	.178 (4.52)	.60 (15.24)	.37 (9.40)	.58 (14.73)
DNFR14-205F1B-	.205/.187 X .032	16-14 (1.5-2.5)	BLUE	.178 (4.52)	.60 (15.24)	.37 (9.40)	.58 (14.73)
DNFR14-206F1B-	.205/.187 X .020	16-14 (1.5-2.5)	BLUE	.178 (4.52)	.60 (15.24)	.37 (9.40)	.58 (14.73)



LISTED
20H3
E78522



CERTIFIED
LR31212

REV	DATE	BY	CHK	APR	DESCRIPTION	ECN
05	2/21/18	BWG	SKB	JADE	ADDED DASH TO END OF PART NUMBERS. ADDED "LOOSE PIECE" TO TITLE. REVISED DIMENSION LOCATION OF HOUSING WIDTH AND UPDATED TITLE BORDER AND LOGOS.	019464/00

TITLE		RIGHT ANGLE FULLY INSULATED FEMALE DISCONNECTS .250 X .032, .205/.187 X .032/.020 - LOOSE PIECE	
ITEM REVISION NAME		CUSTOMER DRAWING	
DATASET FILE NAME		N41197BA/08	
UNLESS OTHERWISE SPECIFIED, DIMENSIONAL TOLERANCES ARE: IN [mm]		MATERIAL: SEE DRAWING	
DRAWING NUMBER:		A41197	
DRAWN BY	DATE	CHK	SCALE
DSM		RLS	NONE
SHT 1 OF 1		A	

D10100DA/20