

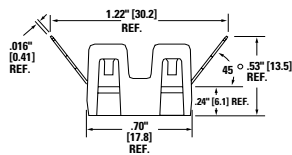
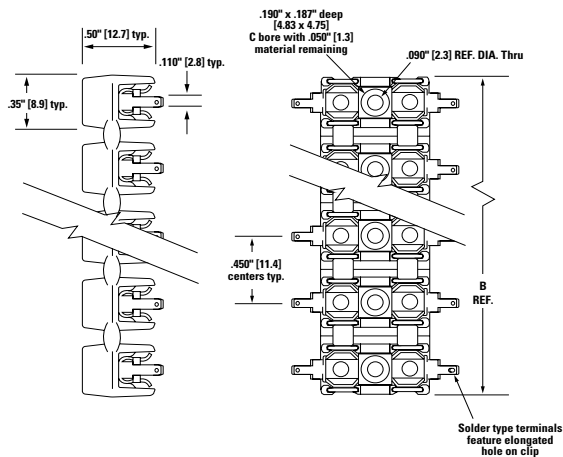
254 Series

OMNI-BLOK® Molded Base Fuse Block for 2AG Fuses

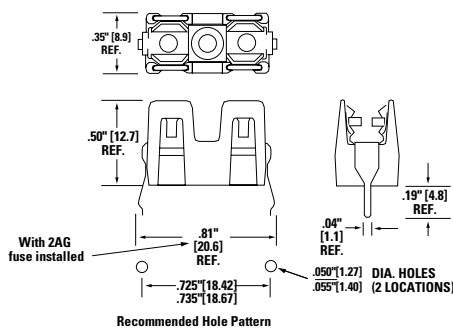


Dimensions [mm]

Solder & Q.C. Types:



P.C. Board Mount Type



Product Characteristics

| | |
|------------------------------|---|
| Compatible Fuses Size | 2AG |
| Description | This low profile Omni-Blok® Fuse Block design is available with a choice of solder type terminals, Q.C. terminals or P.C. board mountable terminals. The PCB design is offered with either tin-plated brass terminals for normal applications or tin-plated beryllium copper terminals for use in caustic environments. These fuse blocks feature individual barriers which reinforce the fuse clips while providing greater protection against clip damage and electrical shock. The unique design permits self-alignment of clips to fuse cap. This, plus a one-piece clip/terminal assures low contact resistance. Multiple units may be broken apart to obtain desired number of units. |
| Rating | 400 VAC/DC, 10A |
| Dielectric Strength | 1500V Minimum |
| Clip/Terminals | Tin-Plated Spring Brass, except pn 254121 is Tin-Plated Beryllium Copper |
| Base | Black Thermoplastic, glass reinforced with UL V0 flammability rating |
| Ambient Temperature | -40°C to +85°C |

Agency Approval

| Agency | Agency File Number |
|--------|--------------------|
| UL US | E14721 |
| SP | 7316 |

Options:

1. Other colors available on special order. Contact factory.
2. Two different style clips can be supplied for circuit identity or polarization. Contact factory.

Additional Information



Resources



Accessories



Samples

254 Series

OMNI-BLOK® Molded Base Fuse Block for 2AG Fuses

Ordering Information

| Ordering NO.* | Catalog NO. | No. of Poles | Width (B) | Width [mm] | Clip/Terminal Material | Packaging Available |
|--|-------------|--------------|-----------|------------|------------------------|---------------------|
| Solder Type Terminals | | | | | | |
| 02540001Z | 254 001 | 1 | 0.35" | [8.6] | Brass | Z |
| 02540002Z | 254 002 | 2 | 0.875" | [22.2] | Brass | Z |
| 02540003Z | 254 003 | 3 | 1.31" | [33.3] | Brass | Z |
| 02540004Z | 254 004 | 4 | 1.75" | [44.5] | Brass | Z |
| 02540005Z | 254 005 | 5 | 2.18" | [55.4] | Brass | Z |
| 02540006Z | 254 006 | 6 | 2.62" | [66.5] | Brass | Z |
| 02540007Z | 254 007 | 7 | 3.06" | [77.7] | Brass | Z |
| 02540008Z | 254 008 | 8 | 3.50" | [88.9] | Brass | Z |
| NEMA Style .110" Q.C. Terminals | | | | | | |
| 02540201Z | 254 201 | 1 | 0.35" | [8.6] | Brass | Z |
| 02540202Z | 254 202 | 2 | 0.875" | [22.2] | Brass | Z |
| 02540203Z | 254 203 | 3 | 1.31" | [33.3] | Brass | Z |
| 02540204Z | 254 204 | 4 | 1.75" | [44.5] | Brass | Z |
| 02540205Z | 254 205 | 5 | 2.18" | [55.4] | Brass | Z |
| 02540206Z | 254 206 | 6 | 2.62" | [66.5] | Brass | Z |
| 02540207Z | 254 207 | 7 | 3.06" | [77.7] | Brass | Z |
| 02540208Z | 254 208 | 8 | 3.50" | [88.9] | Brass | Z |
| PC. Board Mount | | | | | | |
| 02540101Z | 254 101 | 1 | 0.35" | [8.6] | Brass | Z |
| 02540121Z | 254 121 | 1 | 0.35" | [8.6] | Beryllium Copper | Z |

Add Suffix:

Z = for bulk package

Disclaimer Notice - Information furnished is believed to be accurate and reliable. However, users should independently evaluate the suitability of and test each product selected for their own applications. Littelfuse products are not designed for, and may not be used in, all applications. Read complete Disclaimer Notice at: www.littelfuse.com/disclaimer-electronics.