



- Industrial Operating Temp: -40°C to +85°C
- Storage Temp: -40°C to +85°C



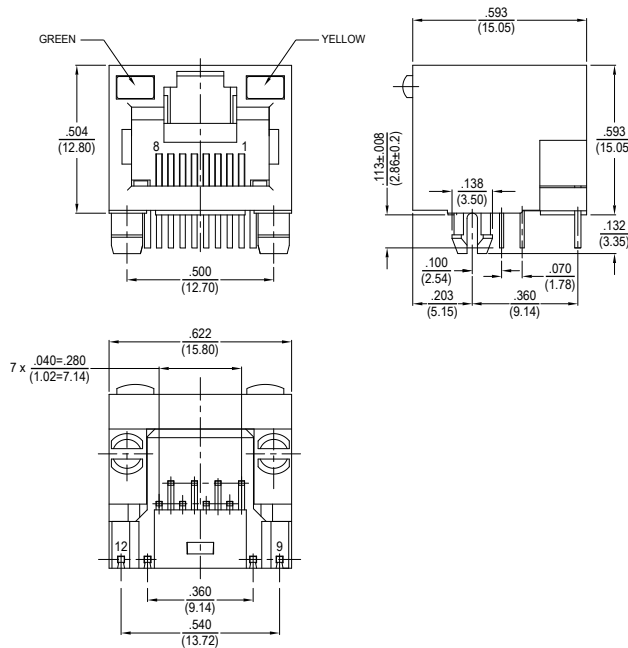
Electrical Specifications @ 25°C

Voltage Rating (VAC)	Current Rating (Amp)	Contact Resistance (mΩ)	Insulation Resistance @ 500VDC (MΩ)	Dielectric Strength 50/60Hz / 0.5mA / 60 Sec
125	1.5 Max	20 Max	1000 Min	1000VAC or 1500VDC

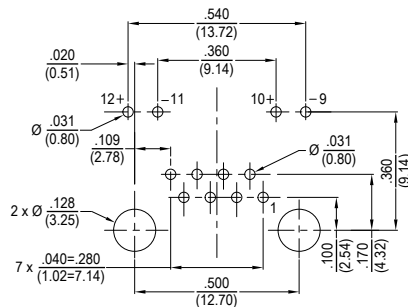
All specifications subject to change without notice.

MECHANICAL

Dimensions: $\frac{\text{inch}}{\text{mm}}$

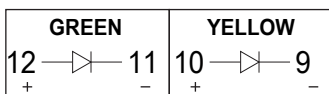


PCB LAYOUT



PCB Thickness 0.63" (1.60mm)
Tolerance ±.002 (0.05mm)

LEDs



NOTES

Connector Materials:
Housing & Insert: PBT Black
Contact Material: Phosphor Bronze T=.35mm
Contact Plating: Gold plating 3μ" at Contact Area, Matte Tin at Tail 100μ" Min, Nickel 30μ" Min Over All.