

S CN BN - J 1 1 50 - SO RPM

SUNTSU

CONNECTOR

BNC

Connector Type
Jack

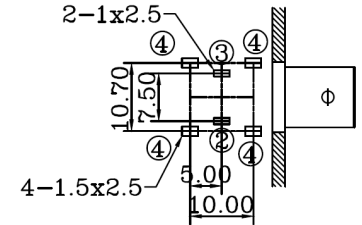
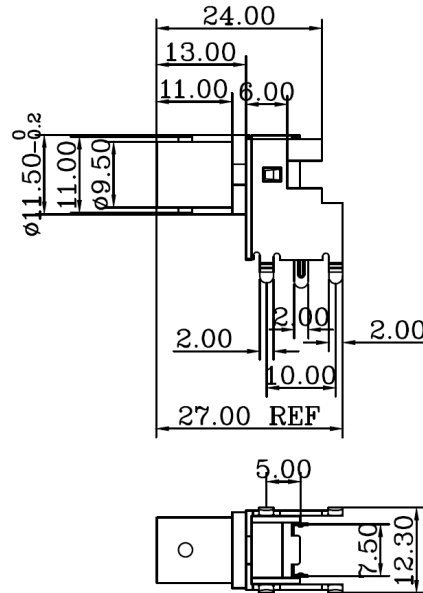
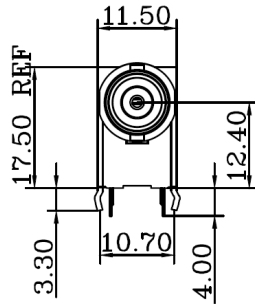
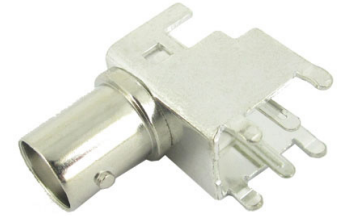
Rows

Connectors
per Row

Impedance
50

Contact Termination
Solder

Mounting Style
Right Angle PCB
Mount



Recommended
Mounting
Layout

- Materials:
 - Body: Zinc Nickel Plated
 - Contact: Brass Tin Plated
 - Insulator: PBT Natural
- Normal Impedance: 50Ω
- Frequency Range: 0-2 GHz
- Max Peak Voltage: 500V
- Dielectric Strength: 1500V RMS
- Insulation Resistance: 5000MΩ/Min



R/A BNC JACK SWITCH
FOR PCB

Document History				Part No.	REV.	Drawn	Page
Edits Made	Date	Edited By	Approved By	SCNBN-J1150-SORPM	A	B. Gibbons	06/28/2021
Initial Release	06/28/2021	B. Gibbons	KH Mun				
				Drawing No.	SCALE	Checked	1 / 1
					None	KH Mun	
				Tolerance	UNIT	Approved	
					mm	KH Mun	06/28/2021