

3.50 mm TO 34 GHz

3.50 mm Cable Assemblies RF235



VSWR

RF235: 1.30 max

SERIES

RF235
= MWC-2350-01 microwave cable with 23 AWG solid FEP Dielectric

END 1 CONNECTOR

-35SJP
= 3.50 mm Straight Jack

-35SPP
= 3.50 mm Straight Plug

END 2 CONNECTOR

OVERALL LENGTH

-"XXXX"
= Overall Length in millimeters
-0100 (100 mm) 3.94" min.

3.50 mm Cable Connectors PRF35



CONNECTORS FOR INDUSTRY STANDARD CABLES

PRF35-P-C-EP-405-SS	RG 405, Semi-Rigid
PRF35-J-C-EP-402-SS	RG 402, .141, Semi-Rigid
PRF35-J-C-EP-402-BS	RG 402, .141, Semi-Rigid
PRF35-P-C-EP-402-SS	RG 402, .141, Semi-Rigid
PRF35-P-C-EP-120A-SS	Semflex HP120
PRF35-J-C-EP-160-SS	Semflex HP160
PRF35-P-C-EP-160-SS	Semflex HP160
PRF35-P-C-EP-210A-SS	Micro-Coax UFA210A

For a complete list of 3.50 mm cable connectors, visit www.samtec.com?PRF35

P-C = Cable Plug

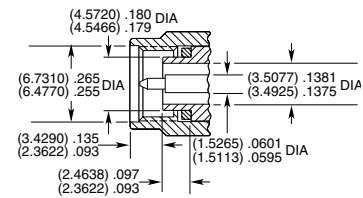
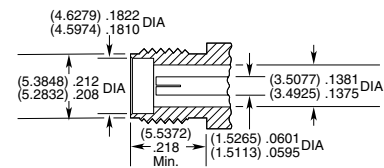
J-C = Cable Jack

EP = Plating (50 μ" Gold center contact, passivated outer contact)

SS = Straight, Solder Clamp

BS = Bulkhead, Solder Clamp

INTERFACE STANDARD



SSMA TO 34 GHz

SSMA Cable Connectors PRFS1



CONNECTORS FOR INDUSTRY STANDARD CABLES

PRFS1-J-C-EE-405-BD	RG 405, Semi-Rigid
PRFS1-P-C-EE-405-SD	RG 405, Semi-Rigid
PRFS1-P-C-EP-141A-SS	Harbour SS402

For a complete list of SSMA cable connectors, visit www.samtec.com?PRFS1

INTERFACE STANDARD

