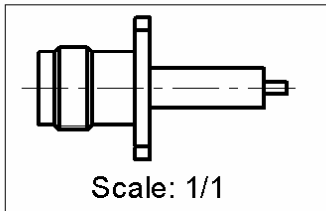
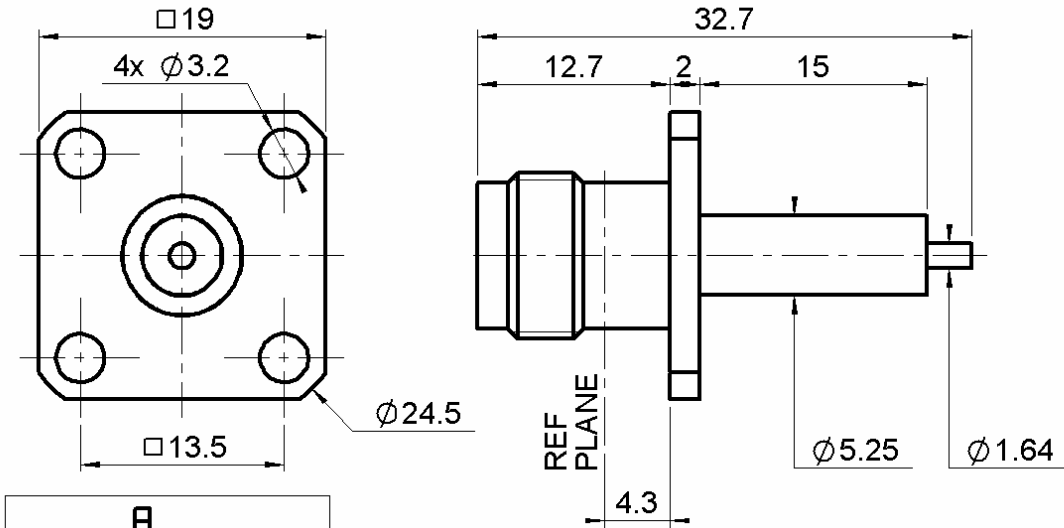


**SQUARE FLANGE JACK RECEPTACLE
WITH CYLINDRICAL CONTACT**

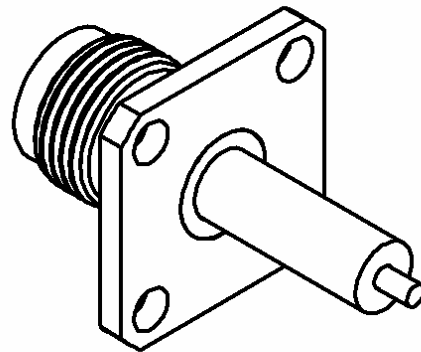
R143.412.700

Series : TNC-18

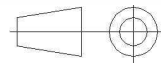


PANEL CUT OUT

| | mm | |
|--------------|-------|-------|
| | Maxi | mini |
| A (F. Mount) | 5.5 | 5.4 |
| A (R. Mount) | 11.3 | 11.2 |
| B | 3.3 | 3.2 |
| C | 13.55 | 13.45 |



All dimensions are in mm.



| COMPONENTS | MATERIALS | PLATINGS (µm) |
|----------------|------------------|------------------------|
| BODY | STAINLESS STEEL | PASSIVATED |
| CENTER CONTACT | BERYLLIUM COPPER | GOLD 2.5 OVER NICKEL 2 |
| OUTER CONTACT | - | - |
| INSULATOR | PTFE | - |
| GASKET | - | - |
| OTHERS PARTS | STAINLESS STEEL | PASSIVATED |
| - | - | - |
| - | - | - |

Issue : 1045 B

In the effort to improve our products, we reserve the right to make changes judged to be necessary.



**SQUARE FLANGE JACK RECEPTACLE
WITH CYLINDRICAL CONTACT**

R143.412.700

Series : TNC-18

PACKAGING

| Standard | Unit | Other |
|----------|------|-------------------|
| 1 | - | Contact us |

SPECIFICATION

ELECTRICAL CHARACTERISTICS

| | | |
|---------------------------------|---------------------|--------------------------------|
| Impedance | 50 | Ω |
| Frequency | 0-18 | GHz |
| VSWR | 1.1 + 0,0100 | x F(GHz) Maxi |
| Insertion loss | 0.06 | $\sqrt{F}(\text{GHz})$ dB Maxi |
| RF leakage | - (80+20) | - F(GHz)) dB Maxi |
| Voltage rating | 500 | Veff Maxi |
| Dielectric withstanding voltage | 1500 | Veff mini |
| Insulation resistance | 5000 | M Ω mini |

ENVIRONMENTAL

| | | |
|-----------------------|-----------------|--------------------|
| Operating temperature | -65/+105 | $^{\circ}\text{C}$ |
| Hermetic seal | NA | Atm.cm3/s |
| Panel leakage | NA | |

OTHERS CHARACTERISTICS

Assembly instruction

Others :
Interface only

MECHANICAL CHARACTERISTICS

| | | |
|----------------------------|---------------|-------------|
| Center contact retention | | |
| Axial force – Mating end | 27.2 | N mini |
| Axial force – Opposite end | 27.2 | N mini |
| Torque | 2.8 | N.cm mini |
| Recommended torque | | |
| Mating | NA | N.cm |
| Panel nut | NA | N.cm |
| Mating life | 500 | Cycles mini |
| Weight | 9,8870 | g |

Issue : 1045 B

In the effort to improve our products, we reserve the right to make changes judged to be necessary.

