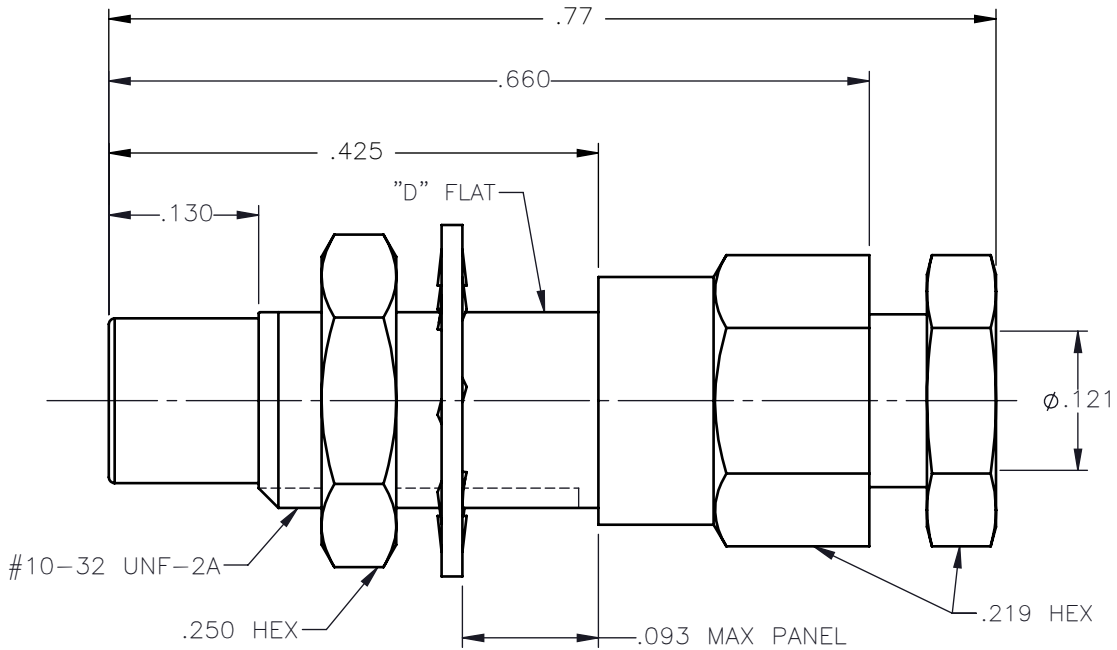


REVISIONS			
REV.	DESCRIPTION	DATE	APPROVED
A	INITIAL RELEASE	10/07/16	N.D.



NOTES:

MATERIALS:

1. INSULATORS = VIRGIN WHITE TEFLON PER ASTM D1710, GRADE 1, TYPE I, CLASS "B".
2. LOCKWASHER = PHOSPHOR BRONZE PER ASTM B139, COPPER ALLOY C53400, TEMPER H04.
3. ALL OTHER METAL PARTS = BRASS PER ASTM B16, ALLOY C36000, TEMPER H02.

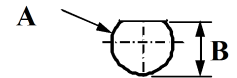
FINISHES:

1. CONTACT = GOLD PLATE PER ASTM B488-11, TYPE II, 50 μ in MIN, GRADE C, OVER 100 TO 200 μ in STRESS FREE SULFAMATE NICKEL PER AMS-QQ-N-290.
2. ALL OTHER METAL PARTS = GOLD PLATE PER ASTM B488-11, TYPE II, 30 μ in MIN, GRADE C OVER 100 TO 200 μ in COPPER STRIKE PER AMS 2418.



TEMPERATURE RATING: -65° C TO +165° C

VOLTAGE RATING: 250 VRMS @ SEA LEVEL

PANEL CUT OUT



inches		
	Maxi	mini
A	.198	.192
B	.183	.177

UNLESS OTHERWISE SPECIFIED DIMENSIONS ARE IN INCHES TOLERANCES ON	DWN:	DATE	 Property of Radiall This document cannot be reproduced or communicated to a third party without prior written permission of RADIALL.				
	N.D.	10/07/16					
DECIMAL	ANGLE	CHKD:	DATE	SMC STRAIGHT MALE BULKHEAD JACK SOLDER/CLAMP TYPE FOR .086 S/R & SIMILAR CABLES			
		D.N.	10/07/16				
REFERENCE:		APVD:	DATE	SIZE	FSCM NO.	DWG NO.	REV
ORIGINATED: N.D. DATE: 10/07/16		MATERIALS & FINISHES: SEE NOTES		A	19505	1003-1541-010	A
				SCALE	6:1	THIRD ANGLE PROJECTION	SHEET 1 OF 1

1003-1541-010