

SIGN	DATE	DESCRIPTION	APPROVER
------	------	-------------	----------

THIS IS CAD DRAWING, DO NOT REVISE MANUALLY!!!

Technical Data

Material:

Pin (outer sleeve) : Brass,machined, CuZn38Pb2
 Clip(contact 4 finger) : Beryllium copper ,heat treated or PHBZ
 Plating(outer sleeve) : Tin plated : 2um/80u"nickel,5um/200u"Tin
 Gold plated: 2um/80u"nickel,2um/80u"Gold
 Plating clip(contact): 2um/80 u"nickel,gold Flash
 Insulator body(black) : Glass filled thermoplastic polyester UL94V-0

Electrical

Current rating : 3 Amps/contact max.
 Contact resistance : 4mΩ/contact
 Insulation resistance : 10000MΩat 500VAC
 Rated voltage : 100 VRMS /150VDC

Mechanical

Operating temperature : -40° C to +105° C
 (Continuous) -67° F to +105° F

Average insertion force with steel pin of: £X0.43mm/0.017" < 250g
 Average withdrawal force with steel pin of £X 0.43mm/0.017" >50g
 Mechanical life : min. 200 Cycles

Environmental data

Solderability (IEC 60068-2-20. Ta) :235° C, 2s
 Resistance to soldering heat (IEC 60068-2-20. Tb) :
 -Through hole mount components :260° C, 10s

PART NUMBER:

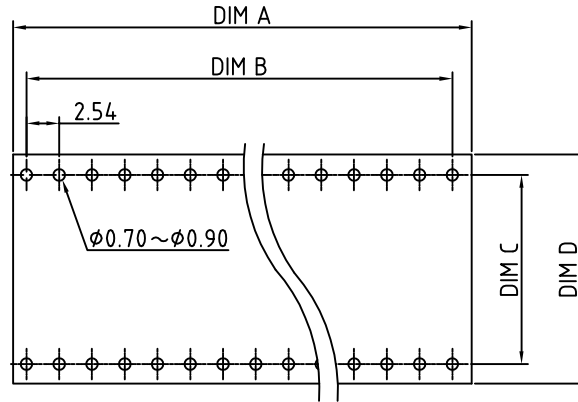
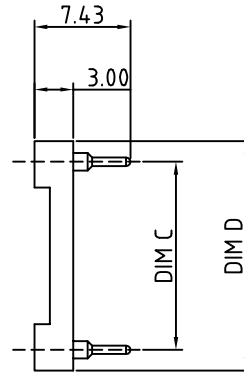
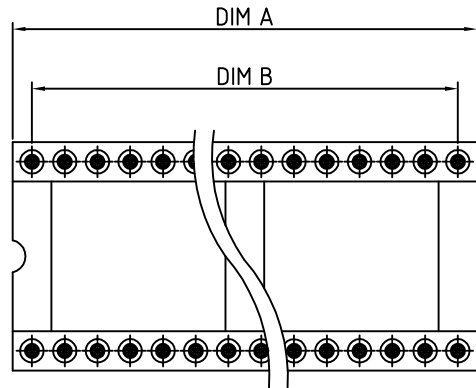
RoHS Compliant

SAXXX0X0

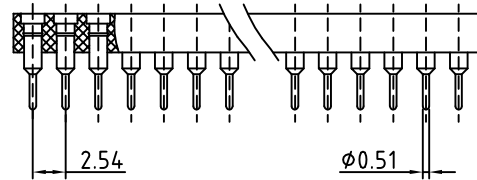
No. of Contacts
 (See chart)

Plating
 0: Tin
 4: Gold

THESE DRAWINGS AND SPECIFICATIONS ARE THE PROPERTY OF ON-SHORE TECHNOLOGY, INC. AND SHALL NOT BE REPRODUCED, COPIED OR USED IN ANY MANNER WITHOUT THE PRIOR WRITTEN CONSENT OF ON-SHORE TECHNOLOGY, INC.



P.C.B. LAYOUT



P/N	Contact	Dim A	Dim B	Dim C	Dim D	P/N	Contact	Dim A	Dim B	Dim C	Dim D
SA0630X0	6	7.62	5.08	7.62	10.16	SA2460X0	24	30.48	27.94	15.24	17.78
SA0830X0	8	10.16	7.62	7.62	10.16	SA2860X0	28	35.56	33.02	15.24	17.78
SA1030X0	10	12.70	10.16	7.62	10.16	SA3260X0	32	40.64	38.10	15.24	17.78
SA1430X0	14	17.78	15.24	7.62	10.16	SA3660X0	36	45.72	43.18	15.24	17.78
SA1630X0	16	20.32	17.78	7.62	10.16	SA4060X0	40	50.80	48.26	15.24	17.78
SA1830X0	18	22.86	20.32	7.62	10.16	SA4260X0	42	53.34	50.80	15.24	17.78
SA2030X0	20	25.40	22.86	7.62	10.16	SA4860X0	48	60.96	58.42	15.24	17.78
SA2430X0	24	30.48	27.94	7.62	10.16	SA5260X0	52	66.04	63.50	15.24	17.78
SA2830X0	28	35.56	33.02	7.62	10.16	SA6490X0	64	81.28	78.74	22.86	25.40
SA2240X0	22	27.94	25.40	10.16	12.70						



TITLE IC/SKT SA 7.43 mmL finished products series (Open frame)					
PART NO.	SAXXX0X0		DWG NO.	SAXXX0X0.dwg	
APPROVED	CHECKED	DESIGNED	DRAWN	CUST NO.	Tolerance
		Aaron 2006.01.12	Aaron 2006.01.12		X. ±0.50 X.X ±0.30 X.XX ±0.10 X* ±1*
				SHEET: 01/01	REV.: C