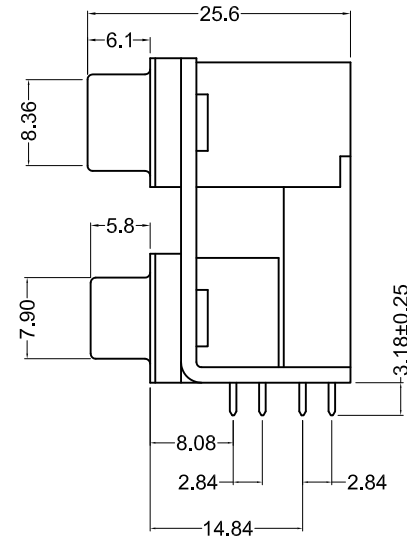
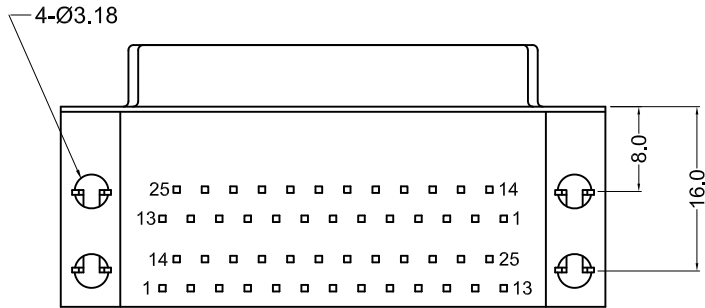
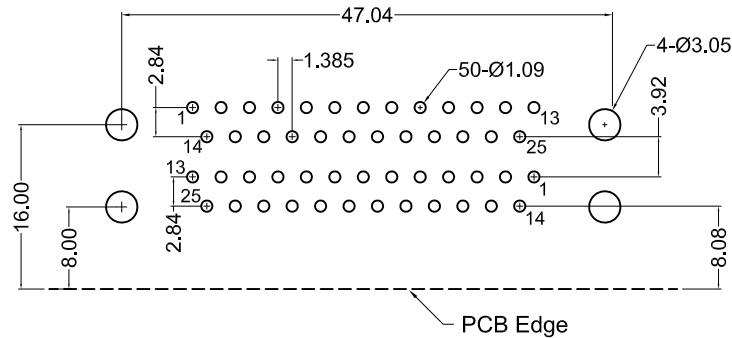


Grounding Brackets not shown in side views



Recommended PCB Layout (Top View)



Ordering Information

Part Number	Contact Area Plating Finish
K42X-B25P/S-A4N	Gold Flash (standard)
K42X-B25P/S-A4N15	15u" Gold (15 option)
K42X-B25P/S-A4N30	30u" Gold (30 option)

Material and Finish

- Shell: Steel, nickel plated
- Insulator: PBT thermoplastic with glass-fiber reinforcement, UL94V-0 rated, Color: Black
- Contact Material:
 - Socket - Phosphor Bronze
 - Plug - Brass
- Contact Plating Options:
 - Standard: gold flash on mating end, tin on termination end, nickel underplate on entire contact
 - 15 Option: 15u" gold on mating end, tin on termination end, nickel underplate on entire contact
 - 30 Option: 30u" gold on mating end, tin on termination end, nickel underplate on entire contact

Electrical Specifications

- Rated Current: 1.2A
- Rated Voltage: 30V RMS
- Insulation Resistance: more than 1000 megohms at 500V DC
- Contact Resistance: 13 milliohms max.
- Dielectric Withstanding Voltage: 1000V for 1 minute
- Operating Temperature: -55°C to +105°C



Tolerances
X.X ± 0.25
X.XX ± 0.15
Unless Stated Otherwise

REV.	DATE	DESCRIPTION	REV. BY	CHK. BY	DRAWN BY	DATE
A1	11/4/05	New Drawing	R. Aguirre	H. MA	R. Aguirre	11/3/05
A2	06/18/07	ECO #07-018	A. Frederick	H. MA		
A3	03/14/08	ECO # 07-049	S. Vien	H. Ma		
A4	12/31/17	ECO #17-037	G. Serrato	C. Furumasu		
A5	03/14/19	ECO #19-020	H. MA	D. Shehan		

K42X-B25P/S-A4N

Right Angle, PCB Mount, Dual Port, RoHS Compliant

Male/Female 0.750" Spacing

