

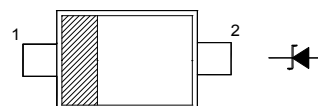
## SILICON PLANAR ZENER DIODES

### Features

- Standard Zener Breakdown Voltage Range  
9.1 V
- Steady State Power Rating of 200 mW

### PINNING

PIN	DESCRIPTION
1	Cathode
2	Anode



Top View  
Simplified outline SOD-523 and symbol

### Absolute Maximum Ratings ( $T_a = 25\text{ }^\circ\text{C}$ )

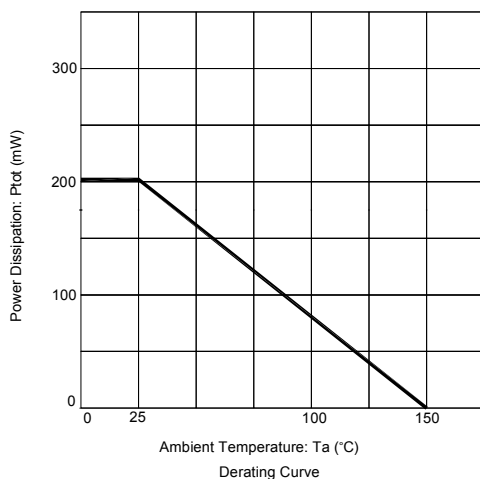
Parameter	Symbol	Value	Unit
Total Device Dissipation	$P_{tot}$	200	mW
Junction and Storage Temperature Range	$T_j, T_{stg}$	- 65 to + 150	$^\circ\text{C}$

### Characteristics at $T_a = 25\text{ }^\circ\text{C}$

Parameter	Symbol	Max.	Unit
Forward Voltage at $I_F = 10\text{ mA}$	$V_F$	0.9	V

Type	Marking Code	Zener Voltage <sup>1)</sup>				Zener Impedance			Leakage Current	
		$V_{ZT}$ (V)			at $I_{ZT}$	$Z_{ZT}$	$Z_{ZK}$	at $I_{ZK}$	$I_R$	at $V_R$
		Min.	Nom.	Max.	mA	$\Omega$	$\Omega$	mA	$\mu\text{A}$	V
MM5Z9V1	N8	8.5	9.1	9.6	5	15	160	1	0.5	6

<sup>1)</sup> Tested with pulses  $t_p = 20\text{ ms}$ .

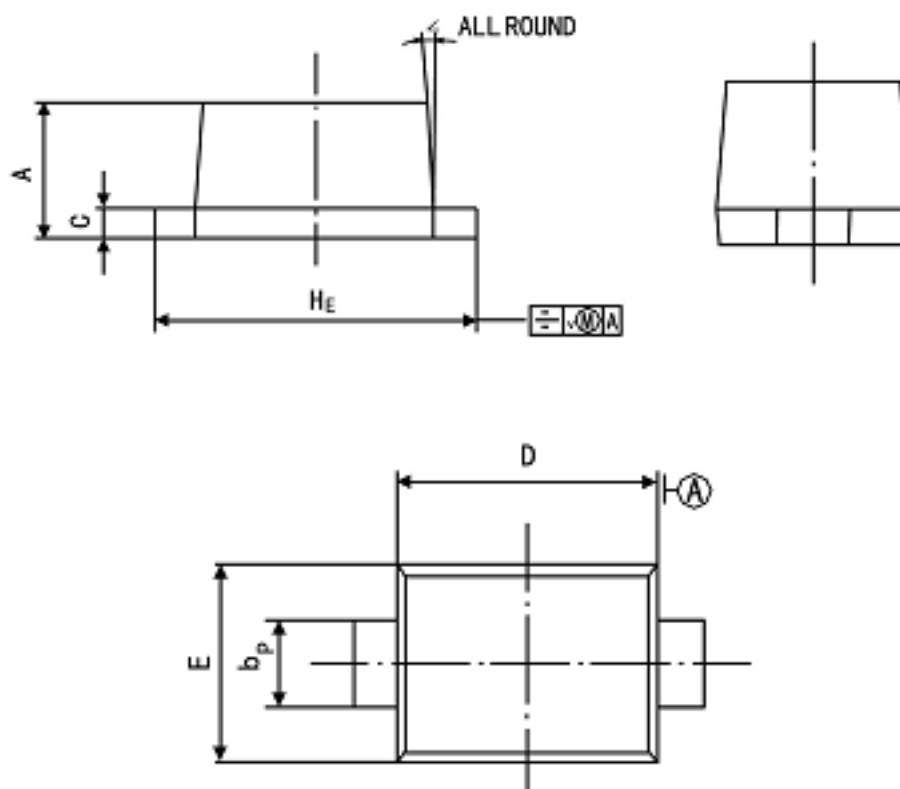




## PACKAGE OUTLINE

Plastic surface mounted package; 2 leads

SOD-523



Symbol	Dimension in Millimeters	
	Min	Max
A	0.60	0.70
bp	0.30	0.40
C	0.100	0.14
D	1.15	1.25
E	0.75	0.85
HE	1.50	1.70
V	—	0.10
∠	—	5°