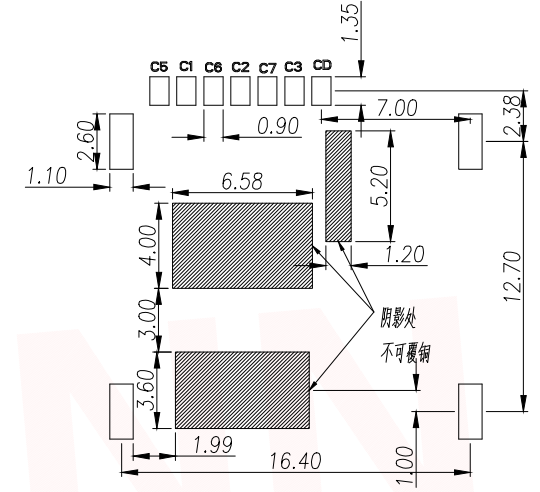
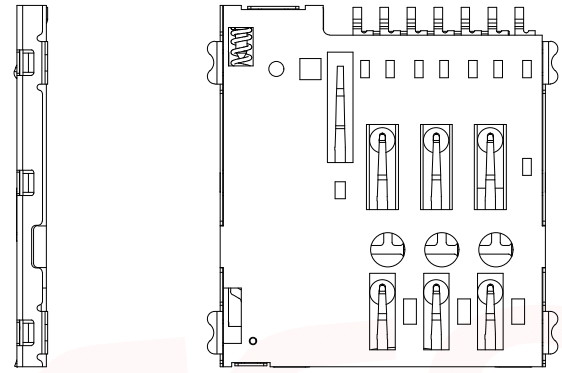
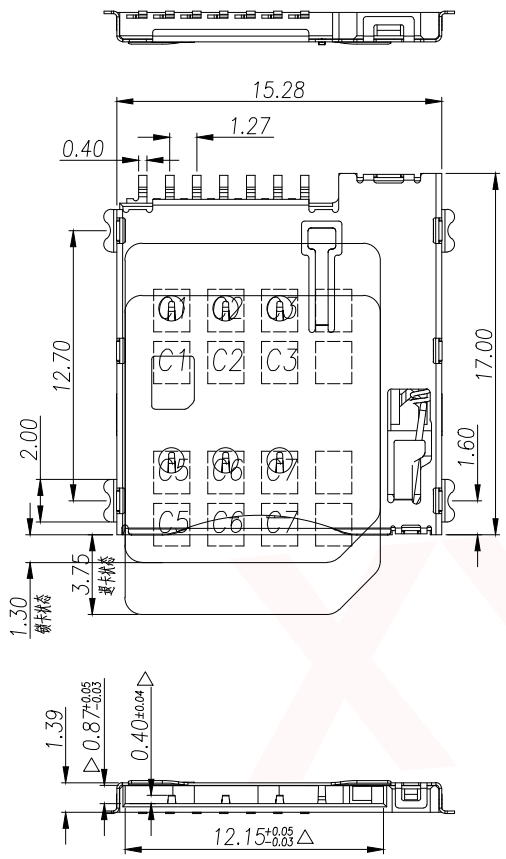
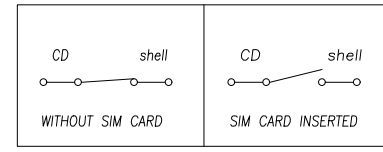


| | | | | |
|------|------|----------|------|------|
| REV. | Q'TY | ECN. NO. | APR. | DATE |
| | | | | |

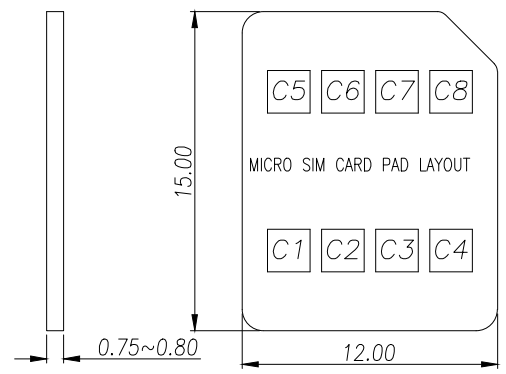


- MATERIAL:**
HOUSING:LCP S475 UL 94V-0
CONTACT:C5191
SHELL:SUS304-H
- FINISH:**
CONTACT:GOLD FLASH PLATED ON CONTACT AREA;
GOLD FLASH PLATED ON SOLDER TAILS,
- ELECTRICAL CHARACTERISTICS**
RATING CURRENT : 0.5A MAX.
CONTACT RESISTANCE :50 mΩ MAX
DIELECTRIC WITHSTANDING : 500V AC MIN.
INSULATION RESISTANCE: 1000 MΩ MIN.
- MECHANICAL CHARACTERISTICS**
MATING CYCLE :3000 CYCLES

RECOMMENDED PCB LAYOUT TOP VIEW (TOLERANCE:±0.05)
RECOMMENDED MATAL MASK T=0.12mm



| SIM pin Assignment | |
|--------------------|------|
| PIN# | Name |
| C1 | VCC |
| C2 | RST |
| C3 | CLK |
| C5 | GND |
| C6 | VPP |
| C7 | I/O |



| DIMENSION IN mm | | TOLERANCE UNLESS OTHERWISE SPECIFIED | | APR. Alex | | TITLE: 1.35H 6+1PIN PUSH PUSH MICRO SIM CARD CONNECTOR | |
|-----------------|----------|--------------------------------------|--|----------------------------|-----------|--------------------------------------------------------|--------|
| .X±0.35 | X.*± 5° | CHK. Jack | | DWG NO. SIM202G-ZYB7AH1.35 | | | |
| .XX±0.25 | .X°± 3° | DRA. Can | | PROJ. | | CUSTOMER DRAWING | |
| .XXX±0.15 | .XX°± 1° | | | SIZE A4 | SCALE 1:1 | SHEET 1/1 | REV. A |

厦门市辛译精密电子有限公司
Xiamen XinYi Xyecom Electronics Co.,Ltd