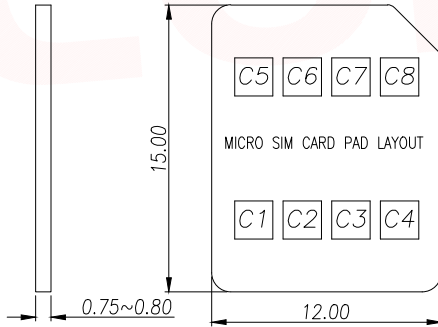
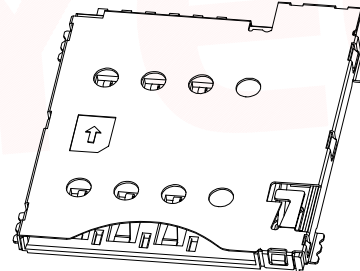
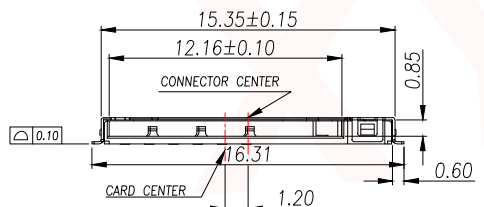
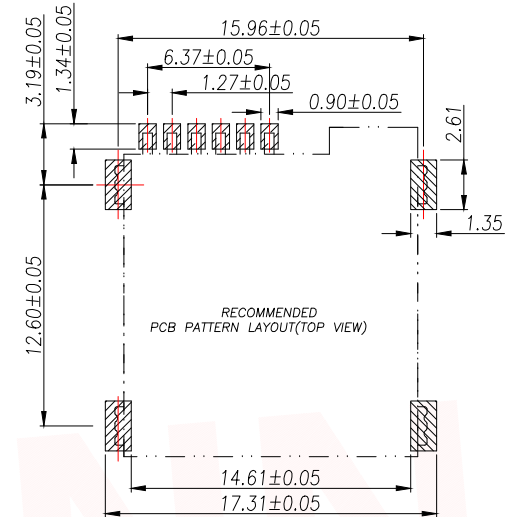
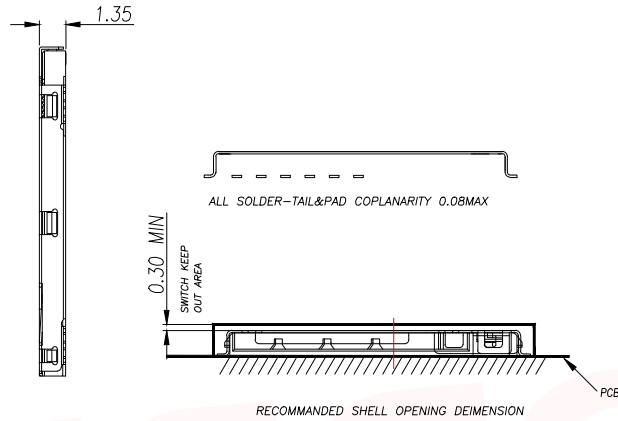
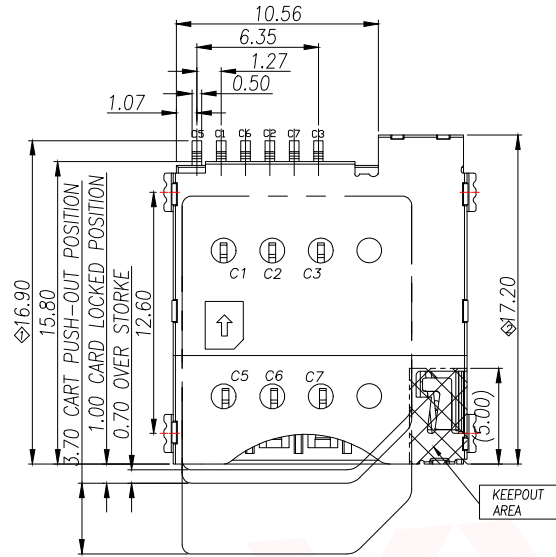
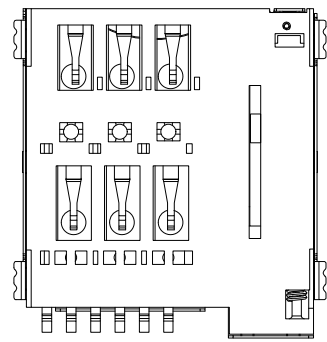


REV.	Q'TY	ECN. NO.	APR.	DATE



- NOTES:
- ELECTRICAL CHARACTERISTICS:
    - 1-1. CURRENT RATING: 0.5 Amp. MAX.
    - 1-2. VOLTAGE: 100V DC. MAX.
    - 1-3. LOW LEVEL CONTACT RESISTANCE: 100 mOhms MAX. INITIALLY.
    - 1-4. DIELECTRIC WITHSTANDING VOLTAGE: 500V AC MIN. FOR 1 MINUTE.
    - 1-5. INSULATION RESISTANCE: (INITIAL) 1000MOhms MIN.. (FINAL) 100MOhms MIN. BY APPLYING 500V DC ON MATED AND UNMATED CONNECTORS THROUGH MIL-STD-202, METHOD 302.
  - MECHANICAL CHARACTERISTICS:
    - 2-1. DURABILITY: 5000 CYCLES.
    - 2-2. OPERATING TEMP. RANGE: -25°C TO 85°C. [INCLUDING TERMINAL TEMP. RISE]
    - 2-3. STORAGE TEMP.: -40°C TO 85°C.
  - DIMENSIONS MARKED  $\nabla$  ARE MAJOR CHECKED DIMENSIONS.
  - HARMFUL MATERIAL CONTROL PLEASE FOLLOW DOC. NO. "EP112".
  - QUANTITY OF PRODUCTS: 1400PCS/REEL



SIM CARD	
Pin No.	NAME
C1	VCC
C2	RST
C3	CLK
C4	RESERVED
C5	GND
C6	VPP
C7	I/O
C8	RESERVED

DIMENSION IN mm		APR. Alex		TITLE: 1.35H 6PIN PUSH PUSH MICRO SIM CARD CONNECTOR	
TOLERANCE UNLESS OTHERWISE SPECIFIED					
.X±0.35	X.*± 5*	CHK. Jack	DRA. Can	DWG NO. SIM202-ZYB6AH1.35	
.XX±0.25	.X*± 3*			PROJECT:  CUSTOMER DRAWING	
.XXX±0.15	.XX*± 1*	SIZE A4		SCALE 1:1	SHEET 1/1
				REV. A	