

- Designed to meet IEEE 802.3u requirement, including 350uH OCL with 8mA bias.
- Comply with ROHS & Halogen Free requirements.
- Operating temperature range: 0 to +70 .
- Storage temperature range: -25 to +85 .



Electrical Specifications @ 25

Part Number	Insertion Loss (dB Max)	Return Loss (dB Min)				Cross talk (dB Min)		DCMR (dB Min)		
		0.3~100MHz	0.3-30MHz	40MHz	50MHz	60-80MHz	0.3-60MHz	60-100MHz	30MHz	60MHz
TS8121A HF	-1.15	-18	-15.5	-13	-12	-45	-35	-40	-35	-30
TS21C HF	-1.15	-18	-15.5	-13.6	-12	-45	-35	-40	-35	-30
TS8121CX HF	-1.15	-18	-15.5	-13.6	-12	-45	-35	-40	-35	-30
TS8121K HF	-1.15	-18	-15.5	-13.0	-12	-45	-35	-42	-35	-30
TS8121AX HF	-1.15	30MHz	60MHz		80MHz	-45	-35	-40	-35	-30
		-18	-14		-12					
TS8121V HF	-1.0	1-30MHz	40-50MHz	60-80MHz		0.3MHz-100MHz		0.3MHz-100MHz		
		-18	-15	-12		-38		-40		
TS8121EK HF	-1.0	-18	-15	-12		-45	-35	-30		
TS8121B HF	-1.15	-18	-15.5	-13.6	-12	-30		-40		

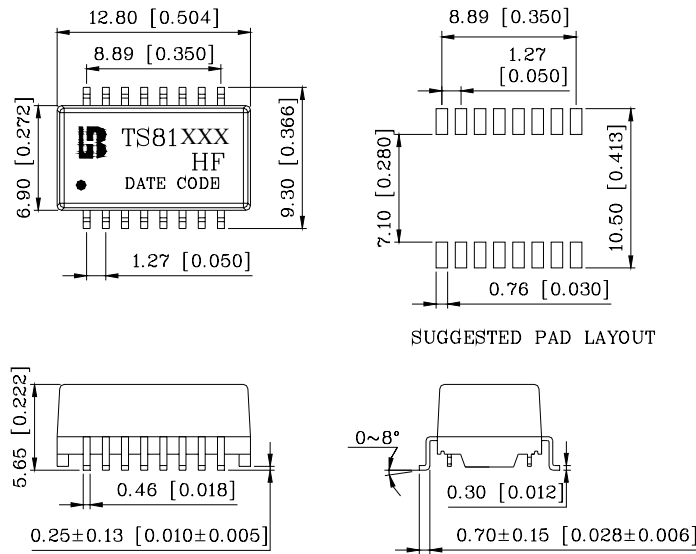
Continue

Part Number	Turns Ratio (±5%)		OCL (uH Min) @100KHz/0.1V with 8mA DC	HI-POT (Vrms)	PRI PINS
TS8121A HF	1CT:1CT	1CT:1CT	350	1500	(16-14)&(11-9)
TS21C HF	1CT:1CT	1CT:1CT	350	1500	(1-3)&(6-8)
TS8121CX HF	1CT:1CT	1CT:1CT	350	1500	(1-3)&(6-8)
TS8121K HF	1CT:1	1CT:1CT	350	1500	-
TS8121AX HF	1CT:1CT	1CT:1CT	350	1500	-
TS8121V HF	1CT: 1	1CT: 1CT	350	1500	-
TS8121EK HF	1CT: 1	1CT: 1CT	350	1500	-
TS8121B HF	1.25CT: 1CT	1CT:1CT	350	1500	-

For customized parts or more detailed information, please log on www.bothhand.com or write to sales@bothhand.com

Mechanicals

TS81XXX HF

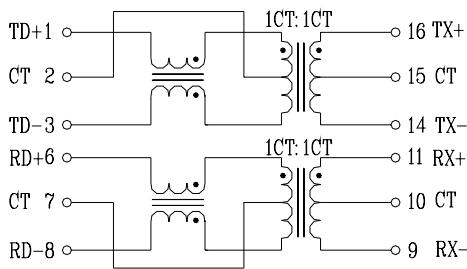


Units: mm[Inches] Tolerances: xx.x0±0.25[0.010]
0.xx±0.05[0.002]

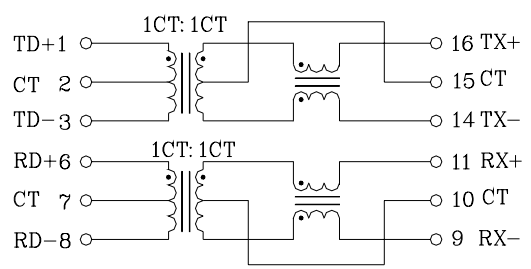
Specification	Packing Manner	Q'ty per Tube/Reel	Q'ty/ Inner box	Q'ty/ Carton
TS81XXX HF	REEL	600	1200	6000

Schematics

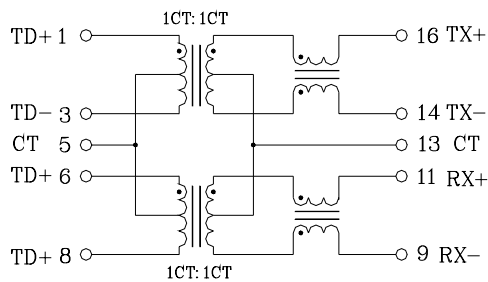
TS8121A HF



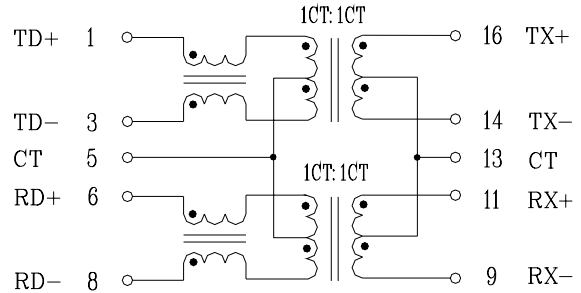
TS21C HF



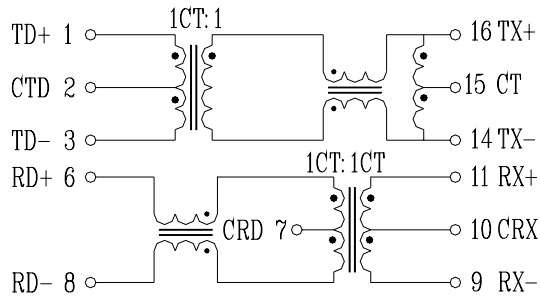
TS8121CX HF



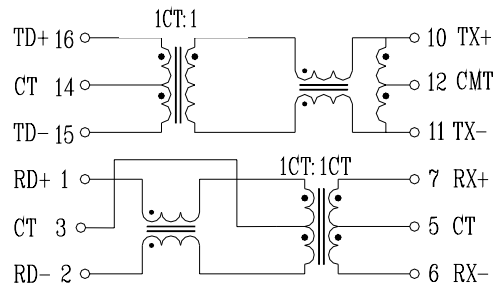
TS8121AX HF



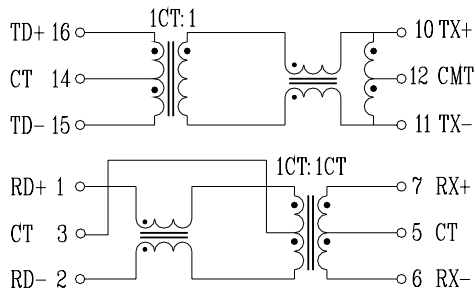
TS8121K HF



TS8121V HF



TS8121EK HF



TS8121B HF

