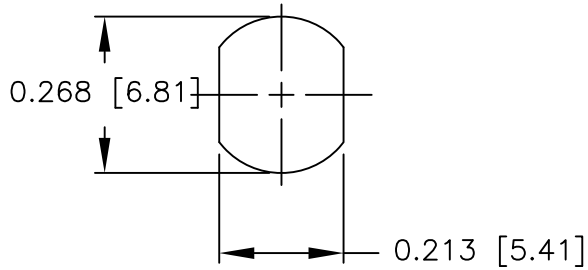


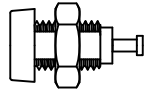
NOTES: UNLESS OTHERWISE SPECIFIED

- CONSTRUCTION:
HANDLE: NYLON. AVAILABLE IN TEN COLORS.
SOCKET: BRIGHT TIN PLATED BRASS.
- PERFORMANCE:
MAXIMUM CURRENT: 10 AMPS
MAXIMUM VOLTAGE: 5700 VRMS
MAXIMUM TEMPERATURE: 200°F (93°C)

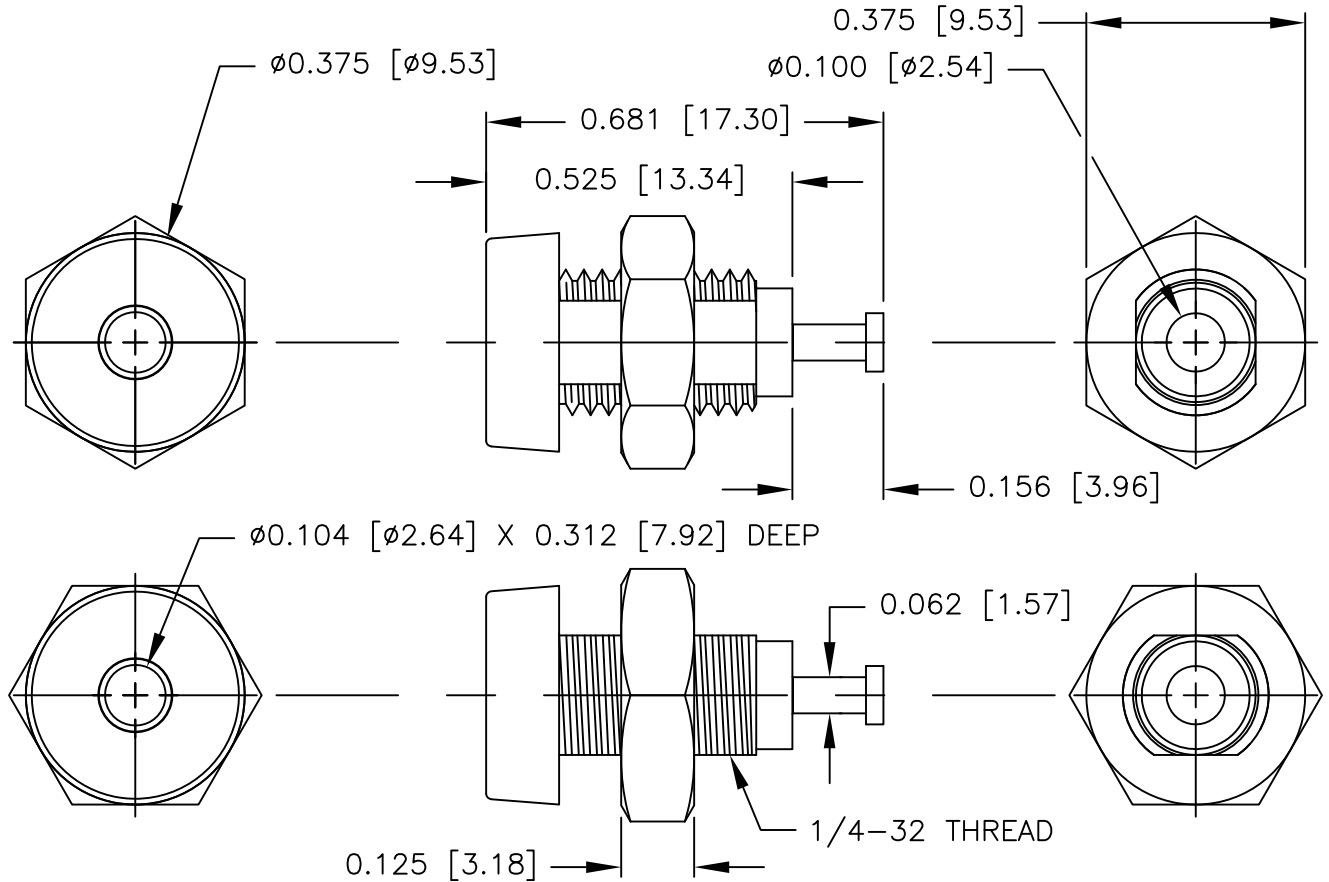
LTR	REVISIONS		DATE	APPROVED
	DESCRIPTION			



MOUNTING HOLE
MAX PANEL THICKNESS: 0.187 [4.75]



ACTUAL SIZE



UNLESS OTHERWISE SPECIFIED DIMENSIONS ARE IN INCHES TOLERANCES ARE: FRACTIONS DECIMALS ANGLES ± N/A .XX ± N/A ± N/A .XXX ± N/A		CONTRACT NO.	
		APPROVALS	DATE
MATERIAL SEE NOTE.		DRAWN	R.L. 11/16
		APPROVED BY	
FINISH SEE NOTE.			
NEXT ASSY	USED ON		
APPLICATION		DO NOT SCALE DRAWING	

E-Z-HOOK DIVISION OF TEKTEST INC. ARCADIA, CA 91006 U.S.A.			
DESCRIPTION MINIATURE BANANA JACK PANEL MOUNT			
SIZE	CODE IDENT NO.	DRAWING NO.	REV.
A	08505	9283	
SCALE		SHEET 1 OF 1	
3:1			

THE INFORMATION CONTAINED IN THIS DOCUMENT IS PROPRIETARY TO E-Z-HOOK. THE INFORMATION IS NOT TO BE REPRODUCED WITHOUT PRIOR WRITTEN PERMISSION OF E-Z-HOOK, DIV. OF TEKTEST INC. MAXIMUM TESTED RATINGS IN A HANDS-FREE CONTROLLED ENVIRONMENT. MAXIMUM RATINGS ARE NOT TO BE USED CONCURRENTLY.