

NOTES:

1. MATERIALS:

PHONO PLUG:

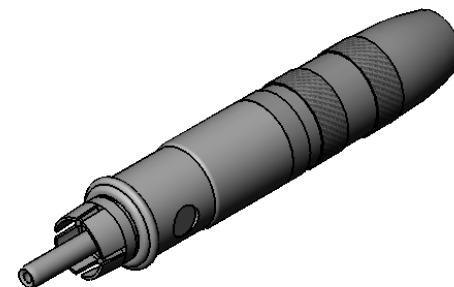
- PIN - COPPER ALLOY, NICKEL PLATED
- WASHER - PHENOLIC
- PLUG BODY - COPPER ALLOY, NICKEL PLATED
- ADAPTER SHELL - COPPER ALLOY



JACK:

- HOUSING - COPPER ALLOY, NICKEL PLATED
- SPRING - SPECIAL COPPER ALLOY
- INSULATING WASHER - PHENOLIC
- TERMINAL INSULATOR - THERMOPLASTIC
- GROUND CLIP - SPECIAL COPPER ALLOY
- WIRE - TINNED COPPER
- OVERMOLD - THERMOPLASTIC, GRAY

2. THIS PRODUCT IS RoHS COMPLIANT.



CUSTOMER DRAWING

					THIS DRAWING DESCRIBES A DESIGN CONSIDERED PROPRIETARY IN NATURE, DEVELOPED AND MANUFACTURED BY SWITCHCRAFT INC. AND IS RELEASED ON A CONFIDENTIAL BASIS FOR IDENTIFICATION PURPOSES ONLY.						
					SIZE	WIDTH	MULT	LBS/M	TEMPER		
					UNLESS OTHERWISE SPECIFIED			FINISH			
					1. ALL DIMENSIONS IN INCHES			MATERIAL			
					- TWO PLACE DECIMALS ±0.02			SPEC No.			
					- THREE PLACE DECIMALS ±0.005			SCALE			
					FIRST USED ON			2:1			
B	26801	7/12/11	PC	TJK	DATE DRAWN	BY	CHKD	APVD	Switchcraft®		
A	26212	1/22/07	RS	TJK	8/20/08	RS	RS	8/21/08			
REV	ECO NUMBER	DATE	BY	APVD	NAME ADAPTER, 1/4" 2 CONDUCTOR PHONE JACK TO PHONO PLUG, RoHS				PART No.	REV	
REVISIONS					DO NOT SCALE DRAWING					SHEET 1 OF 1	B
										336AX	

