



Electrical specifications

Center Frequency: 1485 MHz
Bandwidth: 100 MHz
VSWR: 1.5 : 1 min
Input / Output Impedance: 50 Ohms
Passband: 1435-1535 MHz
Passband Insertion Loss: 3.0 dB max
Passband Ripple: 1.0 dB max
Rejection: 35 dB min at 1385 MHz
Rejection 2: 35 dB min at 1585 MHz
Power Handling: 10 dBm

Mechanical

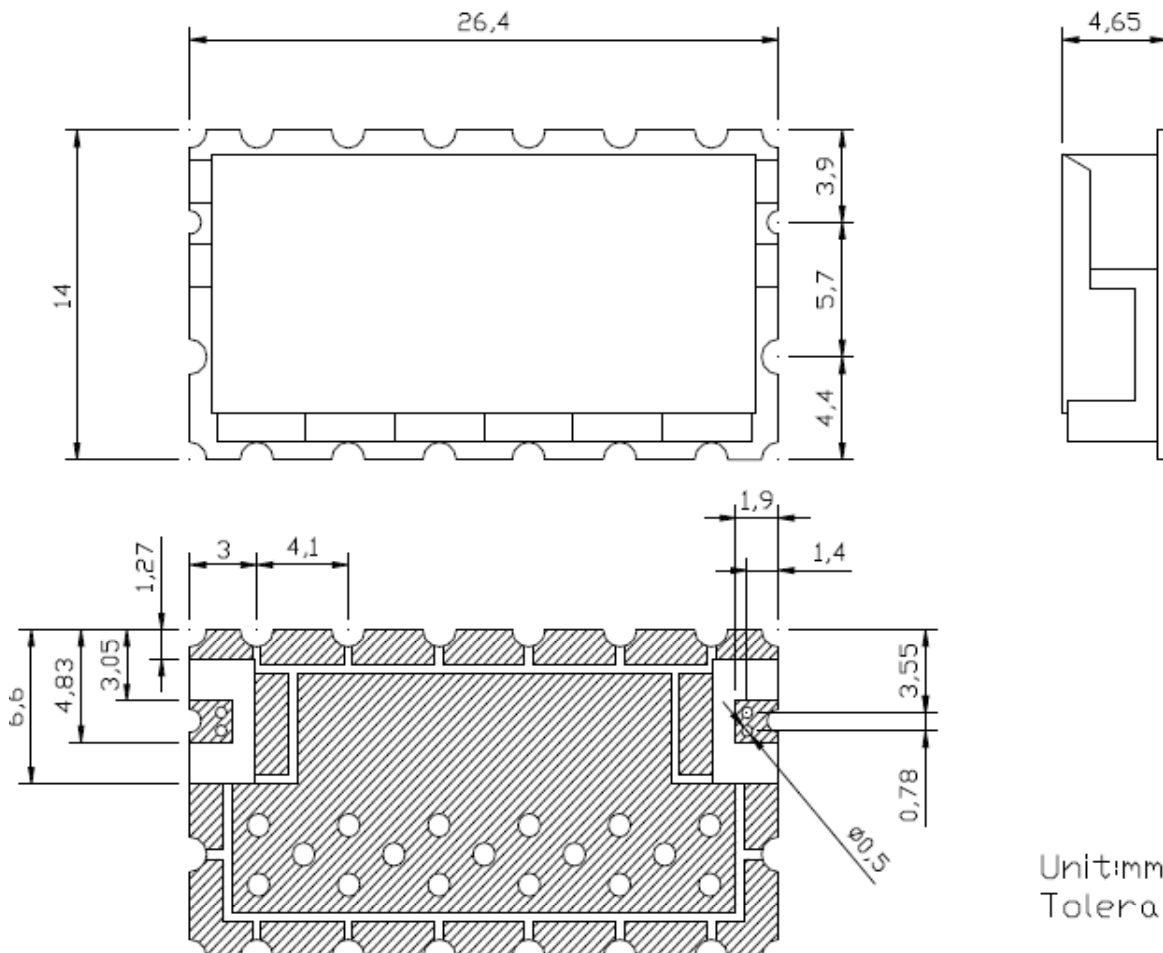
Mounting Method: SMT
Dimensions: 26.4 x 14 x 4.65 mm

Environmental

Operating Temperature: -20°C to 60°C
Storage Temperature: -50°C to +90°C

This product is RoHs compliant.

Outline Drawing:



Unit:mm
Tolerance:±0.3



ANATECH ELECTRONICS INC
RF & Microwave Filters & Products

1485 MHz Ceramic Bandpass Filter

Part Number: AM1485B1449



Response Plot:

