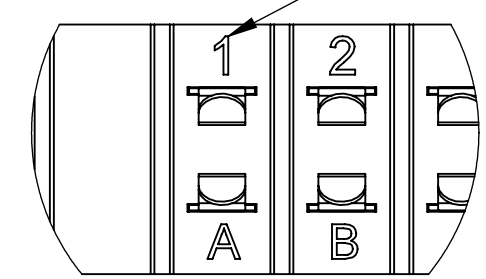
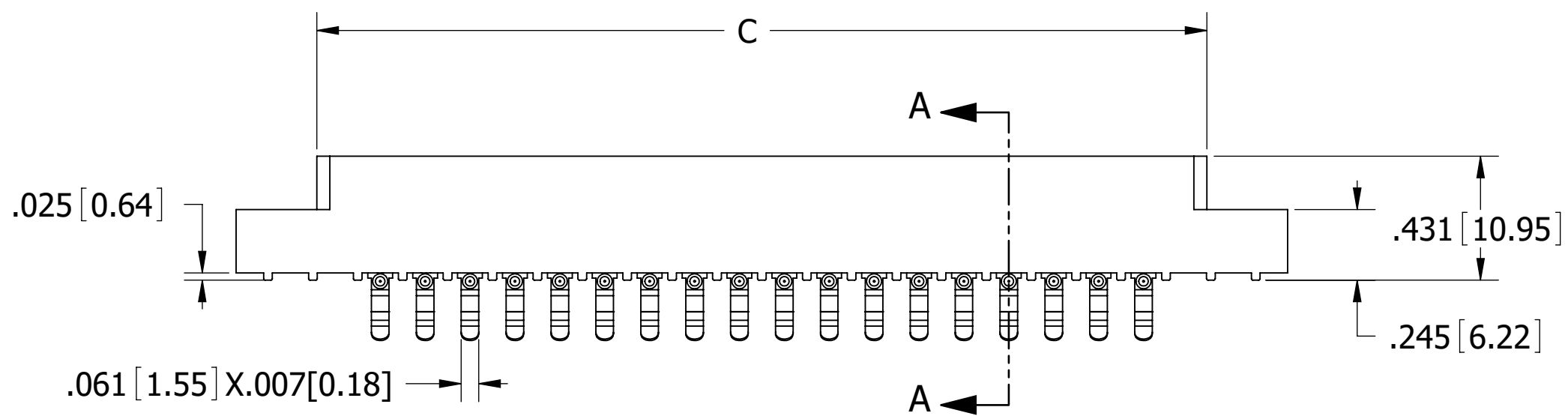
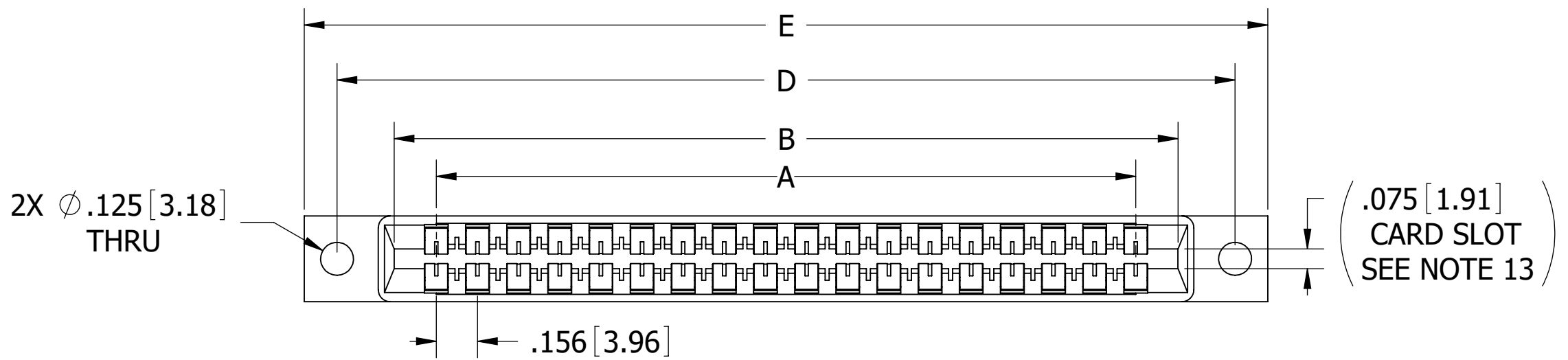


REVISIONS				
REV.	ECO. NO	DESCRIPTION	DATE	BY
C	3801	ADD MPP & PA9T MATERIAL OPTION AND 'FLOATING BOBBIN' OPTION, OBSOLETE DWG C11677 (REPLACE WITH C11853)	1/16/2018	JH
D	4350	ADD S2837 & NOTE 16	4/7/2021	JH

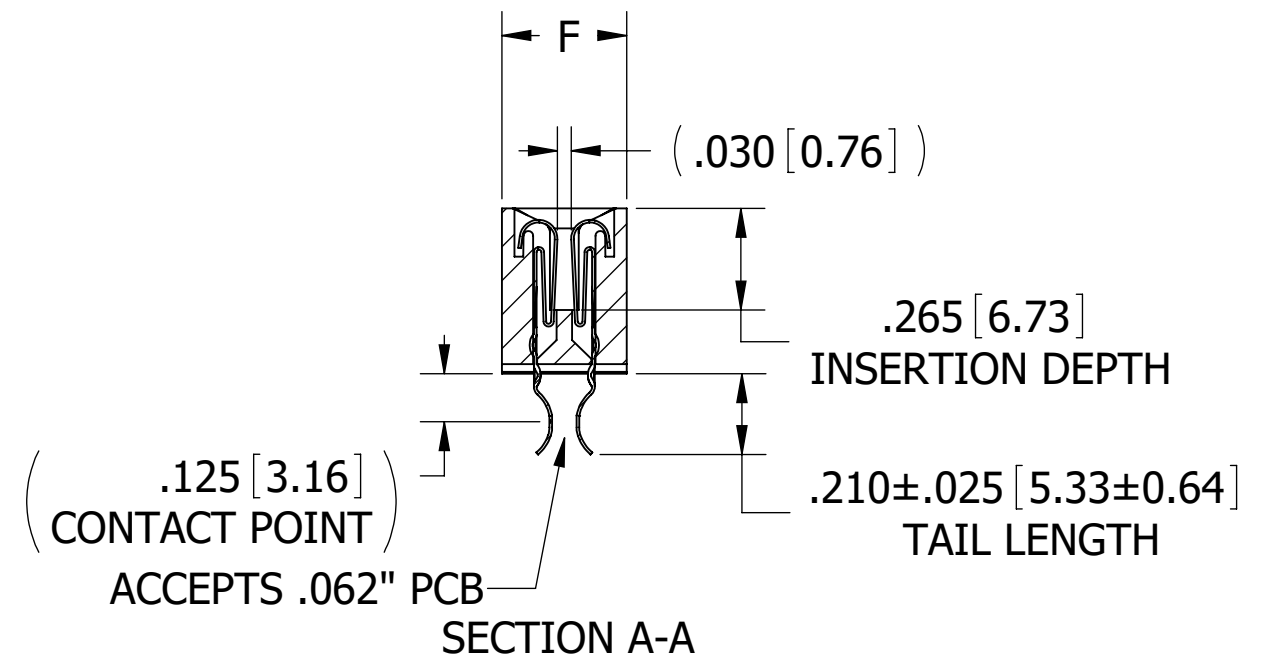
**CONTACT MARKING:**  
 (LETTERS G, I, O & Q NOT USED)  
 SIZE 02 THRU 25  
 1 2 3... 23 24 25  
 A B C... AA BB CC  
 SIZE 28 & 44  
 1 2 3... 23 24 25  
 A B C... A B C  
 SIZE 36 & 43  
 A B C... A B C  
 1 2 3... 23 24 25



CONTACT ID.  
SCALE 4 : 1



MP \_ \_ - \_ 156 - \_ \_ - DSE - 1 \_ \_ \_



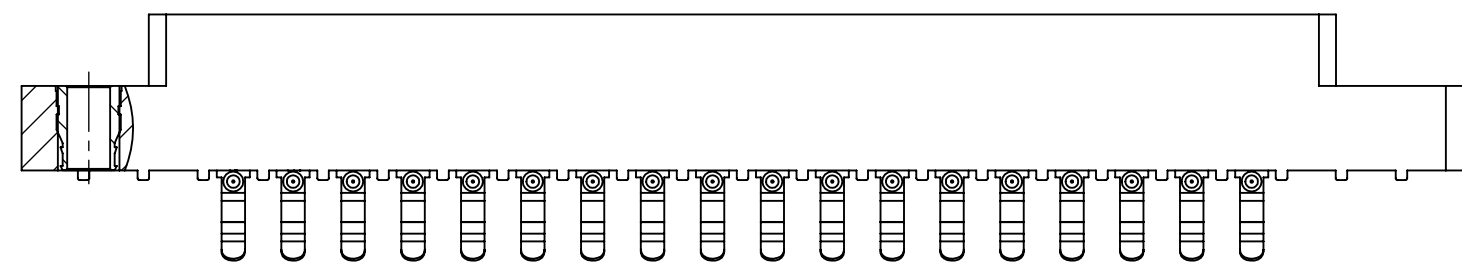
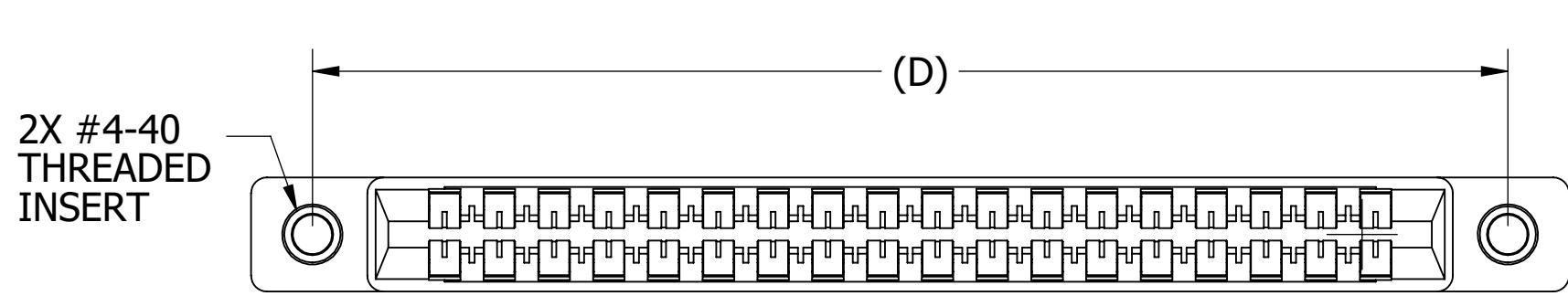
- NOTES:**
- INSULATOR MATERIAL: SEE PART NUMBER CODING
  - CONTACT MATERIAL: SEE PART NUMBER CODING
  - PLATING: .SEE PART NUMBER CODING
  - OPERATING TEMPERATURE: SEE PART NUMBER CODING
  - PROCESSING TEMP: SEE PART NUMBER CODING
  - UL FLAMMABILITY RATING: 94V-0
  - OPERATING VOLTAGE: 950 VAC
  - CURRENT RATING: 3 AMP
  - CONTACT RESISTANCE: 30 MILLI OHMS MAX
  - INSULATION RESISTANCE: 5000 MEGA OHMS
  - DURABILITY: 500 CYCLES MIN
  - CONNECTOR IDENTIFICATION: THE PART SHALL BE MARKED WITH A PART NUMBER AND LOT CODE
  - BOARD THICKNESS ACCOMMODATED: .062 ± .008 [1.57 ± 0.20]
  - INSERTION FORCE: 16 OZ MAX PER CONTACT PAIR WHEN USING A .062 [1.57] TEST BLADE  
INTERNAL INSPECTION TO BE PER SULLIN'S WORK INSTRUCTION WI-8.6-03
  - WITHDRAWAL FORCE: 1 OZ MIN PER CONTACT PAIR USING .062 [1.57] TEST BLADE
  - MODIFICATION: MICRO PLASTICS FLARED, CARD EXTENDER BEND FOR LOW PROFILE CONNECTOR, .055" INSIDE DIMENSION FOR .062" PCB. REVERSE CONTACT ID FOR 36 AND 43 POSITION

REF: \_ \_ M \_ DRK \_ P13, P69, S1077, S1165, S2837

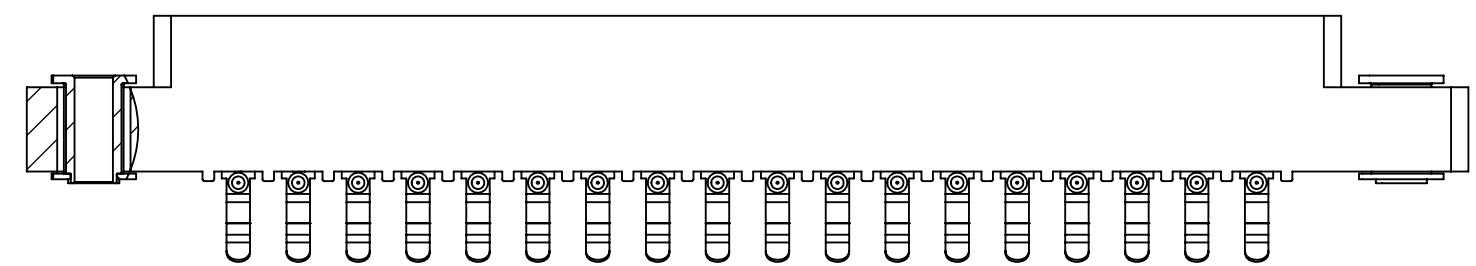
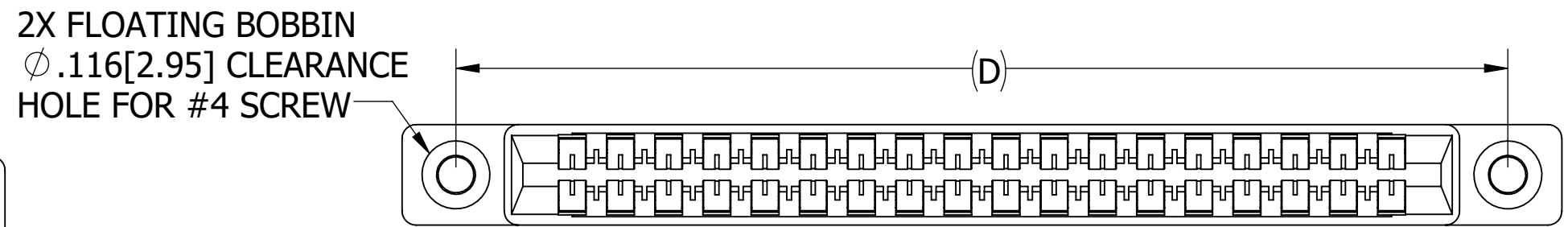
**CUSTOMER COPY**



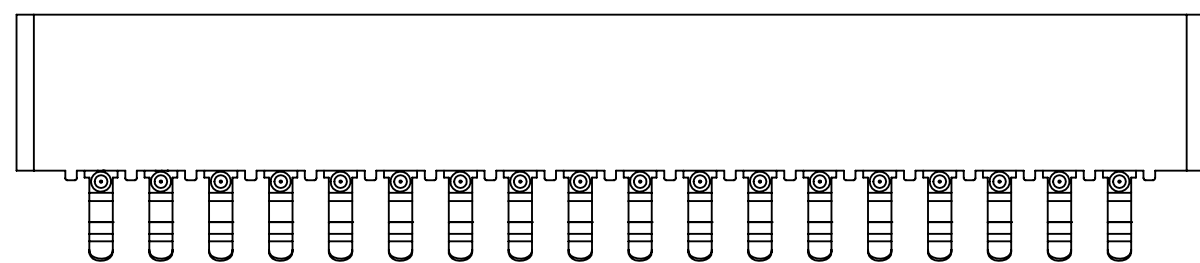
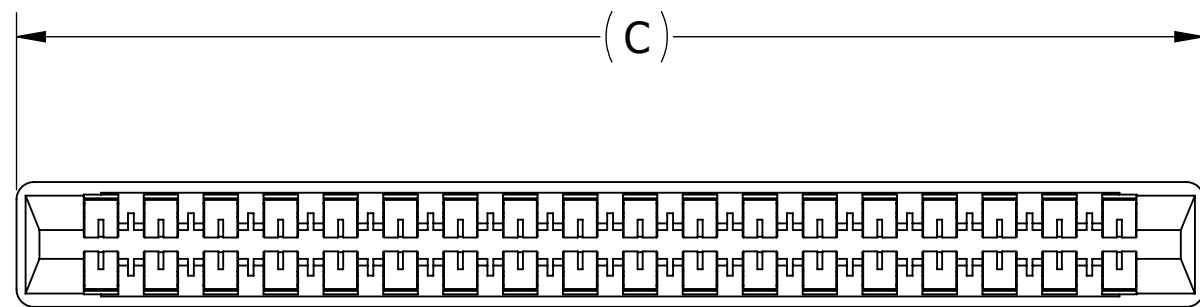
UNLESS OTHERWISE SPECIFIED: DIMENSIONS ARE IN INCHES [MM]		DRAWN	DATE	NAME		
TOLERANCES: ANGULAR: ± 1° DECIMALS .XX = ± .02 [ .5] .XXX = ± .005 [ .13] .XXXX = ± .0005 [ .013]			07/29/11	SE		
<small>THE INFORMATION HEREIN CONTAINS PROPRIETARY INFORMATION OF SULLINS ELECTRONICS AND IS NOT TO BE REPRODUCED, USED OR DISCLOSED TO OTHERS FOR ANY PURPOSE EXCEPT AS SPECIFICALLY AUTHORIZED IN WRITINGS BY AN OFFICER OF SULLINS ELECTRONICS.</small>					TITLE CARD EDGE, .156 CC LP	
					PART NUMBER MP _ _ - 156 - _ _ - DSE - _ _ _	
SIZE	CAGE CODE	DWG. NO.		REV		
C	54453	C11853		D		
SCALE: 2:1			SHEET 1 OF 3			



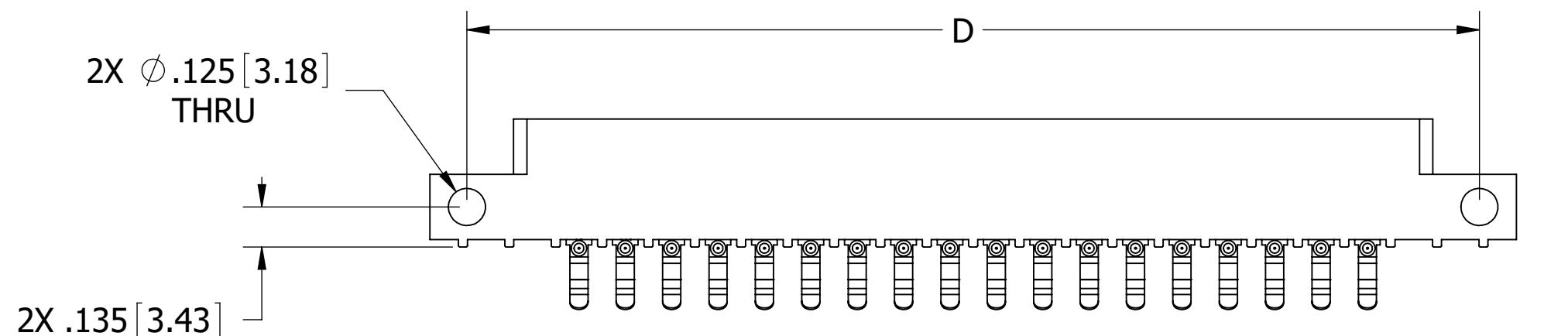
**MP\_\_ - \_ 156 - \_ - DSE - 2\_\_ - -**



**MP\_\_ - \_ 156 - \_ - DSE - 3\_\_ - -**



**MP\_\_ - \_ 156 - \_ - DSE - 4\_\_ - -**



**MP\_\_ - \_ 156 - \_ - DSE - 8\_\_ - -**

# CUSTOMER COPY



UNLESS OTHERWISE SPECIFIED:  
DIMENSIONS ARE IN INCHES [MM]

TOLERANCES:

ANGULAR: ± 1°

DECIMALS

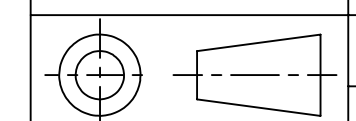
.XX= ± .02 [.5]

.XXX= ± .005 [.13]

.XXXX= ± .0005 [.013]

DRAWN	DATE	NAME
	07/29/11	SE

THE INFORMATION HEREIN CONTAINS  
PROPRIETARY INFORMATION OF  
SULLINS ELECTRONICS AND IS NOT  
TO BE REPRODUCED, USED OR  
DISCLOSED TO OTHERS FOR ANY  
PURPOSE EXCEPT AS SPECIFICALLY  
AUTHORIZED IN WRITING BY AN  
OFFICER OF SULLINS ELECTRONICS.



TITLE  
**CARD EDGE, .156 CC LP**

PART NUMBER  
**MP\_\_ - \_ 156- \_ -DSE- \_ - -**

SIZE	CAGE CODE	DWG. NO.	REV
C	54453	C11853	D

SCALE: 2:1 SHEET 2 OF 3

PART NUMBER	NO. OF POS.	A ± .008[0.20]		B ±.008[0.20]		C ±.015[0.38]		D ±.010[0.25]		E ±.020[0.51]		E ±.020[0.51]		F +.005 [0.13]/-.015 [0.38]			
		IN	MM	IN	MM	IN	MM	IN	MM	IN	MM	IN	MM	IN	MM		
		MP- 156-02-DSE-	2	0.156	3.96	0.476	12.09	0.596	15.14	MOUNTING OPTION '4' ONLY							
MP- 156-03-DSE-	3	0.312	7.92	0.632	16.05	0.752	19.10										
MP- 156-06-DSE-	6	0.780	19.81	1.100	27.94	1.220	30.99	1.533	38.94	1.782	45.26	1.882	47.80				
MP- 156-08-DSE-	8	1.092	27.74	1.412	35.86	1.532	38.91	1.845	46.86	2.094	53.19	2.194	55.73				
MP- 156-10-DSE-	10	1.404	35.66	1.724	43.79	1.844	46.84	2.157	54.79	2.406	61.11	2.506	63.65				
MP- 156-11-DSE-	11	1.560	39.62	1.880	47.75	2.000	50.80	2.313	58.75	2.562	65.07	2.662	67.61				
MP- 156-12-DSE-	12	1.716	43.59	2.036	51.71	2.156	54.76	2.469	62.71	2.718	69.04	2.818	71.58				
MP- 156-15-DSE-	15	2.184	55.47	2.504	63.60	2.624	66.65	2.937	74.60	3.186	80.92	3.286	83.46				
MP- 156-18-DSE-	18	2.652	67.36	2.972	75.49	3.092	78.54	3.405	86.49	3.654	92.81	3.754	95.35				
MP- 156-22-DSE-	22	3.276	83.21	3.596	91.34	3.716	94.39	4.029	102.34	4.278	108.66	4.378	111.20				
MP- 156-24-DSE-	24	3.588	91.14	3.908	99.26	4.028	102.31	4.341	110.26	4.590	116.59	4.690	119.13				
MP- 156-25-DSE-	25	3.744	95.10	4.064	103.23	4.184	106.27	4.497	114.22	4.746	120.55	4.846	123.09				
MP- 156-28-DSE-	28	4.212	106.98	4.532	115.11	4.652	118.16	4.965	126.11	5.214	132.44	5.314	134.98	0.438	11.13		
MP- 156-36-DSE-	36	5.460	138.68	5.780	146.81	5.900	149.86	6.213	157.81	6.462	164.13	6.562	166.67	0.500	12.70		
MP- 156-43-DSE-	43	6.552	166.42	6.872	174.55	6.992	177.60	7.305	185.55	7.554	191.87	7.654	194.41				
MP- 156-44-DSE-	44	6.708	170.38	7.028	178.51	7.148	181.56	7.461	189.51	7.710	195.83	7.810	198.37				

FOR CONNECTORS WITH THREADED INSERTS OR FLOATS

**TABLE 1 (PLATING):**

ALL PLATINGS HAVE .000050" MIN NICKEL UNDERPLATE

	CONTACT SURFACE	TERMINATION	PLATING MODIFICATION CODE
MP, MPP	.000010" GOLD OVERALL		OMIT
	.000030" GOLD	.000010" GOLD OVERALL	G
MPSL	.000010" GOLD		.000100" PURE TIN, MATTE
	.000030" GOLD	.000100" PURE TIN, MATTE	GK
MPL	.000100" PURE TIN, MATTE OVERALL		K

1. MPL AVAILABLE WITH PHOSPHOR BRONZE CONTACTS ONLY
2. MP, MPSL AVAILABLE IN PHOSPHOR BRONZE OR BERYLLIUM COPPER
3. MPP = SPINODAL

**TABLE 2 (PHOSPHOR BRONZE CONTACTS): MP, MPL, MPSL**

INSULATOR MATERIAL CODE	OPERATING TEMPERATURE	PROCESSING TEMPERATURE
0, 2, 3	-65°C TO +125°C	WAVE/MANUAL SOLDERING ONLY
1, 5, 6, 7	-65°C TO +125°C	260°C MAX FOR 20 SEC
4	-65°C TO +125°C	260°C MAX FOR 20 SEC

**TABLE 3 (BERYLLIUM COPPER CONTACTS): MP OR MPSL WITH 'Y' MODIFICATION CODE**

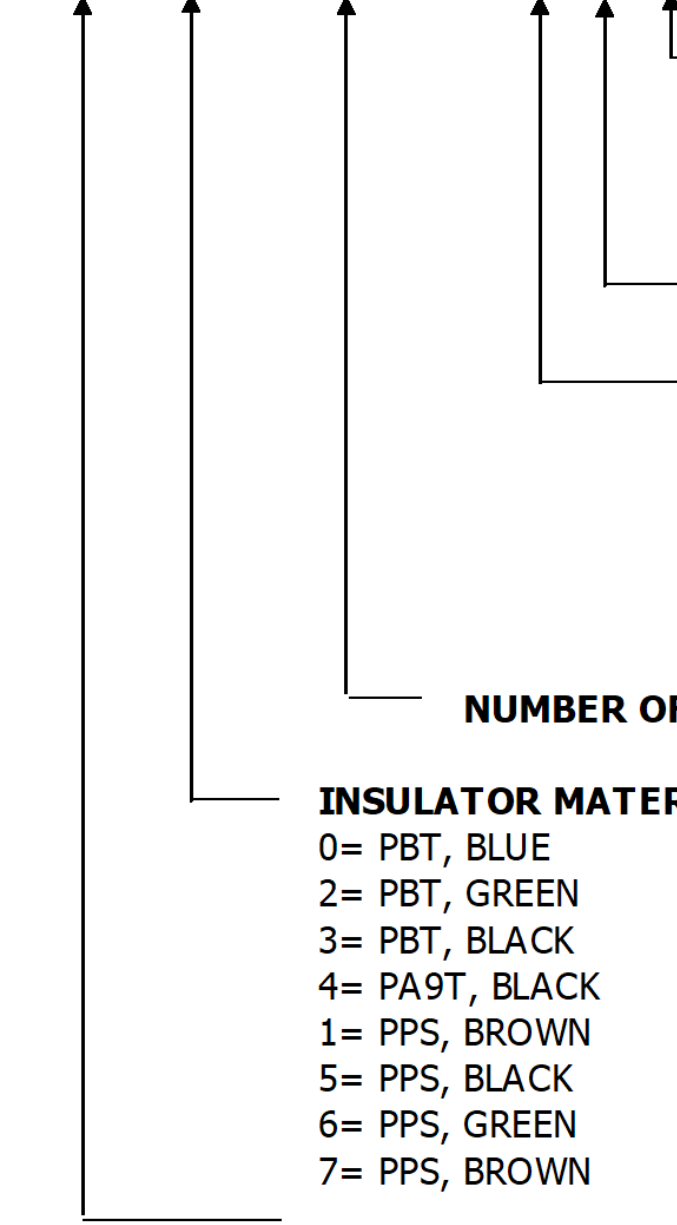
INSULATOR MATERIAL CODE	OPERATING TEMPERATURE	PROCESSING TEMPERATURE
0, 2, 3	-65°C TO +125°C	WAVE /MANUAL SOLDERING ONLY
1, 5, 6, 7	-65°C TO +150°C	260°C MAX FOR 20 SEC
4	-65°C TO +150°C	260°C MAX FOR 20 SEC

**TABLE 4 (SPINODAL CONTACTS): MPP**

INSULATOR MATERIAL CODE	OPERATING TEMPERATURE	PROCESSING TEMPERATURE
1, 5, 6, 7	-65°C TO +200°C	260°C MAX FOR 20 SEC

**PART NUMBER CODING**

MP - 156 - DSE -



**CONTACT MATERIAL**  
 OMIT= PHOSPHOR BRONZE (SEE TABLE 2)  
 Y= BERYLLIUM COPPER (SEE TABLE 3)  
 OMIT WITH 'MPP' PLATING CODE = SPINODAL (SEE TABLE 4)

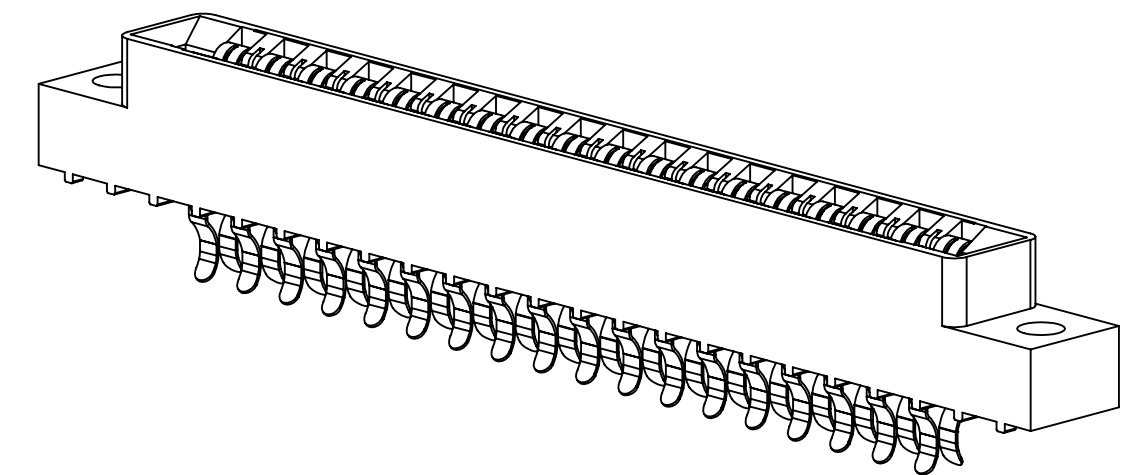
**PLATING MODIFICATION CODE (SEE TABLE 1)**

**MOUNTING STYLE**  
 1= .125" DIA. CLEARANCE HOLES  
 2= #4-40 THREADED INSERT  
 3= FLOATING BOBBIN  
 4= NO MOUNTING EARS  
 8= .125" DIA. SIDE HOLES

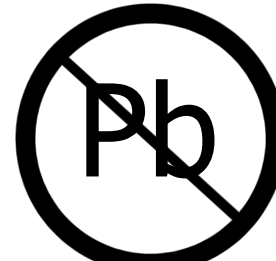
**NUMBER OF POSITIONS**

**INSULATOR MATERIAL**  
 0= PBT, BLUE  
 2= PBT, GREEN  
 3= PBT, BLACK  
 4= PA9T, BLACK  
 1= PPS, BROWN  
 5= PPS, BLACK  
 6= PPS, GREEN  
 7= PPS, BROWN

**PLATING (SEE TABLE 1)**



**CUSTOMER COPY**



RoHS COMPLIANT

UNLESS OTHERWISE SPECIFIED: DIMENSIONS ARE IN INCHES [MM]		DRAWN	DATE	NAME		
			07/29/11	SE		
TOLERANCES:					<small>THE INFORMATION HEREIN CONTAINS PROPRIETARY INFORMATION OF SULLINS ELECTRONICS AND IS NOT TO BE REPRODUCED, USED OR DISCLOSED TO OTHERS FOR ANY PURPOSE EXCEPT AS SPECIFICALLY AUTHORIZED IN WRITING BY AN OFFICER OF SULLINS ELECTRONICS.</small>	
ANGULAR: ± 1°					TITLE CARD EDGE, .156 CC LP	
DECIMALS .XX= ± .02 [.5] .XXX= ± .005 [.13] .XXXX= ± .0005 [.013]					PART NUMBER MP - 156 - DSE -	
SCALE: 2:1		SIZE C	CAGE CODE 54453	DWG. NO. C11853	REV D	
					SHEET 3 OF 3	