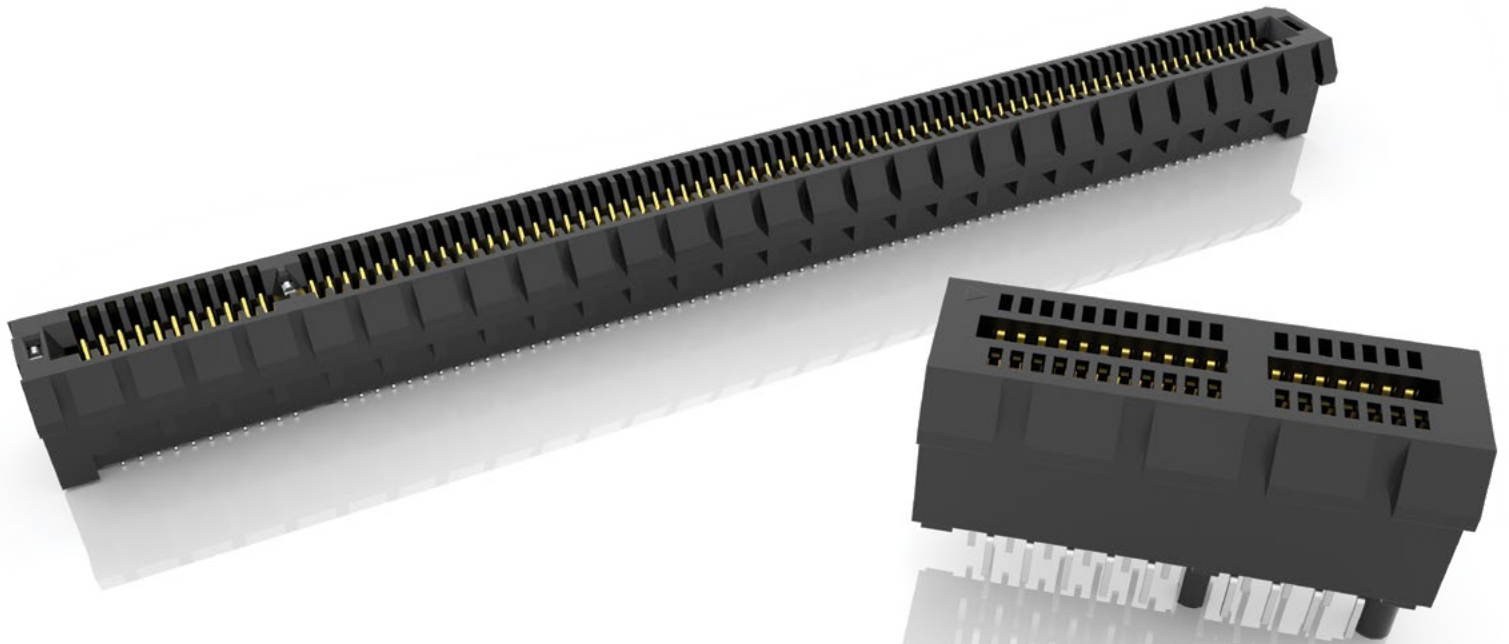




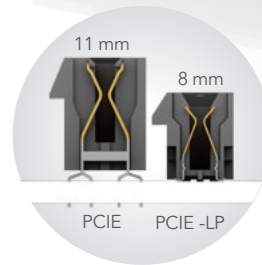
PCI EXPRESS® EDGE CARD SOCKETS

(1.00 mm) .0394" PITCH



FEATURES & BENEFITS

- 1.00 mm pitch
- Supports 1, 4, 8 and 16 PCI Express® links
- PCIe® 3.0 Solution (PCI-E)
- PCIe® 4.0 Solution with low profile design for space savings (PCI-E-LP)
- PCIe® 4.0 with slim body design (PCI-E-G4)
- PCIe® 5.0 Solution with differential pair signaling (PCI-E-G5)
- Vertical, right-angle and edge mount
- Mates with .062" (1.60 mm) thick cards
- Alignment pin and weld tab options



PCI-E® 3.0 & 4.0
Edge Card
connectors



PCI-E® 4.0 slim body
socket with Edge Rate®
contacts (PCI-E-G4)

KEY SPECIFICATIONS

| SERIES | TOTAL PINS (LANES) | INSULATOR MATERIAL | CONTACT MATERIAL | OPERATING TEMP RANGE | CURRENT RATING | VOLTAGE RATING | PCI-E® COMPATIBILITY |
|----------|---|--|------------------|----------------------|----------------|----------------|----------------------|
| PCI-E | 36 (x1), 64 (x4), 98 (x8), 164 (x16) | -TH = Black Nylon -EMS2 & -TH = LCP | Phosphor Bronze | -55 °C to +125 °C | 2.4 A (2 pins) | 215 VAC | 3.0 |
| PCI-E-LP | 36 (x1), 64 (x4), 98 (x8), 164 (x16) | LCP | Phosphor Bronze | -55 °C to +125 °C | 2.1 A (2 pins) | 215 VAC | 4.0 |
| PCI-E-G4 | 36 (x1), 64 (x4), 98 (x8), 164 (x16) | LCP | Copper Alloy | -55 °C to +125 °C | 2.2 A (2 pins) | 300 VAC | 4.0 |
| PCI-E-G5 | 36 (x1), 64 (x4), 98 (x8), 164 (x16) | LCP | Copper Alloy | -55 °C to +125 °C | 3.2 A (2 pins) | 235 VAC | 5.0 |

(1.00 mm) .0394" PITCH • PCI EXPRESS® 4.0 SOCKET

| PCIE | G4 | NUMBER OF LANES | 01 | PLATING OPTION | DV | OPTION 1 | OPTION 2 | PACKAGING |
|------|----|-----------------|----|----------------|----|----------|----------|-----------|
|------|----|-----------------|----|----------------|----|----------|----------|-----------|

-01, -04,
-08, -16

-F
= Gold flash on contact, Matte Tin on tail

-S
= 30 μ" (0.76 μm) Gold on contact, Matte Tin on tail

-A
= Alignment Pin (Not available with -WT)

-WT
= Weld Tab (Not available with -A)

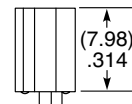
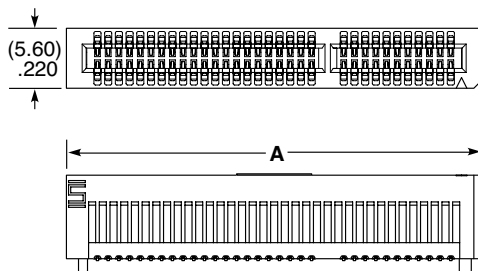
-K
= (7.00 mm) .275" DIA Polyimide Pick & Place Pad

(For -16 lanes only leave blank for Tray Packaging)

-TR
= Tape & Reel ("X"R required with -01, -04, -08 lanes)

-FR
= Full Reel Tape & Reel (must order max. quantity per reel; contact Samtec for quantity breaks) ("X"R required with -01, -04, -08 lanes)

PCIE-G4
Card Mates:
(1.60 mm)
.062" card



| NUMBER OF LANES | A |
|-----------------|---------------|
| -01 | (24.80) .976 |
| -04 | (38.80) 1.528 |
| -08 | (55.80) 2.197 |
| -16 | (88.80) 3.496 |

View complete specifications at: samtec.com?PCIE-G4

(1.00 mm) .0394" PITCH • PCI EXPRESS® 5.0 SOCKET

| PCIE | G5 | NUMBER OF LANES | 01 | PLATING OPTION | TYPE | OPTION | PACKAGING |
|------|----|-----------------|----|----------------|------|--------|-----------|
|------|----|-----------------|----|----------------|------|--------|-----------|

-01, -04,
-08, -16

-F
= Gold flash on contact, Matte Tin on tail

-S
= 30 μ" (0.76 μm) Gold on contact, Matte Tin on tail

-DP-A
= Vertical

-EM
= Edge Mount

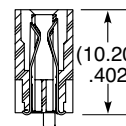
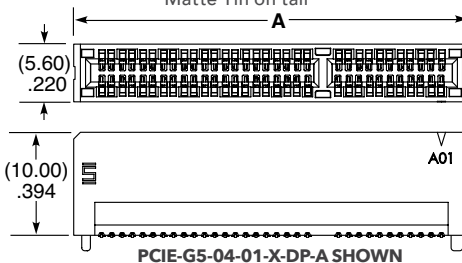
-WT
= Weld Tab

(For -16 lanes only leave blank for Tray Packaging)

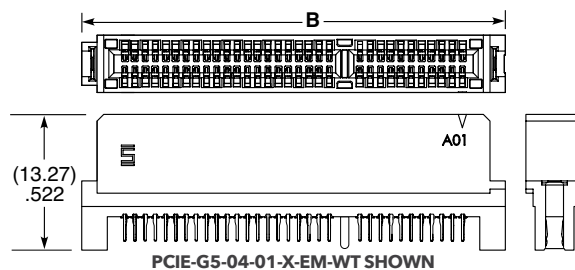
-TR
= Tape & Reel ("X"R required with -01, -04, -08 lanes)

-FR
= Full Reel Tape & Reel (must order max. quantity per reel; contact Samtec for quantity breaks) ("X"R required with -01, -04, -08 lanes)

PCIE-G5
Card Mates:
(1.60 mm)
.062" card



| NUMBER OF LANES | A | B |
|-----------------|---------------|---------------|
| -01 | (24.40) .961 | (27.40) 1.079 |
| -04 | (38.40) 1.512 | (41.40) 1.630 |
| -08 | (55.40) 2.181 | (58.40) 2.299 |
| -16 | (88.40) 3.480 | (91.40) 3.598 |



PCI-SIG®, PCI Express® and the PCIe® design marks are registered trademarks and/or service marks of PCI-SIG.

Note:
Some lengths, styles and options are non-standard, non-returnable.

View complete specifications at: samtec.com?PCIE-G5