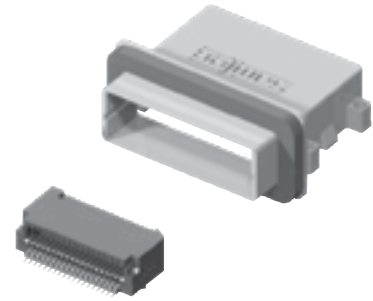




EYE
SPEEDHD
I/O SYSTEM



RUGGED LATCHING HIGH-SPEED SYSTEM

(0.80 mm) .0315" PITCH • ERI8/ERC SERIES

ERI8

Mates:
EPLSP

SPECIFICATIONS

Insulator Material:
Black LCP
Terminal Material:
BeCu
Plating:
Au or Sn over
50 μ" (1.27 μm) Ni
Current Rating:
1.7 A per pin
(2 pins powered)
Voltage Rating:
225 VAC/320 VDC
Operating Temp Range:
-55 °C to +125 °C



PROCESSING

Lead-Free Solderable:
Yes
SMT Lead Coplanarity:
(0.10 mm) .004" max

ERI8	NO. OF POSITIONS	PLATING OPTION	D	RA	OTHER OPTION
------	------------------	----------------	---	----	--------------

-019
= 9 Pairs,
5 Power,
19 positions

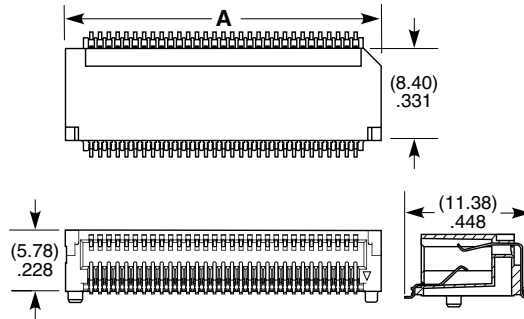
-031
= 17 Pairs,
5 Power,
31 positions

-S
= 30 μ" (0.76 μm)
Gold on contact,
Matte Tin on tail

-TR
= Tape & Reel

-FR
= Full Reel Tape & Reel
(must order max. quantity
per reel; contact Samtec
for quantity breaks)

NO. OF POSITIONS	A
-019	(19.08) .751
-031	(28.68) 1.13



View complete specifications at: samtec.com?ERI8

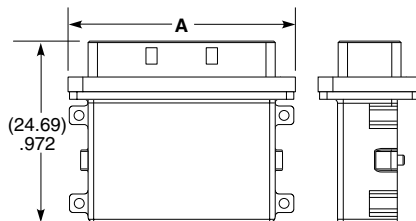
SERIES	NO. OF POSITIONS	OPTION
--------	------------------	--------

ERC
= Cage

-019, -031
= Number of Positions

-01
= Without Gasket

-02
= With Gasket



NO. OF POSITIONS	A
-019	(30.55) 1.203
-031	(40.15) 1.58

View complete specifications at: samtec.com?ERC

Notes:
Active equalization
reference design for
Eye Speed® I/O system
see www.samtec.com?EPLSP

Some lengths, styles and
options are non-standard,
non-returnable.