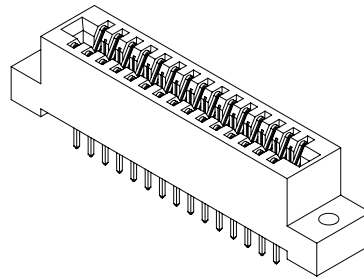




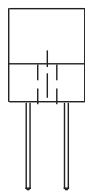
**.125" [3.18 mm] Contact Centers, .610" [15.49 mm] Insulator Height,  
Dip Solder/Wire Wrap/Right Angle for .093" [2.36 mm] or .125" [3.18 mm] Mating PCB**

## SPECIFICATIONS

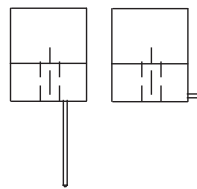
- Accommodates .093" ± .008" [2.36 mm ± 0.20 mm] PC board or .125" ± .008" [3.18 mm ± 0.20 mm] mating PCB
- PBT, PPS or PA9T insulator
- Molded-in key available
- 3 Amps current rating for one contact energized
- 30 milli Ohms maximum at rated current
- UL Flammability Rating: 94V-0



## READOUT

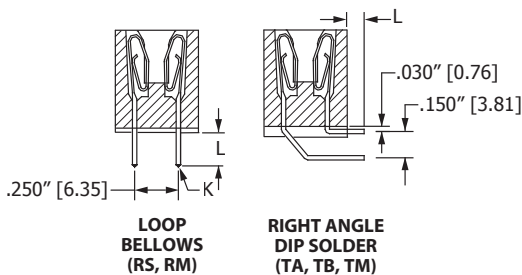


**DUAL (D)**



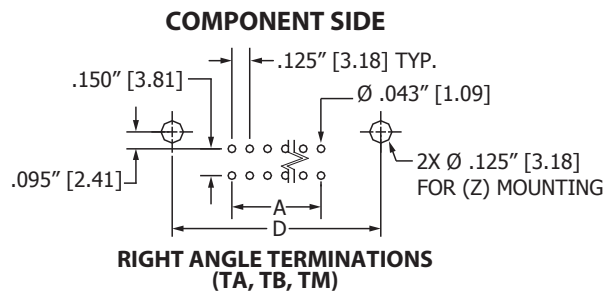
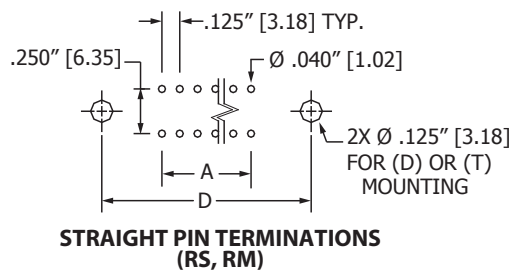
**HALF LOADED (H)**

## TERMINATION TYPE

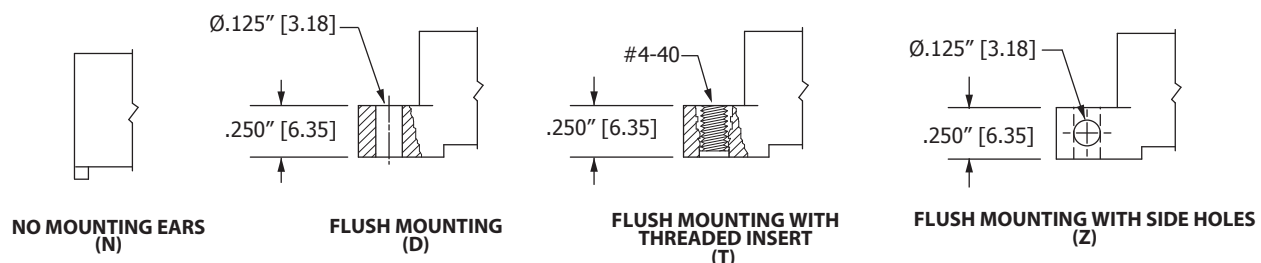


TERMINATION TYPE	POST CROSS SECTION (K)	POST LENGTH L ± .025" [0.64]	FITS MIN. HOLE SIZE
<b>RS</b> DIP SOLDER	.025" [0.64] SQ.	.190" [4.83]	.040" [1.02]
<b>RM</b> WIRE WRAP	.025" [0.64] SQ.	.560" [14.20]	.040" [1.02]
<b>TA</b> RIGHT ANGLE	.025" [0.64] SQ.	.100" [2.54]	.043" [1.09]
<b>TB</b> RIGHT ANGLE	.025" [0.64] SQ.	.180" [4.57]	.043" [1.09]
<b>TM</b> RIGHT ANGLE	.025" [0.64] SQ.	.250" [6.35]	.043" [1.09]

## PCB LAYOUT



## MOUNTING STYLE





**.125" [3.18 mm] Contact Centers, .610" [15.49 mm] Insulator Height, Dip Solder/Wire Wrap/Right Angle for .093" [2.36 mm] or .125" [3.18 mm] Mating PCB**

### PART NUMBER OPTIONS

#### MATERIALS (INSULATOR/CONTACT)

- E = PBT/Phosphor Bronze(Standard)
  - R = PPS/Phosphor Bronze
  - G = PA9T/Phosphor Bronze
  - H = PBT & Beryllium Copper
  - A = PPS & Beryllium Copper
  - J = PA9T & Beryllium Copper
- (Consult factory for other materials.)  
Refer to Page 7 for Operating/Processing Temperatures

#### CONTACT FINISH - RoHS Compliant

All platings are Lead Free and have .000050" Nickel underplate

Contact Surface	Termination
B = .000010" Gold	.000100" Pure Tin, Matte
C = .000030" Gold	.000100" Pure Tin, Matte
G = .000010" Gold	.000005" Gold
Y = .000030" Gold	.000005" Gold
Contact Surface	Overall Plating
S = .000010" Gold	.000010" Gold
M = .000030" Gold	.000010" Gold
E = .000100" Pure Tin, Matte	.000100" Pure Tin, Matte

#### CONTACT CENTERS

- A = .125" [3.18 mm]

**E B A 50 D R M D - S273**

#### MODIFICATION CODE (Consult Factory)

- S273 = FOR .093" ± .008" [2.36 mm ± 0.20 mm] THICK MATING PCB
- S664 = FOR .125" ± .008" [3.18 mm ± 0.20 mm] THICK MATING PCB

#### MOUNTING STYLE (Opposite Page)

- N = No Mounting
- D = Flush Mounting
- T = Flush Mounting With Threaded Inserts
- Z = Flush Mounting With Side Holes

#### TERMINATION TYPE (Opposite Page)

- RS = .025" [0.64 mm] Square Dip Solder
- RM = .025" [0.64 mm] Square Wire Wrap
- TA, TB, TM = .025" [0.64 mm] Square Right Angle

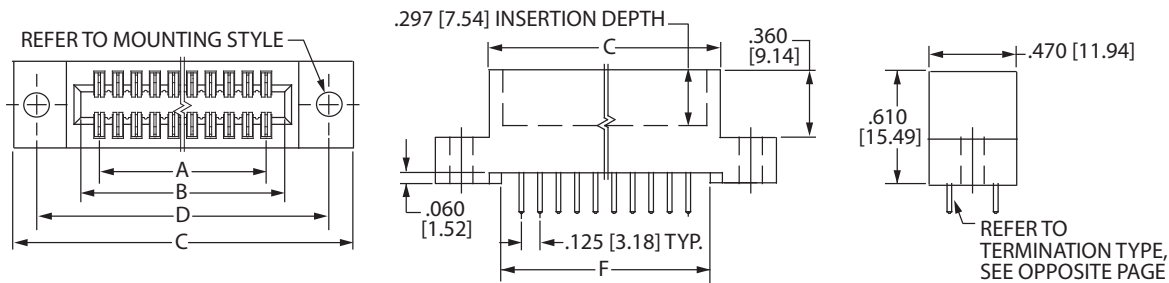
#### READOUT (Opposite Page)

- D = Dual
- H = Half Loaded

#### NUMBER OF CONTACT POSITIONS

See Chart Below

### DIMENSIONS Dimensions in [ ] are in millimeters, all others are in inches.



Tolerances on non-critical dimensions may vary slightly due to shrinkage differential per insulator material; Consult factory.

POSITIONS/ CONTACTS	INCHES						MILLIMETERS					
	A±.008	B±.008	C±.015	D±.010	E±.020	F±.015	A±0.20	B±0.20	C±0.38	D±0.25	E±0.51	F±0.38
06/12*	0.625	0.875	1.035	1.295	1.555	0.915	15.88	22.23	26.29	32.89	39.50	23.24
08/16*	0.875	1.125	1.285	1.545	1.805	1.165	22.23	28.58	32.64	39.24	45.85	29.59
10/20*	1.125	1.375	1.535	1.795	2.055	1.415	28.58	34.93	38.99	45.59	52.20	35.94
14/28*	1.625	1.875	2.035	2.295	2.555	1.915	41.28	47.63	51.69	58.29	64.90	48.64
15/30*	1.750	2.000	2.160	2.420	2.680	2.040	44.45	50.80	54.86	61.47	68.07	51.82
18/36*	2.125	2.375	2.535	2.795	3.055	2.415	53.98	60.33	64.39	70.99	77.60	61.34
22/44*	2.625	2.875	3.035	3.295	3.555	2.915	66.68	73.03	77.09	83.69	90.30	74.04
24/48*	2.875	3.125	3.285	3.545	3.805	3.165	73.03	79.38	83.44	90.04	96.65	80.39
25/50	3.000	3.250	3.410	3.670	3.930	3.290	76.20	82.55	86.61	93.22	99.82	83.57
28/56*	3.375	3.625	3.785	4.045	4.305	3.665	85.73	92.08	96.14	102.74	109.35	93.09
30/60	3.625	3.875	4.035	4.295	4.555	3.915	92.08	98.43	102.49	109.09	115.70	99.44
31/62*	3.750	4.000	4.160	4.420	4.680	4.040	95.25	101.60	105.66	112.27	118.87	102.62
32/64	3.875	4.125	4.285	4.545	4.805	4.165	98.43	104.78	108.84	115.44	122.05	105.79
35/70*	4.250	4.500	4.660	4.920	5.180	4.540	107.95	114.30	118.36	124.97	131.57	115.32
36/72	4.375	4.625	4.785	5.045	5.305	4.665	111.13	117.48	121.54	128.14	134.75	118.49
40/80*	4.875	5.125	5.285	5.545	5.805	5.165	123.83	130.18	134.24	140.84	147.45	131.19
43/86*	5.250	5.500	5.660	5.920	6.180	5.540	133.35	139.70	143.76	150.37	156.97	140.72
44/88*	5.375	5.625	5.785	6.045	6.305	5.665	136.53	142.88	146.94	153.54	160.15	143.89
49/98*	6.000	6.250	6.410	6.670	6.930	6.290	152.40	158.75	162.81	169.42	176.02	159.77
50/100	6.125	6.375	6.535	6.795	7.055	6.415	155.58	161.93	165.99	172.59	179.20	162.94

\* Consult factory for availability.