

98 CKT  
SINGLE BAY EXAMPLE

172066-\*\*\*

NUMBER OF CIRCUITS  
PLATING:  
0 = 0.38 MICROMETERS (15 MICRONS) GOLD  
9 = 0.76 MICROMETERS (30 MICRONS) GOLD

- 1 = 3 GROUND CLIPS / GROUND WAFERS NOT SINGULATED
- 2 = 3 GROUND CLIPS / GROUND WAFERS SINGULATED
- 3 = 2 CLIPS ON TOP / GROUND WAFERS NOT SINGULATED
- 5 = 2 CLIPS ON TOP / GROUND WAFERS SINGULATED
- 6 = NO GROUND CLIPS / GROUND WAFERS NOT SINGULATED
- 7 = NO GROUND CLIPS / GROUND WAFERS SINGULATED

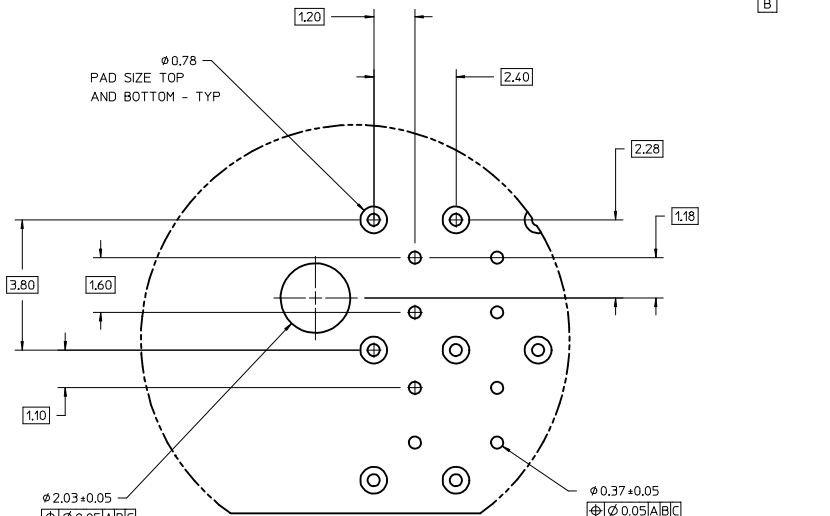
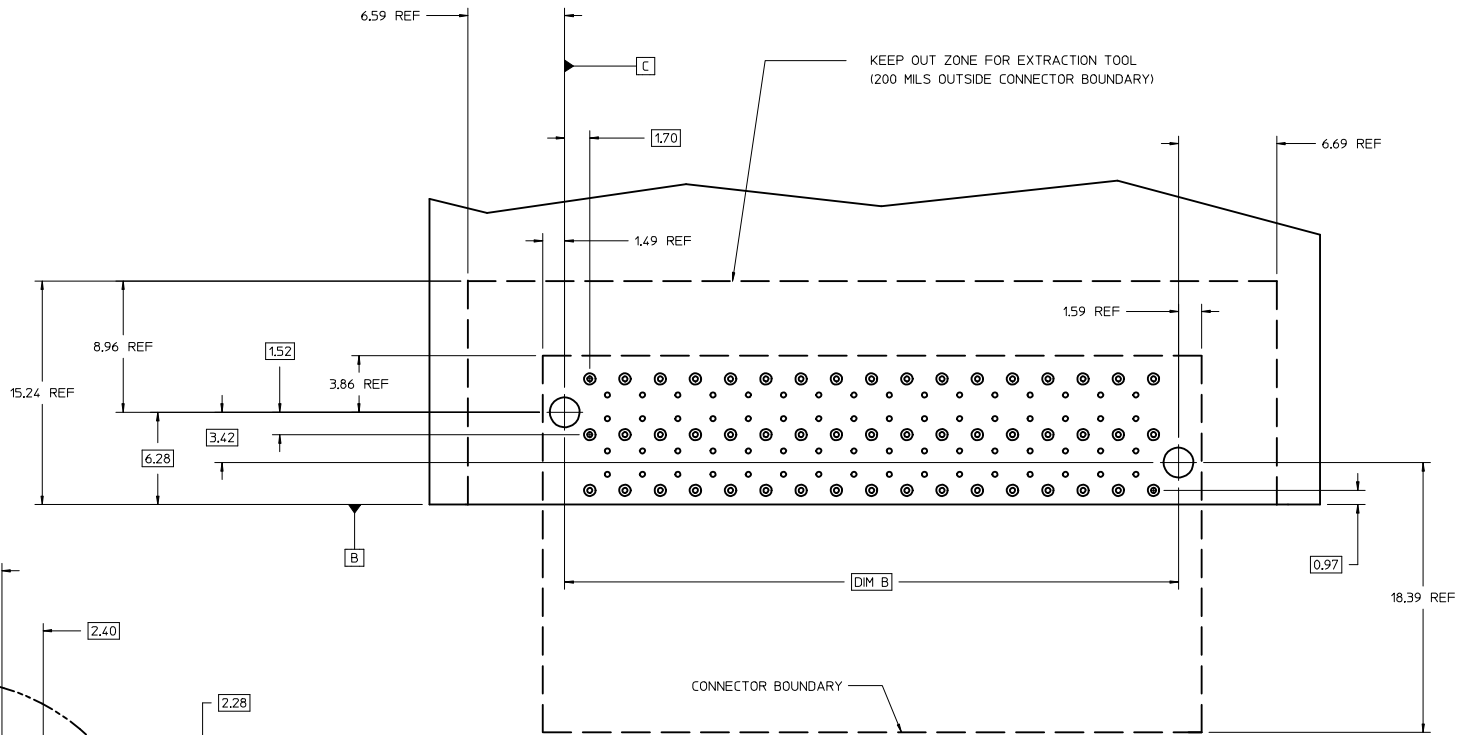
NOTES:

1. MATERIAL -  
CONNECTOR HOUSING: GLASS FILLED LCP, 94V-0, BLACK  
OVERMOLDING ON TERMINALS: GLASS FILLED LCP, 94V-0, BLACK  
TERMINALS: COPPPER ALLOY, SPRING TEMPER  
GROUNDING BAR: COPPER ALLOY  
STIFFENER: 400 SERIES STAINLESS
2. TERMINAL FINISH (LEAD-FREE)  
CONTACT AREA: 0.384mm OR 0.764mm HARD GOLD OVER 3.84mm MIN NICKEL,  
COMPLIANT PIN AREA: .075-1.504mm MATTE TIN OVER 1.254mm MIN. NICKEL.
3. REFER TO PRODUCT SPEC, PS-170305-0001 FOR ALL ELECTRICAL, MECHANICAL AND ENVIROMENTAL SPECIFICATIONS.
4. REFER TO PK-170305-0001 FOR ALL PACKAGING SPECIFICATIONS.
5. REFER TO AS-170305-0001 FOR ALL APPLICATION INFORMATION.
6. REFER TO AS-170305-0002 FOR ROUTING GUIDE RECOMMENDATIONS.
7. DATE CODE AND ASSEMBLY PART NUMBER TO BE LASER ETCHED OR ON LABEL LOCATED ON THE BOTTOM OF THE PART. DATE CODE TO BE IN THE FORMAT OF, DAY OF THE YEAR AND LAST DIGIT OF THE YEAR, (DDDDYY).

PART NUMBER	CIRCUITS	TOOLED	BAY	DIM A	BAY ONE	BAY TWO	BAY THREE	DIM B	DIM C	DIM D	DIM E
172066-**50	50	NO	SINGLE	25.69	50 CIRCUITS	N/A	N/A	22.60	21.00	N/A	N/A
172066-**62	62	NO	SINGLE	30.49	62 CIRCUITS	N/A	N/A	27.40	25.80	N/A	N/A
172066-**80	80	NO	SINGLE	37.69	80 CIRCUITS	N/A	N/A	34.60	33.00	N/A	N/A
172066-**98	98	YES	SINGLE	44.89	98 CIRCUITS	N/A	N/A	41.80	40.20	N/A	N/A
172066-**18	118	NO	DOUBLE	54.49	56 CIRCUITS	62 CIRCUITS	N/A	51.40	23.70	26.10	N/A
172066-**54	154	NO	DOUBLE	68.89	74 CIRCUITS	80 CIRCUITS	N/A	65.80	30.90	33.30	N/A
172066-**74	174	NO	TRIPLE	78.49	56 CIRCUITS	62 CIRCUITS	56 CIRCUITS	75.40	26.40	23.70	50.10
172066-**16	216	NO	TRIPLE	95.29	70 CIRCUITS	76 CIRCUITS	70 CIRCUITS	92.20	32.00	29.30	61.30
172066-**46	246	NO	TRIPLE	107.29	80 CIRCUITS	86 CIRCUITS	80 CIRCUITS	104.20	36.00	33.30	69.30

<b>REV. PCB 0 G. 10 SHT 4</b> EC NO: UCP2015-3035 D: DORNSVANG01 2015/01/28 CHYKMWOLF 2015/01/28 APPROX MILLER 2015/02/02 DESCRIPTION	QUALITY SYMBOLS	GENERAL TOLERANCES (UNLESS SPECIFIED)	DIMENSION STYLE	SCALE	DESIGN UNITS	THIRD ANGLE PROJECTION	
	$\nabla=0$ $\nabla=0$ $\nabla=0$	mm INCH 4 PLACES ±---+--- 3 PLACES ±---+--- 2 PLACES ±0.13+--- 1 PLACE ±0.25+--- 0 PLACE ±---+---	MM ONLY	4:1	METRIC	DRAWN BY DATE MWOLFE 2014/08/01 CHECKED BY DATE MPOFF 2014/08/01 APPROVED BY DATE SMILLER 2014/08/15	TITLE .062 COPLANAR SALES DRAWING
	ANGULAR ±1/2° DRAFT WHERE APPLICABLE MUST REMAIN WITHIN DIMENSIONS	MATERIAL NO. <b>SEE TABLE</b>	DOCUMENT NO. <b>SD-172066-001</b>	SHEET NO. <b>1 OF 6</b>			
	THIS DRAWING CONTAINS INFORMATION THAT IS PROPRIETARY TO MOLEX INCORPORATED AND SHOULD NOT BE USED WITHOUT WRITTEN PERMISSION						

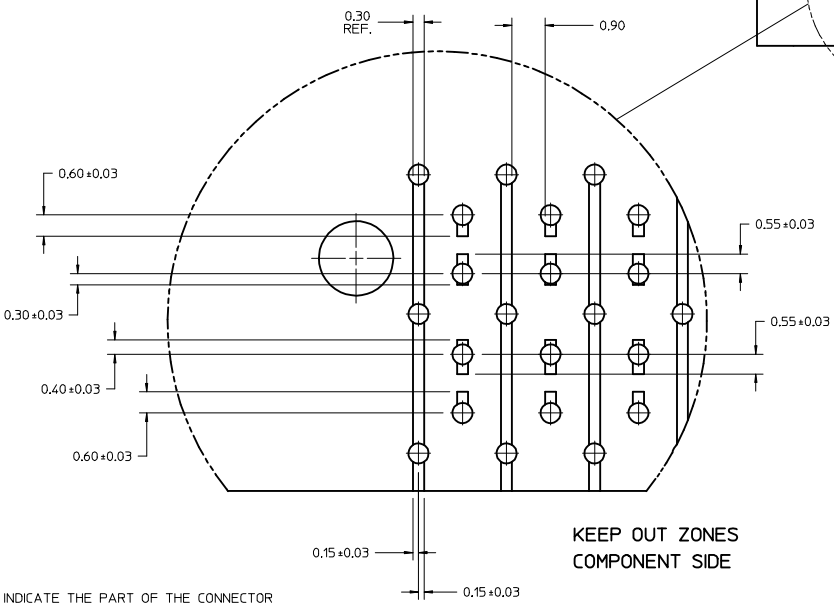
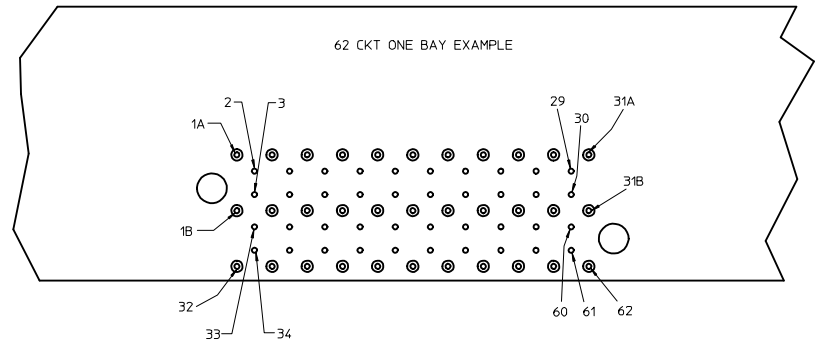
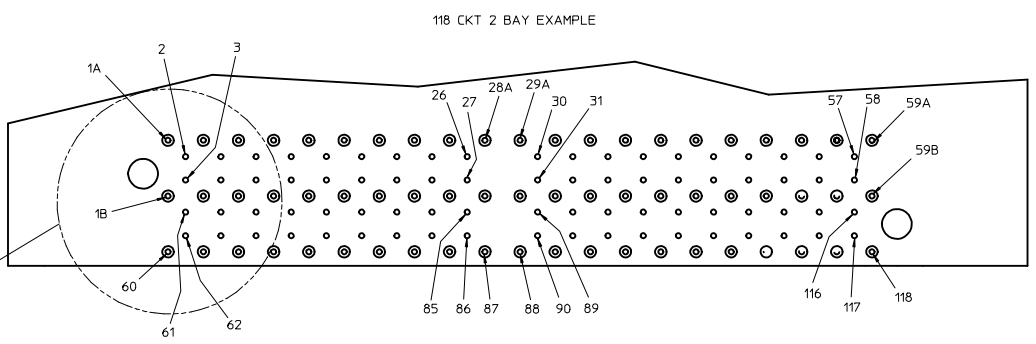
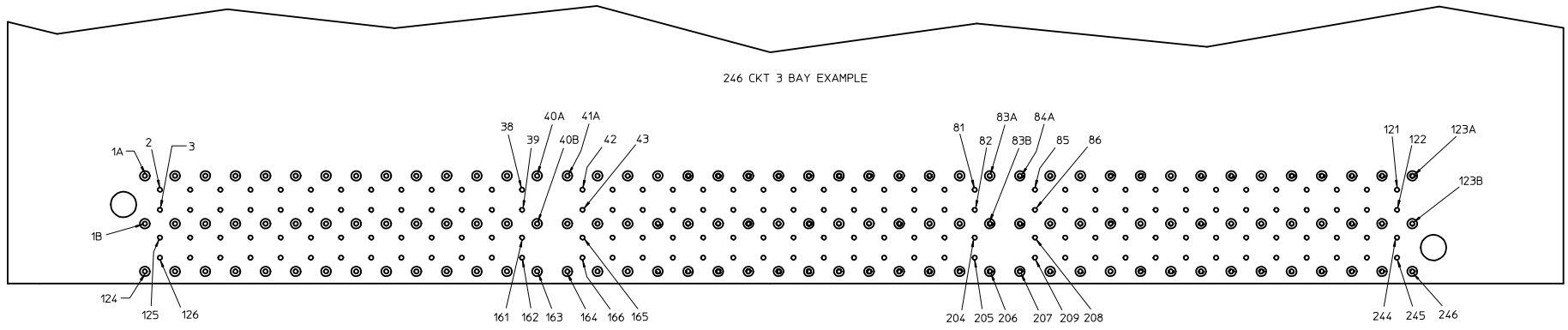




RECOMMENDED TAIL PATTERN  
SEE AS-170305-0002 FOR  
INTERNAL ANTI-PAD SPECIFICATION  
DETAIL 1  
SCALE 14:1

98 CKT  
SINGLE BAY EXAMPLE

SEE SHEET 1 EC NO: UCP2015-3035 DRAWNS/VANG01 2015/01/28 CHKD/MWLF 2015/01/28 APPR/SMLLR 2015/02/02	QUALITY SYMBOLS	GENERAL TOLERANCES (UNLESS SPECIFIED)	DIMENSION STYLE	SCALE	DESIGN UNITS	THIRD ANGLE PROJECTION
	∇=0 ∇=0 ∇=0	4 PLACES ±--- ±--- 3 PLACES ±--- ±--- 2 PLACES ±0.13 ±--- 1 PLACE ±0.25 ±--- 0 PLACE ±--- ±---	mm INCH ANGULAR ±1/2° DRAFT WHERE APPLICABLE MUST REMAIN WITHIN DIMENSIONS	MM ONLY DRAWN BY DATE MWLF 2014/08/01 CHECKED BY DATE MPOFF 2014/08/01 APPROVED BY DATE SMILLER 2014/08/15	4:1	METRIC
MATERIAL NO. SEE TABLE SIZE D	THIS DRAWING CONTAINS INFORMATION THAT IS PROPRIETARY TO MOLEX INCORPORATED AND SHOULD NOT BE USED WITHOUT WRITTEN PERMISSION		SHEET NO. 3 OF 6			



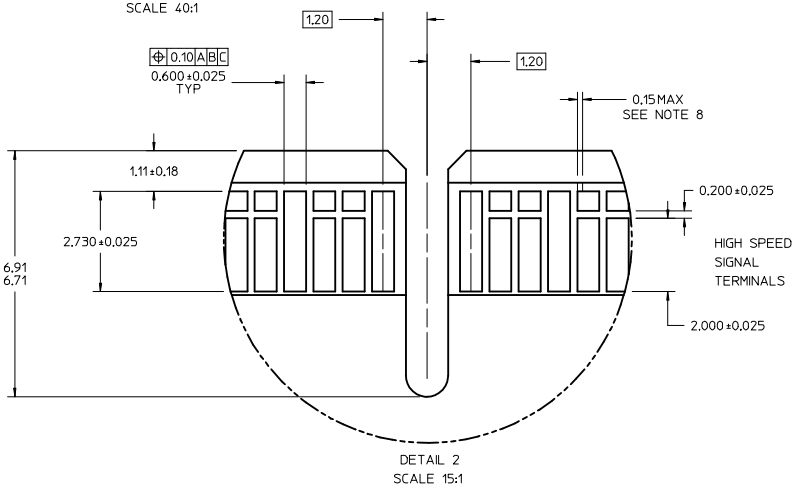
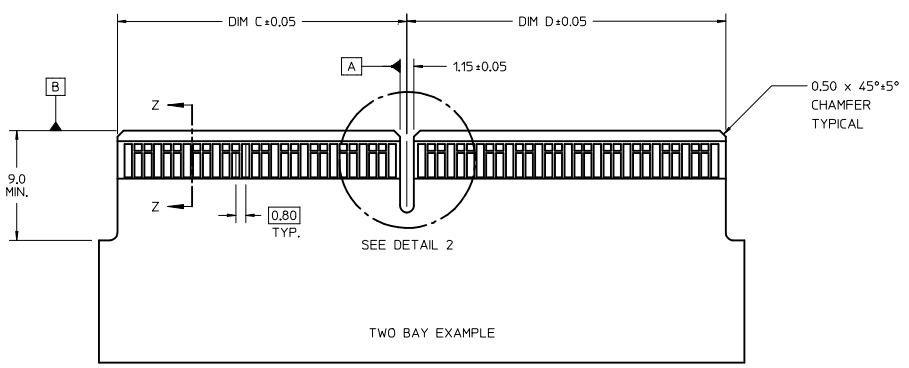
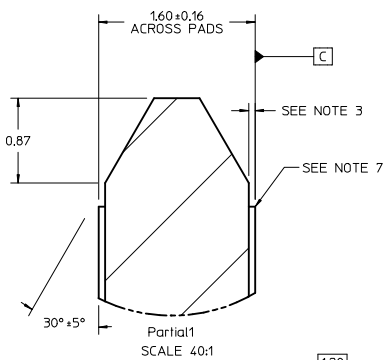
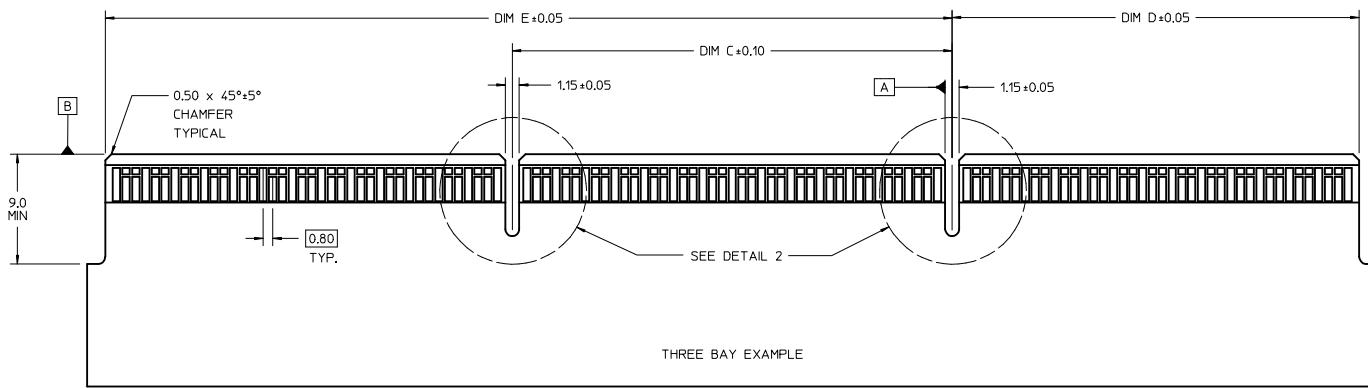
**KEEP OUT ZONES  
COMPONENT SIDE**

**NOTE:**  
1. KEEP-OUT ZONES INDICATE THE PART OF THE CONNECTOR THAT MAY COME IN CONTACT WITH THE PCB. IT IS RECOMMENDED TO ROUTE TRACES AWAY FROM THESE AREAS.

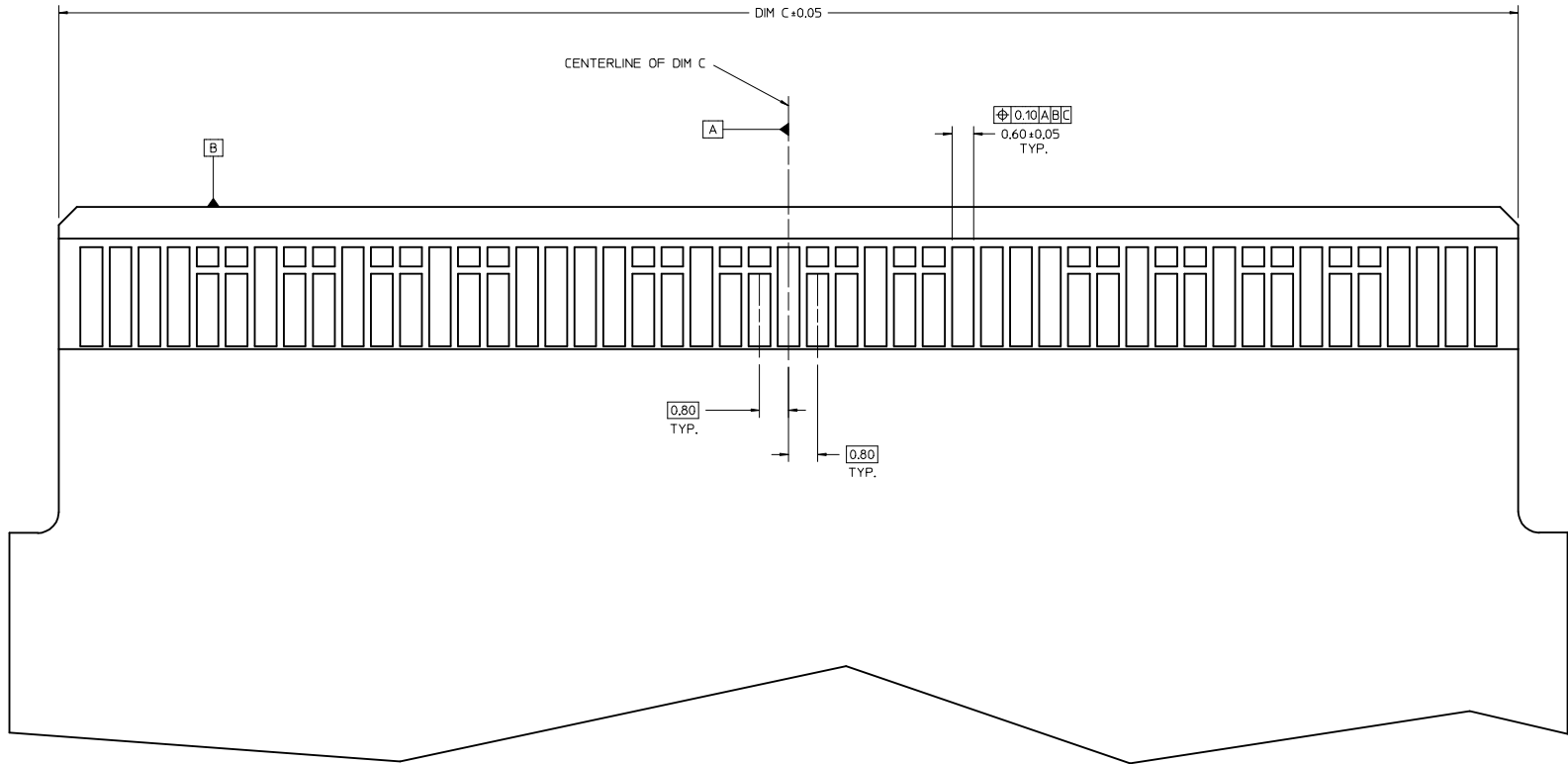
<b>SEE SHEET 1</b> IEC NO: UCP2015-3035 DRAWN BY: DRWNSVANG01 CHKD: MWOLFE APPR: SMILLER	DATE: 2015/01/28 DATE: 2015/01/28 DATE: 2015/02/02	DESCRIPTION:	GENERAL TOLERANCES (UNLESS SPECIFIED): DIMENSION STYLE: <b>MM ONLY</b> SCALE: <b>6:1</b> DESIGN UNITS: <b>METRIC</b> THIRD ANGLE PROJECTION	DRAWN BY: MWOLFE DATE: 2014/08/01 CHECKED BY: MPOFF DATE: 2014/08/01 APPROVED BY: SMILLER DATE: 2014/08/15	TITLE: <b>.062 COPLANAR SALES DRAWING</b>
	MATERIAL NO.: DOCUMENT NO.: <b>SD-172066-001</b>	SHEET NO.: <b>4 OF 6</b>	THIS DRAWING CONTAINS INFORMATION THAT IS PROPRIETARY TO MOLEX INCORPORATED AND SHOULD NOT BE USED WITHOUT WRITTEN PERMISSION		
	QUALITY SYMBOLS: ∇=0 ∇=0 ∇=0		ANGULAR ±1/2° DRAFT WHERE APPLICABLE MUST REMAIN WITHIN DIMENSIONS		

NOTE:

- CONNECTOR LAND CONDITIONS SHALL MEET THE MOST CURRENT REVISION OF PCB SPECIFICATION IPC-6012C-2010 SECTION 3.5.4.4.
- DIMENSIONS APPLY TO LANDS ON BOTH SIDES OF THE BOARD.
- THE THICKNESS OF THE OUTER METAL LAYERS, INCLUDING FOIL, COPPER PLATING, AND THE PROTECTIVE SURFACE FINISH, SHALL BE 0.066mm MAX.
- CHAMFER ROUGHNESS NOT TO EXCEED 3.17 MICROMETERS.
- CHAMFER PROCESS SHALL NOT DAMAGE THE GOLD EDGE LANDS.
- EDGE CARD CHAMFER NOT TO GO THRU GOLD LANDS.
- 0.03mm MAX PLATING OVERHANG ON ALL GOLD LAND EDGES.
- MOLEX RECOMMENDS NO TIE-BARS ON THE LEADING EDGE OF THE GOLD LAND. IF TIE-BARS ARE USED, THEY SHALL BE PLACED TO ONE SIDE OF THE GOLD LAND. APPLIES TO ALL GOLD LANDS.



SEE SHEET 1 EC NO: UCP2015-3035 DRWNSVANG01 2015/01/28 CHKO:MWLF 2015/01/28 APPR:SMILLER 2015/02/02	QUALITY SYMBOLS	GENERAL TOLERANCES (UNLESS SPECIFIED)	DIMENSION STYLE	SCALE	DESIGN UNITS	THIRD ANGLE PROJECTION
	∇=0 ∇=0 ∇=5	4 PLACES ±---   ±--- 3 PLACES ±---   ±--- 2 PLACES ±0.13   ±--- 1 PLACE ±0.25   ±--- 0 PLACE ±---   ±---	mm   INCH ANGULAR ±1/2° DRAFT WHERE APPLICABLE MUST REMAIN WITHIN DIMENSIONS	MM ONLY DRAWN BY DATE MWLF 2014/08/01 CHECKED BY DATE MPOFF 2014/08/01 APPROVED BY DATE SMILLER 2014/08/15	4:1	METRIC
			SHEET NO. 5 OF 6		molex THIS DRAWING CONTAINS INFORMATION THAT IS PROPRIETARY TO MOLEX INCORPORATED AND SHOULD NOT BE USED WITHOUT WRITTEN PERMISSION	



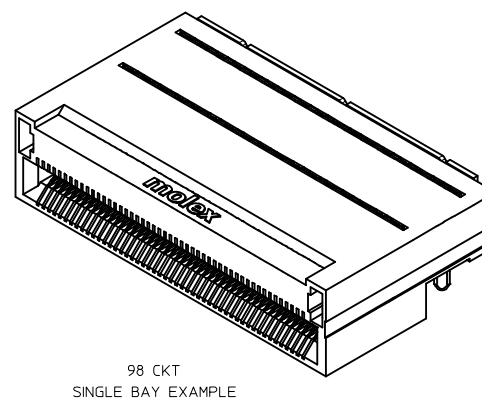
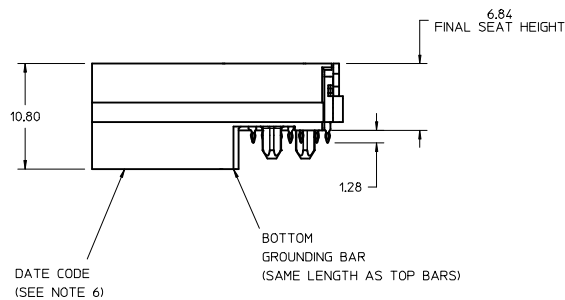
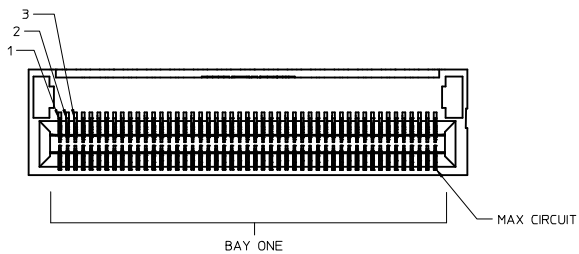
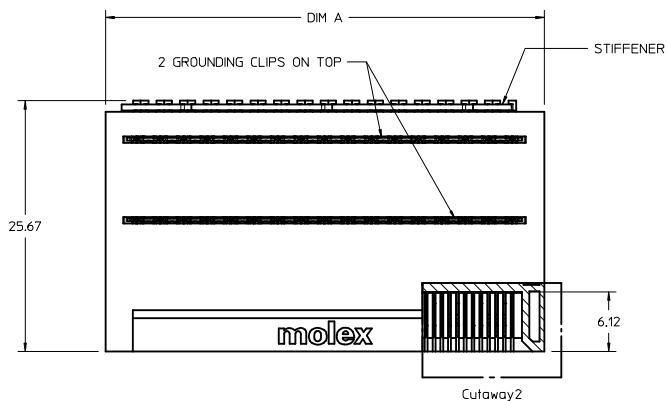
ONE BAY EXAMPLE  
SEE ADDITIONAL DIMENSIONS AND NOTES ON SHEET 5

<b>SEE SHEET 1</b> IEC NO: UCP2015-3035 DRAWN BY: CHYK WOLFE CHECKED BY: MPOFF APPR: SMILLER DATE: 2015/01/28 DATE: 2015/01/28 DATE: 2015/02/02	QUALITY SYMBOLS	GENERAL TOLERANCES (UNLESS SPECIFIED)	DIMENSION STYLE	SCALE	DESIGN UNITS	THIRD ANGLE PROJECTION
	▽=0	4 PLACES ± mm	MM ONLY	15:1	METRIC	☉
	▽=0	3 PLACES ± 0.13				
	▽=0	2 PLACES ± 0.25				
		ANGULAR ±1/2°				
		DRAFT WHERE APPLICABLE MUST REMAIN WITHIN DIMENSIONS				
			MATERIAL NO.	DOCUMENT NO.		
			SEE TABLE	SD-172066-001		
						SHEET NO. 6 OF 6

.062 COPLANAR SALES DRAWING

**molex**

THIS DRAWING CONTAINS INFORMATION THAT IS PROPRIETARY TO MOLEX INCORPORATED AND SHOULD NOT BE USED WITHOUT WRITTEN PERMISSION



98 CKT  
SINGLE BAY EXAMPLE

172066-\*\*\*

NUMBER OF CIRCUITS  
PLATING:  
0 = 0.38 MICROMETERS (15 MICRONS) GOLD  
9 = 0.76 MICROMETERS (30 MICRONS) GOLD

- 1 = 3 GROUND CLIPS / GROUND WAFERS NOT SINGULATED
- 2 = 3 GROUND CLIPS / GROUND WAFERS SINGULATED
- 3 = 2 CLIPS ON TOP / GROUND WAFERS NOT SINGULATED
- 5 = 2 CLIPS ON TOP / GROUND WAFERS SINGULATED
- 6 = NO GROUND CLIPS / GROUND WAFERS NOT SINGULATED
- 7 = NO GROUND CLIPS / GROUND WAFERS SINGULATED

NOTES:

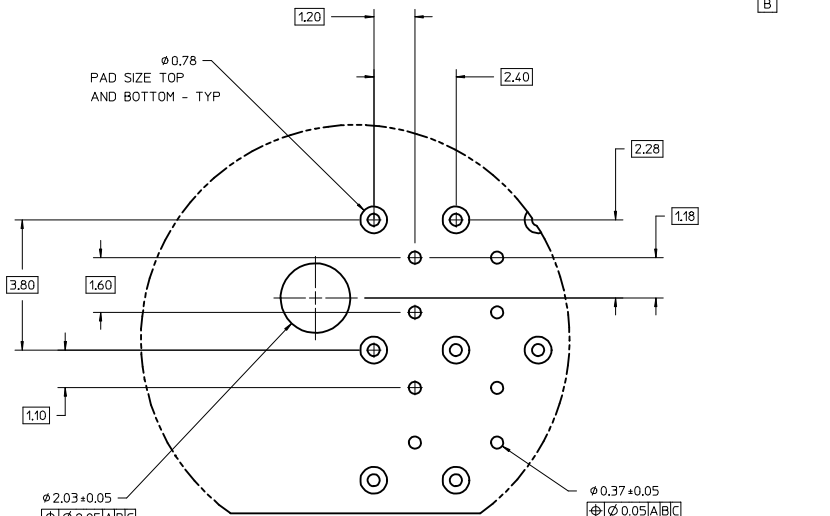
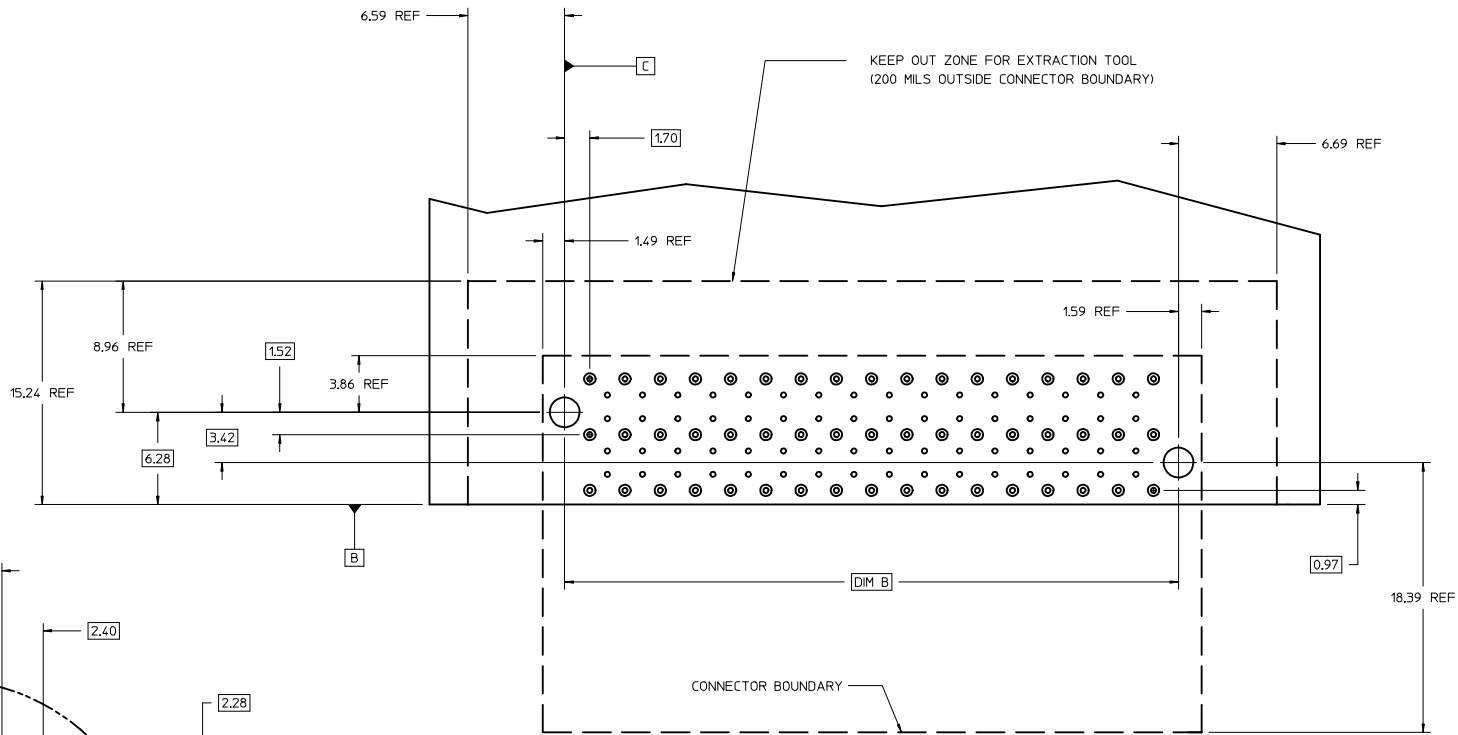
1. MATERIAL -  
CONNECTOR HOUSING: GLASS FILLED LCP, 94V-0, BLACK  
OVERMOLDING ON TERMINALS: GLASS FILLED LCP, 94V-0, BLACK  
TERMINALS: COPPPER ALLOY, SPRING TEMPER  
GROUNDING BAR: COPPER ALLOY  
STIFFENER: 400 SERIES STAINLESS
2. TERMINAL FINISH (LEAD-FREE)  
CONTACT AREA: 0.384mm OR 0.764mm HARD GOLD OVER 3.84mm MIN NICKEL,  
COMPLIANT PIN AREA: .075-1.504mm MATTE TIN OVER 1.254mm MIN. NICKEL.
3. REFER TO PRODUCT SPEC, PS-170305-0001 FOR ALL ELECTRICAL, MECHANICAL AND ENVIROMENTAL SPECIFICATIONS.
4. REFER TO PK-170305-0001 FOR ALL PACKAGING SPECIFICATIONS.
5. REFER TO AS-170305-0001 FOR ALL APPLICATION INFORMATION.
6. REFER TO AS-170305-0002 FOR ROUTING GUIDE RECOMMENDATIONS.
7. DATE CODE AND ASSEMBLY PART NUMBER TO BE LASER ETCHED OR ON LABEL LOCATED ON THE BOTTOM OF THE PART. DATE CODE TO BE IN THE FORMAT OF, DAY OF THE YEAR AND LAST DIGIT OF THE YEAR, (DDDDYY).

PART NUMBER	CIRCUITS	TOOLED	BAY	DIM A	BAY ONE	BAY TWO	BAY THREE	DIM B	DIM C	DIM D	DIM E
172066-**50	50	NO	SINGLE	25.69	50 CIRCUITS	N/A	N/A	22.60	21.00	N/A	N/A
172066-**62	62	NO	SINGLE	30.49	62 CIRCUITS	N/A	N/A	27.40	25.80	N/A	N/A
172066-**80	80	NO	SINGLE	37.69	80 CIRCUITS	N/A	N/A	34.60	33.00	N/A	N/A
172066-**98	98	YES	SINGLE	44.89	98 CIRCUITS	N/A	N/A	41.80	40.20	N/A	N/A
172066-**18	118	NO	DOUBLE	54.49	56 CIRCUITS	62 CIRCUITS	N/A	51.40	23.70	26.10	N/A
172066-**54	154	NO	DOUBLE	68.89	74 CIRCUITS	80 CIRCUITS	N/A	65.80	30.90	33.30	N/A
172066-**74	174	NO	TRIPLE	78.49	56 CIRCUITS	62 CIRCUITS	56 CIRCUITS	75.40	26.40	23.70	50.10
172066-**16	216	NO	TRIPLE	95.29	70 CIRCUITS	76 CIRCUITS	70 CIRCUITS	92.20	32.00	29.30	61.30
172066-**46	246	NO	TRIPLE	107.29	80 CIRCUITS	86 CIRCUITS	80 CIRCUITS	104.20	36.00	33.30	69.30

<b>REV. PCB 0 G. 10 SHT 4</b> EC NO: UCP2015-3035 D: DORNSVANG01 2015/01/28 CHYKMWOLF 2015/01/28 APPROX MILLER 2015/02/02 DESCRIPTION	QUALITY SYMBOLS	GENERAL TOLERANCES (UNLESS SPECIFIED)	DIMENSION STYLE	SCALE	DESIGN UNITS	THIRD ANGLE PROJECTION	
	$\nabla=0$ $\nabla=0$ $\nabla=0$	mm INCH 4 PLACES ±---+--- 3 PLACES ±---+--- 2 PLACES ±0.13+--- 1 PLACE ±0.25+--- 0 PLACE ±---+---	MM ONLY	4:1	METRIC	DRAWN BY DATE MWOLFE 2014/08/01 CHECKED BY DATE MPOFF 2014/08/01 APPROVED BY DATE SMILLER 2014/08/15	TITLE .062 COPLANAR SALES DRAWING
	ANGULAR ±1/2° DRAFT WHERE APPLICABLE MUST REMAIN WITHIN DIMENSIONS	MATERIAL NO. SEE TABLE	DOCUMENT NO. SD-172066-001	SHEET NO. 1 OF 6			
	THIS DRAWING CONTAINS INFORMATION THAT IS PROPRIETARY TO MOLEX INCORPORATED AND SHOULD NOT BE USED WITHOUT WRITTEN PERMISSION						



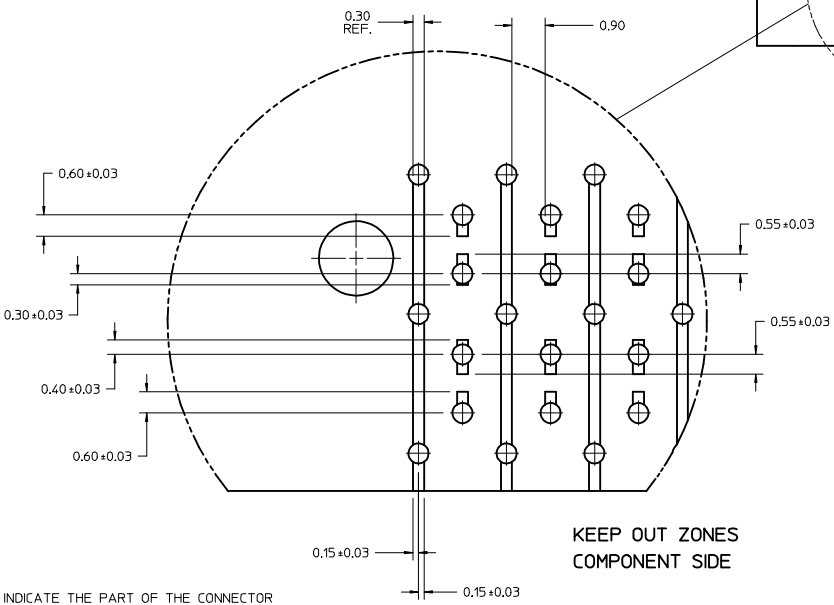
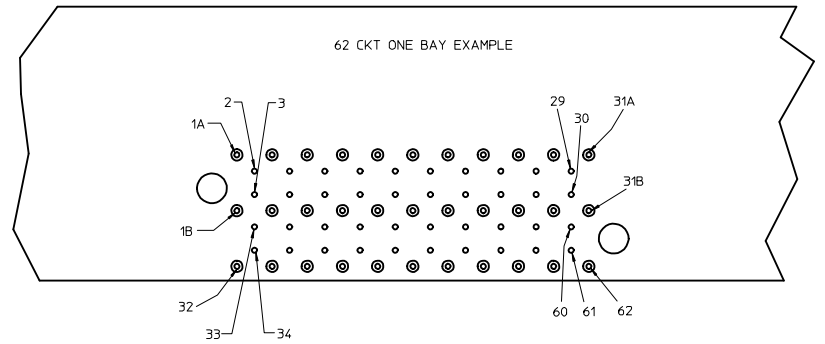
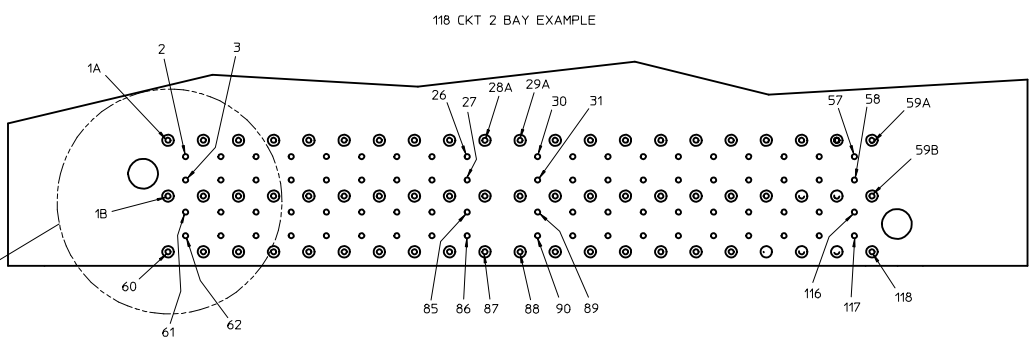
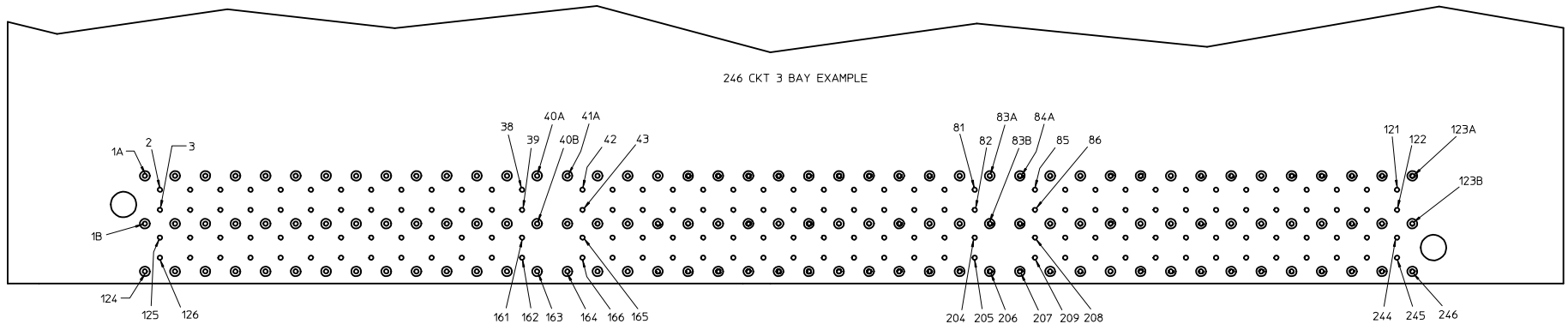




RECOMMENDED TAIL PATTERN  
SEE AS-170305-0002 FOR  
INTERNAL ANTI-PAD SPECIFICATION  
DETAIL 1  
SCALE 14:1

98 CKT  
SINGLE BAY EXAMPLE

SEE SHEET 1 EC NO: UCP2015-3035 DRAWNS/VANG01 2015/01/28 CHKD/MWOLFE 2015/01/28 APPR/S MILLER 2015/02/02	QUALITY SYMBOLS	GENERAL TOLERANCES (UNLESS SPECIFIED)	DIMENSION STYLE	SCALE	DESIGN UNITS	THIRD ANGLE PROJECTION
	∇=0 ∇=0 ∇=0	4 PLACES ±--- ±--- 3 PLACES ±--- ±--- 2 PLACES ±0.13 ±--- 1 PLACE ±0.25 ±--- 0 PLACE ±--- ±---	mm INCH ANGULAR ±1/2° DRAFT WHERE APPLICABLE MUST REMAIN WITHIN DIMENSIONS	MM ONLY DRAWN BY DATE MWOLFE 2014/08/01 CHECKED BY DATE MPOFF 2014/08/01 APPROVED BY DATE MILLER 2014/08/15	4:1	METRIC
MATERIAL NO. SEE TABLE SIZE D	THIS DRAWING CONTAINS INFORMATION THAT IS PROPRIETARY TO MOLEX INCORPORATED AND SHOULD NOT BE USED WITHOUT WRITTEN PERMISSION		SHEET NO. 3 OF 6			



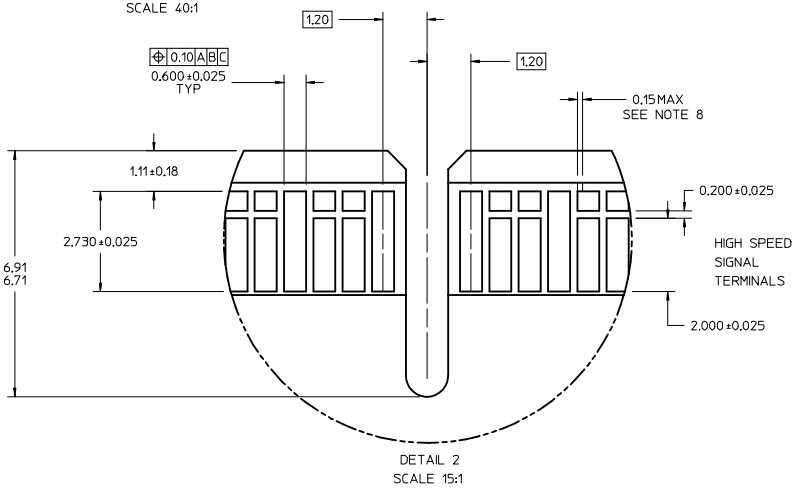
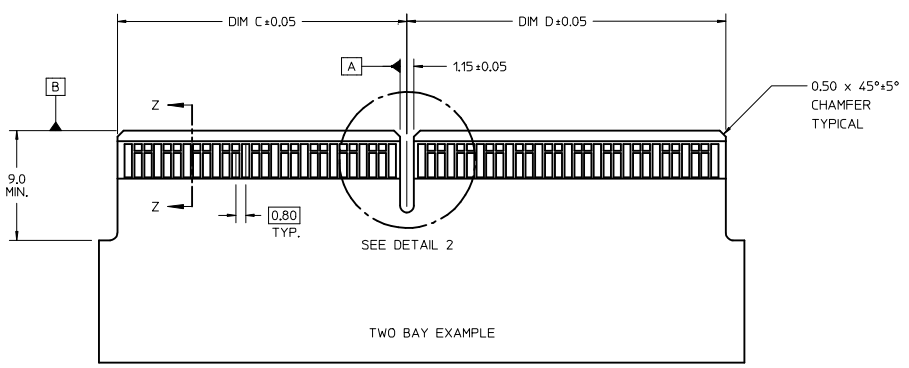
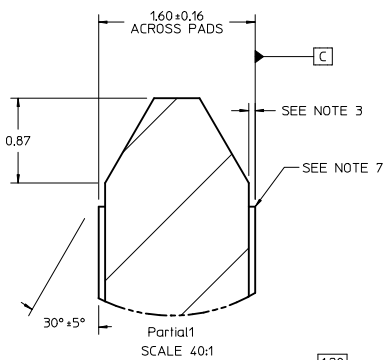
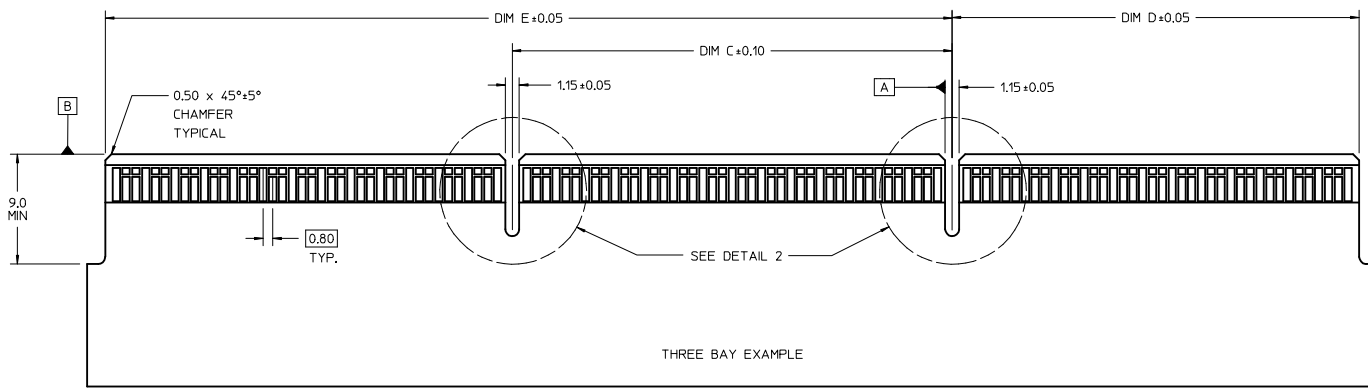
KEEP OUT ZONES  
COMPONENT SIDE

NOTE:  
1. KEEP-OUT ZONES INDICATE THE PART OF THE CONNECTOR THAT MAY COME IN CONTACT WITH THE PCB. IT IS RECOMMENDED TO ROUTE TRACES AWAY FROM THESE AREAS.

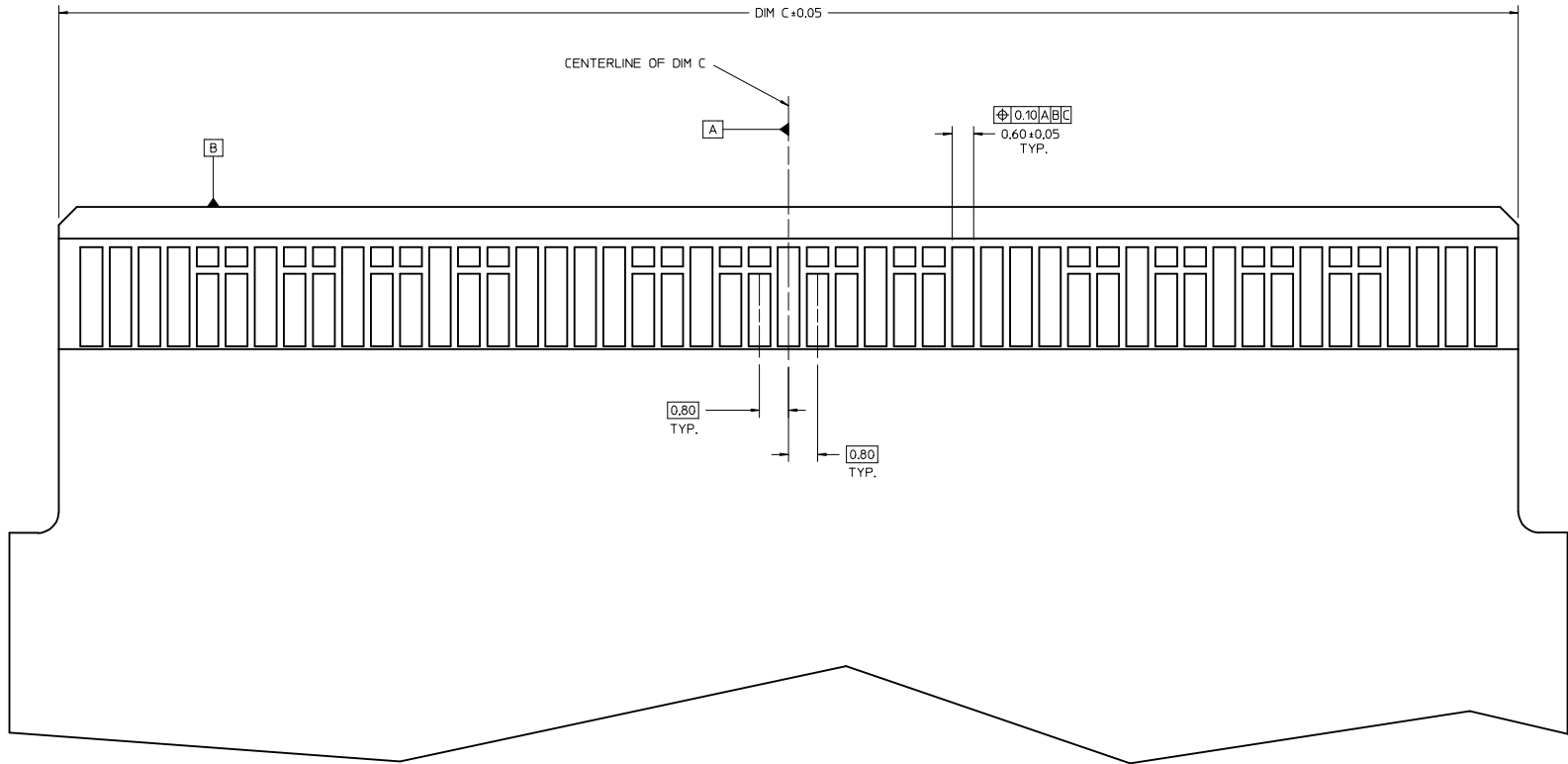
SEE SHEET 1 EC NO: UCP2015-3035 DRAWNS: WANG01 2015/01/28 CHKD: WOLFE 2015/01/28 APPR: SMILLER 2015/02/02	QUALITY SYMBOLS ▽=0 ▽=0 ▽=0	GENERAL TOLERANCES (UNLESS SPECIFIED) DIMENSION STYLE <b>MM ONLY</b> SCALE <b>6:1</b> DESIGN UNITS <b>METRIC</b> THIRD ANGLE PROJECTION	DRAWN BY WOLFE DATE 2014/08/01 CHECKED BY YPOFF DATE 2014/08/01 APPROVED BY SMILLER DATE 2014/08/15	TITLE <b>.062 COPLANAR SALES DRAWING</b> MATERIAL NO. <b>SEE TABLE</b> DOCUMENT NO. <b>SD-172066-001</b>	SHEET NO. <b>4 OF 6</b>
	ANGULAR ±1/2° DRAFT WHERE APPLICABLE MUST REMAIN WITHIN DIMENSIONS	THIS DRAWING CONTAINS INFORMATION THAT IS PROPRIETARY TO MOLEX INCORPORATED AND SHOULD NOT BE USED WITHOUT WRITTEN PERMISSION			

NOTE:

- CONNECTOR LAND CONDITIONS SHALL MEET THE MOST CURRENT REVISION OF PCB SPECIFICATION IPC-6012C-2010 SECTION 3.5.4.4.
- DIMENSIONS APPLY TO LANDS ON BOTH SIDES OF THE BOARD.
- THE THICKNESS OF THE OUTER METAL LAYERS, INCLUDING FOIL, COPPER PLATING, AND THE PROTECTIVE SURFACE FINISH, SHALL BE 0.066mm MAX.
- CHAMFER ROUGHNESS NOT TO EXCEED 3.17 MICROMETERS.
- CHAMFER PROCESS SHALL NOT DAMAGE THE GOLD EDGE LANDS.
- EDGE CARD CHAMFER NOT TO GO THRU GOLD LANDS.
- 0.03mm MAX PLATING OVERHANG ON ALL GOLD LAND EDGES.
- MOLEX RECOMMENDS NO TIE-BARS ON THE LEADING EDGE OF THE GOLD LAND. IF TIE-BARS ARE USED, THEY SHALL BE PLACED TO ONE SIDE OF THE GOLD LAND. APPLIES TO ALL GOLD LANDS.



SEE SHEET 1 EC NO: UCP2015-3035 DRWNSVANG01 2015/01/28 CHKO:MWLF 2015/01/28 APPR:SMILLER 2015/02/02	QUALITY SYMBOLS	GENERAL TOLERANCES (UNLESS SPECIFIED)	DIMENSION STYLE	SCALE	DESIGN UNITS	THIRD ANGLE PROJECTION
	∇=0 ∇=0 ∇=5	4 PLACES ±---   ±--- 3 PLACES ±---   ±--- 2 PLACES ±0.13   ±--- 1 PLACE ±0.25   ±--- 0 PLACE ±---   ±---	mm   INCH ANGULAR ±1/2° DRAFT WHERE APPLICABLE MUST REMAIN WITHIN DIMENSIONS	MM ONLY DRAWN BY DATE MWLF 2014/08/01 CHECKED BY DATE MPOFF 2014/08/01 APPROVED BY DATE SMILLER 2014/08/15	4:1	METRIC
			MATERIAL NO.	DOCUMENT NO.		SHEET NO.
			SEE TABLE	SD-172066-001		5 OF 6
THIS DRAWING CONTAINS INFORMATION THAT IS PROPRIETARY TO MOLEX INCORPORATED AND SHOULD NOT BE USED WITHOUT WRITTEN PERMISSION						



ONE BAY EXAMPLE  
SEE ADDITIONAL DIMENSIONS AND NOTES ON SHEET 5

<b>SEE SHEET 1</b> IEC NO: UCP2015-3035 DRAWN BY: CHYK WOLFE CHECKED BY: MPOFF APPR: SMILLER	<b>QUALITY SYMBOLS</b> ▽=0 ▽=0 ▽=0		<b>GENERAL TOLERANCES (UNLESS SPECIFIED)</b> <table border="1"> <thead> <tr> <th></th> <th>mm</th> <th>INCH</th> </tr> </thead> <tbody> <tr> <td>4 PLACES</td> <td>±---</td> <td>±---</td> </tr> <tr> <td>3 PLACES</td> <td>±---</td> <td>±---</td> </tr> <tr> <td>2 PLACES</td> <td>±0.13</td> <td>±---</td> </tr> <tr> <td>1 PLACE</td> <td>±0.25</td> <td>±---</td> </tr> <tr> <td>0 PLACE</td> <td>±---</td> <td>±---</td> </tr> </tbody> </table>			mm	INCH	4 PLACES	±---	±---	3 PLACES	±---	±---	2 PLACES	±0.13	±---	1 PLACE	±0.25	±---	0 PLACE	±---	±---	<b>DIMENSION STYLE</b> <b>MM ONLY</b>		SCALE <b>15:1</b>	DESIGN UNITS <b>METRIC</b>	THIRD ANGLE PROJECTION
		mm	INCH																								
	4 PLACES	±---	±---																								
	3 PLACES	±---	±---																								
2 PLACES	±0.13	±---																									
1 PLACE	±0.25	±---																									
0 PLACE	±---	±---																									
MATERIAL NO.			DATE		DATE		TITLE																				
DRAFT WHERE APPLICABLE MUST REMAIN WITHIN DIMENSIONS			ANGULAR ±1/2°		DATE		.062 COPLANAR SALES DRAWING																				
SIZE D			SEE TABLE		DATE		<b>molex</b> DOCUMENT NO. SD-172066-001																				

SHEET NO. 6 OF 6