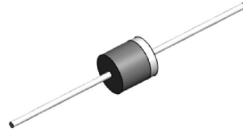


# 6KPE

## Automotive grade 6600 W Transient voltage suppressor



### Product features

- Automotive grade (AEC-Q101 qualified)
- Excellent clamping capability
- High reliability application
- 6600 W peak pulse power capability at 10/1000  $\mu$ s waveform
- Typical  $I_R$  less than 5  $\mu$ A
- Fast response time: typically less than 1.0 ps from 0 V to  $V_{BR}$  minimum
- Plastic package meets UL 94 V-0 flammability rating
- Terminal: tin plated, solderable per J-STD-002
- UL 497B recognized.  
File No. : E198449 Guide QVGQ2

### Applications

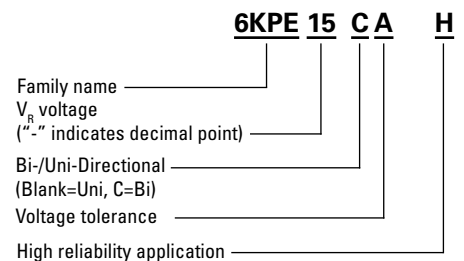
- Automotive chassis and safety systems
- Advanced driver assistance systems (ADAS)
- Communication and infotainment systems
- Network systems and body electronics
- Power Train controls
- xEV and battery systems

### Environmental compliance and general specifications

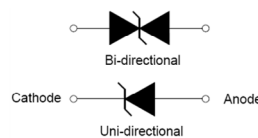
- ISO16750-2 P5A: 12 V system (87 V/1  $\Omega$ /400 ms)
- ISO16750-2 P5A: 24 V system (174 V/4  $\Omega$ /350 ms)
- AEC-Q101 qualified



### Ordering part number



### PIN configuration



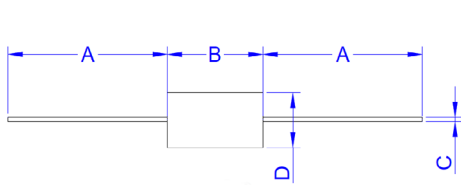
### Absolute maximum ratings

(+25 °C, RH=45%-75%, unless otherwise noted)

Parameter	Symbol	Value	Unit
Storage operating junction temperature range	$T_{STG}/T_J$	-55 to +175	°C
Steady state power dissipation at $T_L = +75$ °C	$P_{M(AV)}$	8.0	W
Peak pulse power dissipation on 10/1000 $\mu$ s waveform	$P_{PP}$	6600	W
Maximum instantaneous forward voltage at 100 A for unidirectional	$V_F$	3.5	V
Peak forward surge current, 8.3 ms single half sine wave <sup>1</sup>	$I_{FSM}$	600	A
Typical thermal resistance junction to lead	$R_{\theta JL}$	8.0	°C/W
Typical thermal resistance junction to ambient	$R_{\theta JA}$	40	°C/W

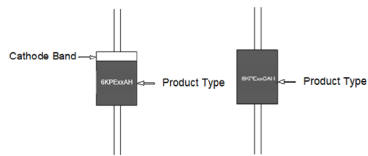
1. Measured on 8.3 ms single half sine wave or equivalent square wave for unidirectional device only, duty cycle = 4 per minute maximum

### Mechanical parameters, pad layout- mm/inches



Dimension	Millimeters		Inches	
	Minimum	Maximum	Minimum	Maximum
A	25.40	-	1.000	-
B	8.60	9.40	0.339	0.370
C	1.20	1.40	0.047	0.055
D	8.60	9.10	0.339	0.358

### Part marking



### Packaging information

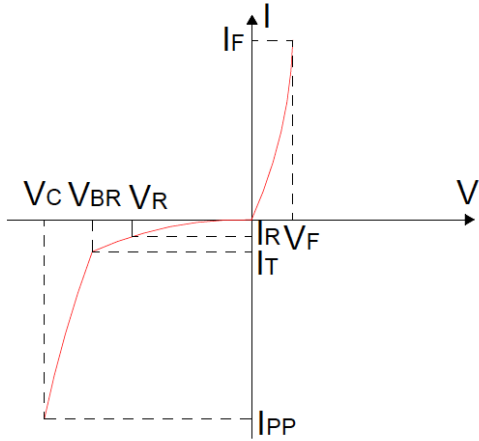
300 parts per box

Electrical specifications (+25 °C)

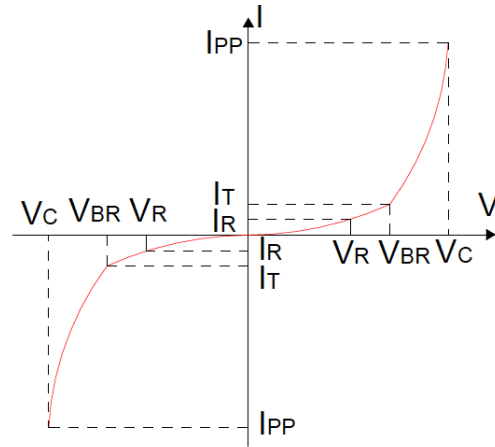
Part number		Marking		$V_R$	$I_R @ V_R$	$V_{BR} @ I_T$		$I_T$	$V_C @ I_{PP}$	$I_{PP}$	UL497B recognized
Uni-polar	Bi-polar	Uni	Bi	(V)	( $\mu$ A)	min (V)	max (V)	(mA)	max (V)	(A)	
6KPE15AH	6KPE15CAH	6KPE15AH	6KPE15CAH	15	5	16.7	18.5	5	24.4	270.5	
6KPE16AH	6KPE16CAH	6KPE16AH	6KPE16CAH	16	5	17.8	19.7	5	26	253.8	
6KPE18AH	6KPE18CAH	6KPE18AH	6KPE18CAH	18	5	20	22.1	5	29.2	226	
6KPE20AH	6KPE20CAH	6KPE20AH	6KPE20CAH	20	5	22.2	24.5	5	32.4	203.7	x
6KPE22AH	6KPE22CAH	6KPE22AH	6KPE22CAH	22	5	24.4	26.9	5	35.5	186	x
6KPE24AH	6KPE24CAH	6KPE24AH	6KPE24CAH	24	5	26.7	29.5	5	38.9	169.7	x
6KPE26AH	6KPE26CAH	6KPE26AH	6KPE26CAH	26	5	28.9	31.9	5	42.1	156.8	x
6KPE28AH	6KPE28CAH	6KPE28AH	6KPE28CAH	28	5	31.1	34.4	5	45.4	145.4	x
6KPE30AH	6KPE30CAH	6KPE30AH	6KPE30CAH	30	5	33.3	36.8	5	48.4	136.4	x
6KPE33AH	6KPE33CAH	6KPE33AH	6KPE33CAH	33	5	36.7	40.6	5	53.3	123.8	x
6KPE36AH	6KPE36CAH	6KPE36AH	6KPE36CAH	36	5	40	44.2	5	58.1	113.6	x
6KPE40AH	6KPE40CAH	6KPE40AH	6KPE40CAH	40	5	44.4	49.1	5	64.5	102.3	x
6KPE43AH	6KPE43CAH	6KPE43AH	6KPE43CAH	43	5	47.8	52.8	5	69.4	95.1	x

**Ratings and V-I characteristic curves** (+25 °C unless otherwise noted)

**V- I curve characteristics (Uni-directional)**



**V- I curve characteristics (Bi-directional)**



Surge waveform: 10/1000  $\mu$ s

$V_R$ : Stand-off voltage – Maximum voltage that can be applied

$V_{BR}$ : Breakdown voltage

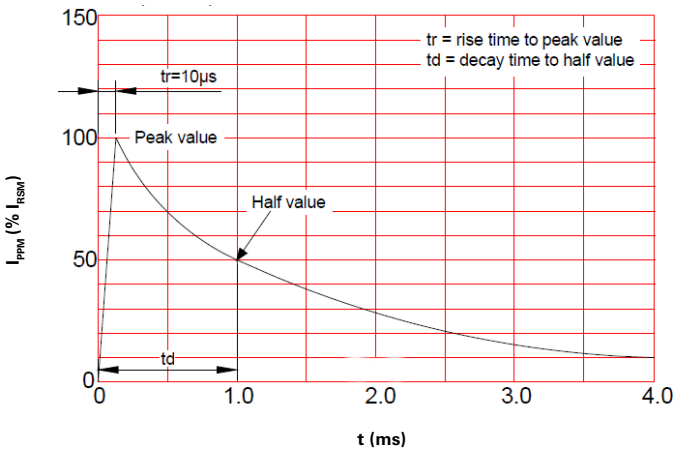
$V_C$ : Clamping voltage – Peak voltage measured across the suppressor at a specified  $I_{PP}$

$I_R$ : Reverse leakage current

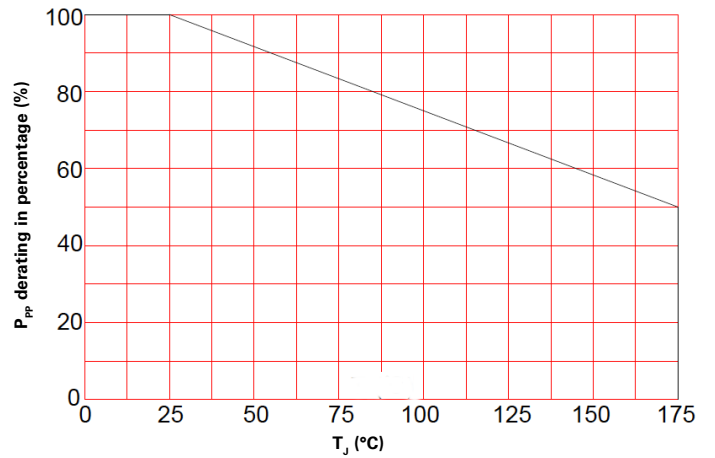
$I_T$ : Test current

$V_F$ : Forward voltage drop for Uni-directional

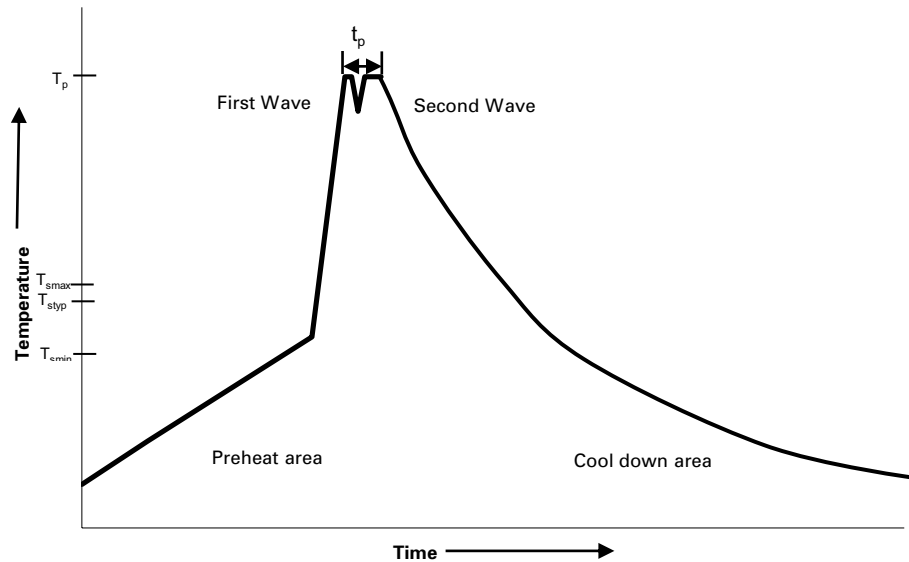
**Pulse waveform**



**Pulse derating curve**



**Wave solder profile**



**Reference EN 61760-1:2006**

Profile feature	Standard SnPb solder	Lead (Pb) free solder
Preheat		
• Temperature min. ( $T_{smin}$ )	100 °C	100 °C
• Temperature typ. ( $T_{styp}$ )	120 °C	120 °C
• Temperature max. ( $T_{smax}$ )	130 °C	130 °C
• Time ( $T_{smin}$ to $T_{smax}$ ) ( $t_s$ )	70 seconds	70 seconds
$\Delta$ preheat to max Temperature	150 °C max.	150 °C max.
Peak temperature ( $T_p$ )*	235 °C – 260 °C	250 °C – 260 °C
Time at peak temperature ( $t_p$ )	10 seconds max 5 seconds max each wave	10 seconds max 5 seconds max each wave
Ramp-down rate	~ 2 K/s min ~3.5 K/s typ ~5 K/s max	~ 2 K/s min ~3.5 K/s typ ~5 K/s max
Time 25 °C to 25 °C	4 minutes	4 minutes

**Manual solder**

+350 °C (4-5 seconds by soldering iron), generally manual/hand soldering is not recommended

Life Support Policy: Eaton does not authorize the use of any of its products for use in life support devices or systems without the express written approval of an officer of the Company. Life support systems are devices which support or sustain life, and whose failure to perform, when properly used in accordance with instructions for use provided in the labeling, can be reasonably expected to result in significant injury to the user.

Eaton reserves the right, without notice, to change design or construction of any products and to discontinue or limit distribution of any products. Eaton also reserves the right to change or update, without notice, any technical information contained in this bulletin.

**Eaton**  
**Electronics Division**  
1000 Eaton Boulevard  
Cleveland, OH 44122  
United States  
Eaton.com/electronics

© 2021 Eaton  
All Rights Reserved  
Printed in USA  
Publication No. ELX1057 BU-ELX21057  
June 2021

Eaton is a registered trademark.

All other trademarks are property of their respective owners.

Follow us on social media to get the latest product and support information.

