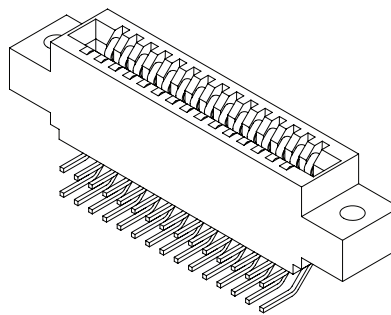




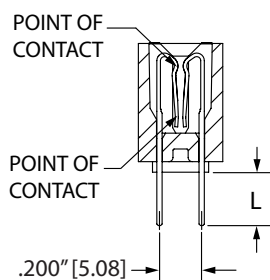
.100" [2.54 mm] Contact Centers, .560" [14.22 mm] Profile, .400" [10.16 mm] Wide Body, Double Point Contact, Dip Solder/Wire Wrap/Right Angle/Card Extender

SPECIFICATIONS

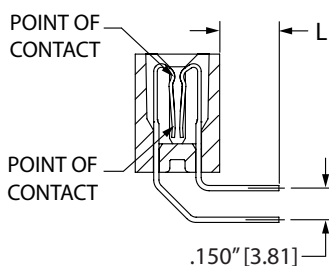
- Accommodates .062" ± .008" [1.57 mm ± 0.20 mm] PC board
- PPS, PBT or PA9T insulator
- 3 Amps current rating for one contact energized
- 30 milli Ohms maximum at rated current
- UL Flammability Rating: 94V-0



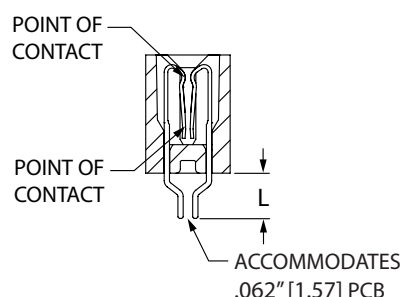
TERMINATION TYPE



DIP SOLDER/WIRE WRAP
(PD, PF, PS, PM)



RIGHT ANGLE
(PB, PG, PE, PJ, PU)

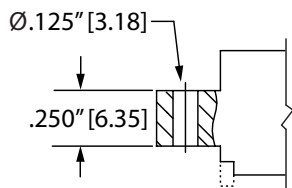


CARD EXTENDER
(PN, PR)

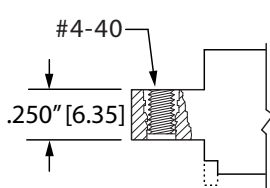
| TERMINATION | TERMINATION TYPE | * POST LENGTH L ±.025" [0.64] | FITS MIN. HOLE SIZE | STANDOFF |
|-------------|------------------|-------------------------------|---------------------|----------|
| PD | DIP SOLDER | .160" [4.06] | .043" [1.09] | YES |
| PS | DIP SOLDER | .190" [4.83] | .043" [1.09] | YES |
| PF | DIP SOLDER | .270" [6.86] | .043" [1.09] | YES |
| PM | WIRE WRAP | .560" [14.22] | .043" [1.09] | YES |
| PB | RIGHT ANGLE | .100" [2.54] | .043" [1.09] | NO |
| PG | RIGHT ANGLE | .140" [3.56] | .043" [1.09] | NO |
| PE | RIGHT ANGLE | .180" [4.57] | .043" [1.09] | NO |
| PU | RIGHT ANGLE | .250" [6.35] | .043" [1.09] | NO |
| PJ | RIGHT ANGLE | .500" [12.70] | .043" [1.09] | NO |
| PR | CARD EXTENDER | .225" [5.73] | N/A | NO |
| PN | CARD EXTENDER | .595" [15.12] | N/A | NO |

* OTHER POST LENGTHS AVAILABLE, CONTACT FACTORY.

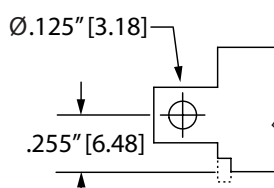
MOUNTING STYLE (Standoffs included on straight terminations only.)



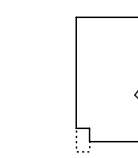
CLEARANCE HOLE
(H)



THREADED INSERT
(I)



SIDE MOUNTING
(S)



NO MOUNTING EARS
(N)



.100" [2.54 mm] Contact Centers, .560" [14.22 mm] Profile, .400" [10.16 mm] Wide Body, Double Point Contact, Dip Solder/Wire Wrap/Right Angle/Card Extender

PART NUMBER OPTIONS

MATERIALS (INSULATOR/CONTACT)

- E = PBT/Phosphor Bronze
- R = PPS/Phosphor Bronze
- G = PA9T/Phosphor Bronze
- H = PBT/Beryllium Copper
- A = PPS/Beryllium Copper
- J = PA9T/Beryllium Copper

(Consult factory for other materials.)
Refer to Page 7 for Operating/Processing Temperatures

CONTACT FINISH - RoHS Compliant

All platings are Lead Free and have .000050" Nickel underplate

- | Contact Surface | Termination |
|-------------------|--------------------------|
| B = .000010" Gold | .000100" Pure Tin, Matte |
| C = .000030" Gold | .000100" Pure Tin, Matte |

CONTACT CENTERS

- C = .100" [2.54 mm]

NUMBER OF CONTACT POSITIONS

See Chart Below

E B C 10 D PD H - Sxxx

MODIFICATION CODE (Consult Factory)
OMIT FOR STANDARD

MOUNTING STYLE (Opposite Page)

- H = Clearance Holes
- I = Threaded Inserts
- S = Side Mounting
- N = No Mounting

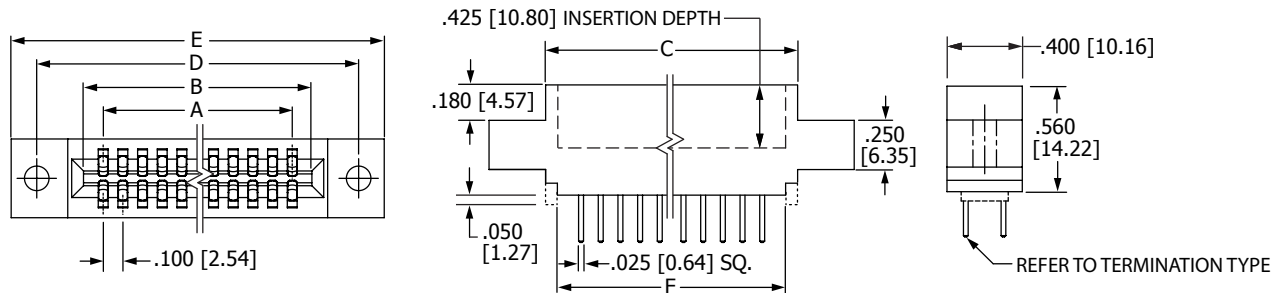
TERMINATION TYPE (Opposite Page)

- PD, PF, PS = .025" [0.64 mm] Square Dip Solder
- PM = .025" [0.64 mm] Square Wire Wrap
- PB, PG, PE, PJ, PU = .025" [0.64 mm] Square Right Angle
- PN, PR = .025" [0.64 mm] Square Card Extender

READOUT (Opposite Page)

- D = Dual

DIMENSIONS Dimensions in [] are in millimeters, all others are in inches.



Tolerances on non-critical dimensions may vary slightly due to shrinkage differential per insulator material; Consult factory.

| POSITIONS/ CONTACTS | INCHES | | | | | | MILLIMETERS | | | | | |
|------------------------|--------|--------|--------|--------|--------|--------|-------------|--------|--------|--------|--------|--------|
| | A±.008 | B±.008 | C±.015 | D±.010 | E±.020 | F±.015 | A±0.20 | B±0.20 | C±0.38 | D±0.25 | E±0.51 | F±0.38 |
| 06/12 | 0.500 | 0.700 | 0.860 | 1.175 | 1.435 | 0.740 | 12.70 | 17.78 | 21.84 | 29.85 | 36.45 | 18.80 |
| 07/14* | 0.600 | 0.800 | 0.960 | 1.275 | 1.535 | 0.840 | 15.24 | 20.32 | 24.38 | 32.39 | 38.99 | 21.34 |
| 08/16 | 0.700 | 0.900 | 1.060 | 1.375 | 1.635 | 0.940 | 17.78 | 22.86 | 26.92 | 34.93 | 41.53 | 23.88 |
| 10/20 | 0.900 | 1.100 | 1.260 | 1.575 | 1.835 | 1.140 | 22.86 | 27.94 | 32.00 | 40.01 | 46.61 | 28.96 |
| 12/24* | 1.100 | 1.300 | 1.460 | 1.775 | 2.035 | 1.340 | 27.94 | 33.02 | 37.08 | 45.09 | 51.69 | 34.04 |
| 13/26* | 1.200 | 1.400 | 1.560 | 1.875 | 2.135 | 1.440 | 30.48 | 35.56 | 39.62 | 47.63 | 54.23 | 36.58 |
| 15/30 | 1.400 | 1.600 | 1.760 | 2.075 | 2.335 | 1.640 | 35.56 | 40.64 | 44.70 | 52.71 | 59.31 | 41.66 |
| 17/34* | 1.600 | 1.800 | 1.960 | 2.275 | 2.535 | 1.840 | 40.64 | 45.72 | 49.78 | 57.79 | 64.39 | 46.74 |
| 18/36* | 1.700 | 1.900 | 2.060 | 2.375 | 2.635 | 1.940 | 43.18 | 48.26 | 52.32 | 60.33 | 66.93 | 49.28 |
| 20/40 | 1.900 | 2.100 | 2.260 | 2.575 | 2.835 | 2.140 | 48.26 | 53.34 | 57.40 | 65.41 | 72.01 | 54.36 |
| 22/44* | 2.100 | 2.300 | 2.460 | 2.775 | 3.035 | 2.340 | 53.34 | 58.42 | 62.48 | 70.49 | 77.09 | 59.44 |
| 24/48* | 2.300 | 2.500 | 2.660 | 2.975 | 3.235 | 2.540 | 58.42 | 63.50 | 67.56 | 75.57 | 82.17 | 64.52 |
| 25/50* | 2.400 | 2.600 | 2.760 | 3.075 | 3.335 | 2.640 | 60.96 | 66.04 | 70.10 | 78.11 | 84.71 | 67.06 |
| 28/56* | 2.700 | 2.900 | 3.060 | 3.375 | 3.635 | 2.940 | 68.58 | 73.66 | 77.72 | 85.73 | 92.33 | 74.68 |
| 30/60 | 2.900 | 3.100 | 3.260 | 3.575 | 3.835 | 3.140 | 73.66 | 78.74 | 82.80 | 90.81 | 97.41 | 79.76 |
| 31/62* | 3.000 | 3.200 | 3.360 | 3.675 | 3.935 | 3.240 | 76.20 | 81.28 | 85.34 | 93.35 | 99.95 | 82.30 |
| 35/70* | 3.400 | 3.600 | 3.760 | 4.075 | 4.335 | 3.640 | 86.36 | 91.44 | 95.50 | 103.51 | 110.11 | 92.46 |
| 36/72* | 3.500 | 3.700 | 3.860 | 4.175 | 4.435 | 3.740 | 88.90 | 93.98 | 98.04 | 106.05 | 112.65 | 95.00 |
| 40/80 | 3.900 | 4.100 | 4.260 | 4.575 | 4.835 | 4.140 | 99.06 | 104.14 | 108.20 | 116.21 | 122.81 | 105.16 |
| 43/86 | 4.200 | 4.400 | 4.560 | 4.875 | 5.135 | 4.440 | 106.68 | 111.76 | 115.82 | 123.83 | 130.43 | 112.78 |
| 44/88 | 4.300 | 4.500 | 4.660 | 4.975 | 5.235 | 4.540 | 109.22 | 114.30 | 118.36 | 126.37 | 132.97 | 115.32 |
| 49/98* | 4.800 | 5.000 | 5.160 | 5.475 | 5.735 | 5.040 | 121.92 | 127.00 | 131.06 | 139.07 | 145.67 | 128.02 |
| 50/100 | 4.900 | 5.100 | 5.260 | 5.575 | 5.835 | 5.140 | 124.46 | 129.54 | 133.60 | 141.61 | 148.21 | 130.56 |
| 55/110* | 5.400 | 5.600 | 5.760 | 6.075 | 6.335 | 5.640 | 137.16 | 142.24 | 146.30 | 154.31 | 160.91 | 143.26 |
| 60/120* | 5.900 | 6.100 | 6.260 | 6.575 | 6.835 | 6.140 | 149.86 | 154.94 | 159.00 | 167.01 | 173.61 | 155.96 |
| 61/122* | 6.000 | 6.200 | 6.360 | 6.675 | 6.935 | 6.240 | 152.40 | 157.48 | 161.54 | 169.55 | 176.15 | 158.50 |
| 65/130* | 6.400 | 6.600 | 6.760 | 7.075 | 7.335 | 6.640 | 162.56 | 167.64 | 171.70 | 179.71 | 186.31 | 168.66 |
| 70/140* | 6.900 | 7.100 | 7.260 | 7.575 | 7.835 | 7.140 | 175.26 | 180.34 | 184.40 | 192.41 | 199.01 | 181.36 |

* Consult factory for availability.