

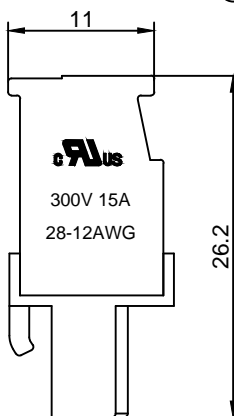
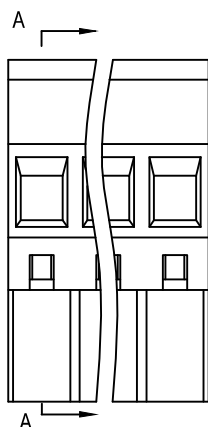
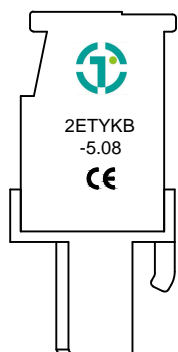
**Material :**

- ① Cover : PA66(UL94V-0)
- ② Contact : Phosphor Bronze
- ③ Cage : Brass , Ni Plated
- ④ Housing : PA66(UL94V-0)
- ⑤ Screws : Steel , Cr<sup>3+</sup>Zn Plated

**Electrical :**

- 1.Rated Voltage : 300V UL IEC
- 2.Rated Current : 15A 320V 10A
- 3.Torque Value : M2.5 , 3.54Lb.in M2.5 , 0.4N.m
- 4.Wire Range: 28-12AWG 2.5mm<sup>2</sup>
- 5.Stripping Length : 7-8mm
- 6.Withstanding Voltage : AC1600V/1Min.
- 7.Operating Temperature : -40 °C~+105 °C
- 8.RoHS Compliance
- 9.Safety Approval :
- 10.Undimensioned Tolerances:

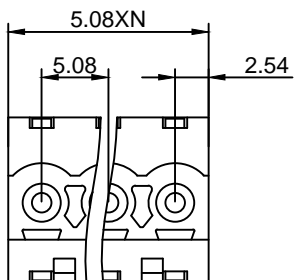
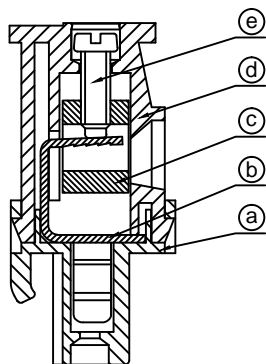
Pitch Range In mm			Nominal Dimension Range In mm				—	∩	∇
≤6	6 ~ 10	10 ~ 24	≤30	30 ~ 60	60 ~ 100	100 ~ 150	>150	0.05/10	
±0.10	±0.15	±0.25	±0.20	±0.30	±0.50	±0.70	±1.00	±0.1°	



2ETYKB - 5.08 -XXP - X X - 100 AH

①                      ②                      ③                      ④                      ⑤                      ⑥                      ⑦

- ① Series NO.
- ② Pitch
- ③ Poles  
02 02Contacts  
03 03Contacts  
...  
24 24Contacts
- ④ 1 Single Pitch  
2 Double Pitch
- ⑤ Color: 1 Grey  
2 Blue  
3 Black  
4 Green(Standard For AH)  
5 Orange  
6 Red  
7 Transparent  
8 Yellow  
9 White
- ⑥ Customer Request: 100--Standard M2.5
- ⑦ AH--Standard(PA66)



DETACHED LISTS	<b>拓宜(上海)工控电器设备有限公司</b>	
	Topone(Shanghai) Industrial Control Electrical Equipment Co., LTD.	
	APPD: 9/16/16'	PART NO. <b>2ETYKB-5.08-XXP-XX-100AH</b>
	CHKD: 9/15/16'	
DRFT: 9/14/16'	DRAWING NO.	REV 1
 THIRD ANGLE PROJECTION		SHEET 1/1
 MM (INCH) DO NOT SCALE DRAWING		SCALE 1/1