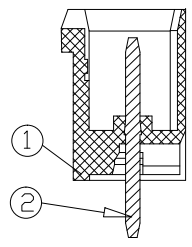
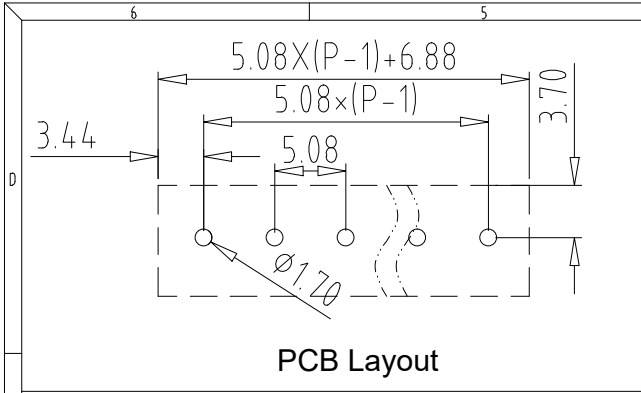


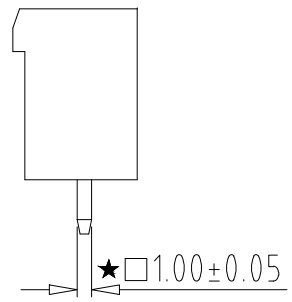
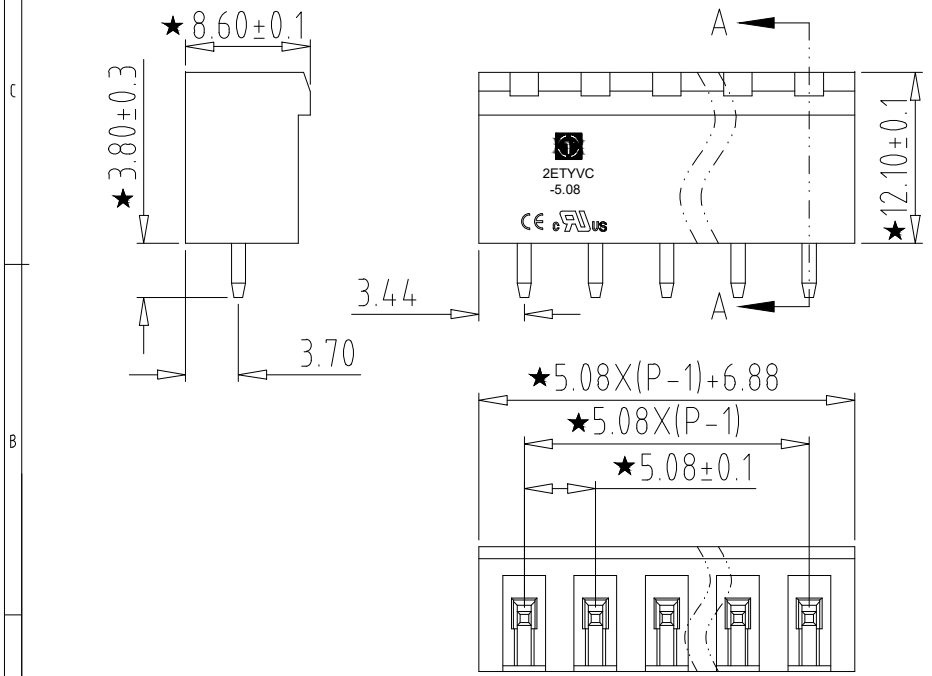
REV	CONTENT	CHK	DATE
V0.0	CONTENT	MYZ	21.07.06



SECTION A-A

Electrical :

- | | | |
|--|---------------|------|
| | UL | IEC |
| 1. Rated Voltage : | 300V | 320V |
| 2. Rated Current : | 15A | 20A |
| 3. Withstanding Voltage : | AC1600V/1Min. | |
| 4. Operating Temperature : | -40°C~+105°C | |
| 5. RoHS Compliance | | |
| 6. Safty Approval : | cULus CE | |
| 7. "★" is the key quality control point. | | |



2ETYVC - 5.08 -XXP - X X - 100AH

- | | | | |
|---|---------------------------------|---|--|
| ① | Series No. | ④ | 1 Single Pitch
2 Double Pitch |
| ② | Pitch | ⑤ | Color: 1 Grey
2 Blue
3 Black
4 Green
5 Orange
6 Red
7 Transparent
8 Yellow
9 White |
| ③ | Poles | | 02 02Contacts
03 03Contacts
...
24 24Contacts |
| ⑥ | Customer Request: 100--Standard | | |

Total Pitch Tolerances in mm										Nominal dimension range in mm										⊥		≡		—		//		
over 0	over 30	over 53	over 70	over 90	over 115	over 150	over 250	over 350	over 500	over 0	over 30	over 53	over 70	over 90	over 115	over 150	over 200	over 250	over 320	over 0	over 10	over 0	over 100	over 0	over 100	over 0	over 150	
±0.18	±0.20	±0.25	±0.3	±0.35	±0.4	±0.60	±0.70	±0.85	±0.20	±0.20	±0.25	±0.30	±0.35	±0.4	±0.44	±0.55	±0.70	±0.80	±0.90	0.2	0.3	0.3	0.2	0.3	0.2	0.3	0.2	0.5

2	PIN	XX	P	BRASS	Tin Plated
1	HOUSING	XX	1	PA66 UL94V-0	SEE NOTE
ITEM	NAME OF PART	NO. OF PART	Q'TY	MATERIAL	NOTE
DWG.	21.07.06	DATE	20.05.11	SIZE	A4 UNITS mm SHEET/OF 1 / 1
CHK.		DATE		SCALE	1:1
APP.		DATE		NAME	2ETYVC-5.08-XXP-XX-100AH
				DWGNO.	XXXX

